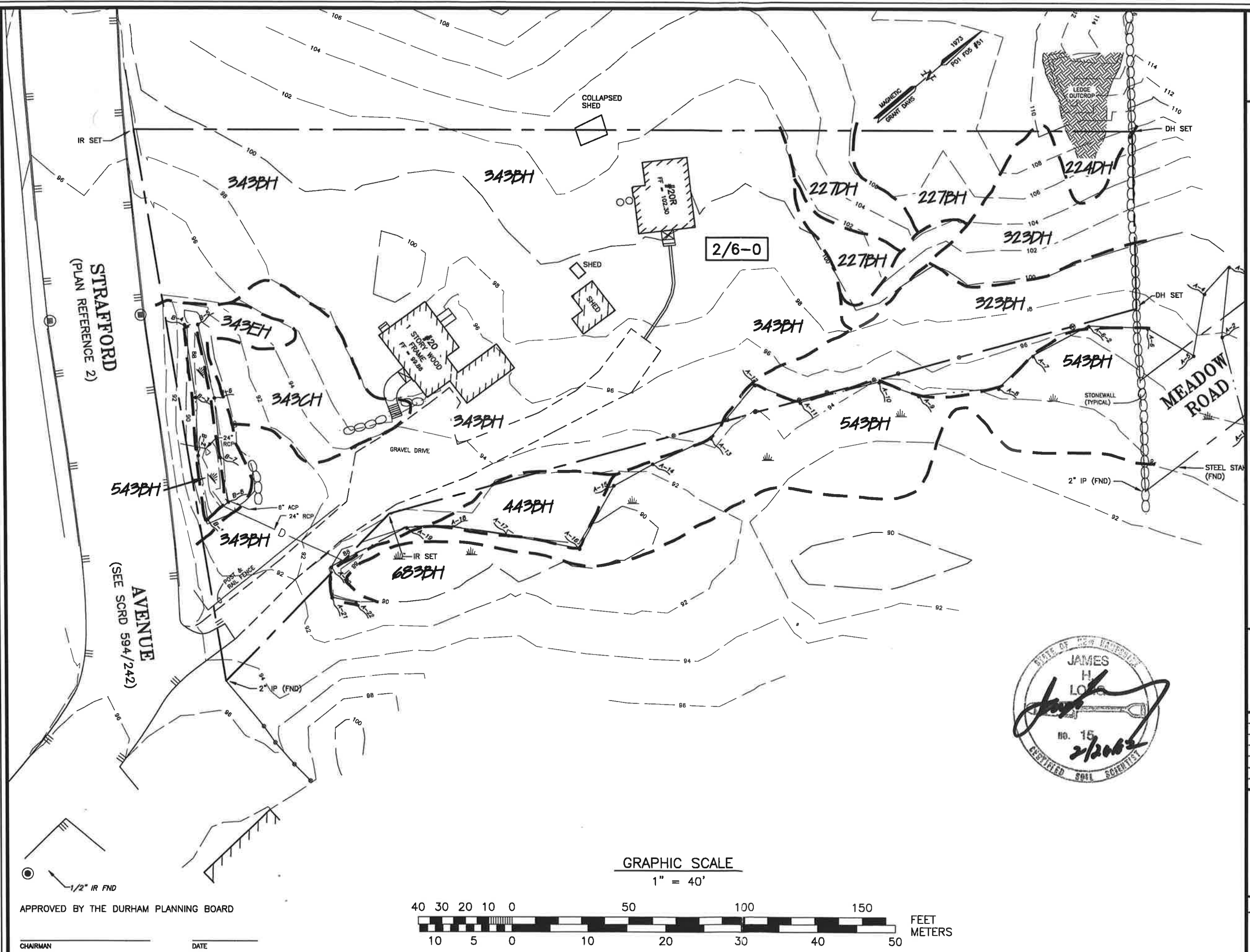



M:\Jobs1\JN1200s\Jn1290s\JN1298\1298Plans\1298WDO1.dwg, H1 - HISS MAP





AMBIT ENGINEERING, INC.
Civil Engineers & Land Surveyors
200 Griffin Road, Unit 3
Portsmouth, N.H. 03801-7114
Tel (603) 430-9282
Fax (603) 436-2315

- NOTES:**
- 1) PARCEL IS SERVED BY MUNICIPAL SEWER AND WATER.
 - 2) THE PURPOSE OF THIS PLAN IS TO SHOW THE HISS MAPPING FOR THE PARCEL.
 - 3) WETLANDS WERE DELINEATED BY JAMES H. LONG CWS ON OCTOBER 20, 2003. FLAGS WERE FIELD LOCATED BY AMBIT ENGINEERING, INC. DELINEATION WAS IN ACCORDANCE WITH THE 1987 CORPS OF ENGINEERS WETLANDS DELINEATION MANUAL AS REQUIRED BY THE DES WETLANDS BUREAU. JURISDICTIONAL WETLANDS WERE IDENTIFIED AND DELINEATED USING THE ROUTINE DETERMINATIONS METHOD AS OUTLINED IN THE MANUAL. THE WETLANDS DELINEATED ON THE ABOVE REFERENCED SITE ALSO MEET THE CRITERION OF POORLY/VERY POORLY DRAINED AS DEFINED IN SSSNE SPECIAL PUBLICATION NO. 1 "HIGH INTENSITY SOIL MAP FOR NEW HAMPSHIRE STANDARDS" DATED SEPTEMBER 2002. WETLAND SOILS ALSO MEET CRITERION III.D.1. AND III.H.1. AS DEFINED IN THE "FIELD INDICATORS FOR HYDRIC SOILS IN NEW ENGLAND, VERSION 2", DATED JULY 1998.
 - 4) UNDERGROUND UTILITY LOCATIONS ARE BASED UPON BEST AVAILABLE EVIDENCE AND ARE NOT FIELD VERIFIED. LOCATING AND PROTECTING ANY ABOVEGROUND OR UNDERGROUND UTILITIES IS THE SOLE RESPONSIBILITY OF THE CONTRACTOR AND/OR THE OWNER. UTILITY CONFLICTS SHOULD BE REPORTED AT ONCE TO THE DESIGN ENGINEER.
 - 5) DATUM IS ASSUMED:

KIMBALL PROPERTY
20 STRAFFORD AVENUE
DURHAM, N.H.

0	ISSUED FOR STAMPING	2/20/07
NO.	DESCRIPTION	DATE
REVISIONS		

SCALE: 1" = 40' FEBRUARY 2007

HISS MAP **H1**