

Town of Durham New Hampshire










2015 Master Plan Update
Figure M-15

Town Trail System


Legend

Trails

-  College Woods
-  Doe Farm
-  Jackson's Landing
-  Packers Falls
-  Wagon Hill
-  Wiswall
-  Adams Point
-  East Foss Farm
-  Longmarsh
-  West Foss Farm

 Town Lands

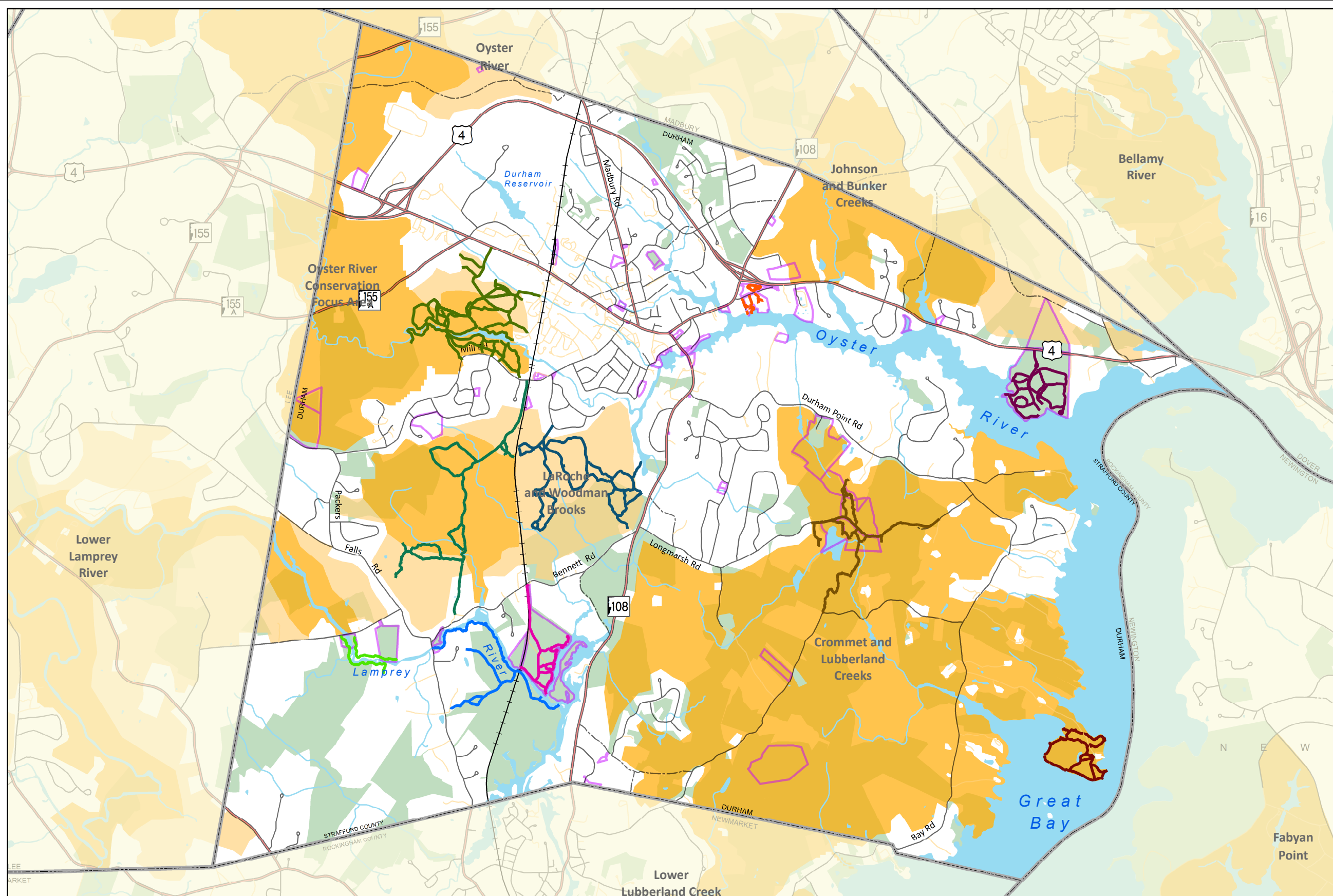
GRANIT Conservation Lands

 Permanent Conservation Land

Conservation Plan Focus Areas

 Core Area

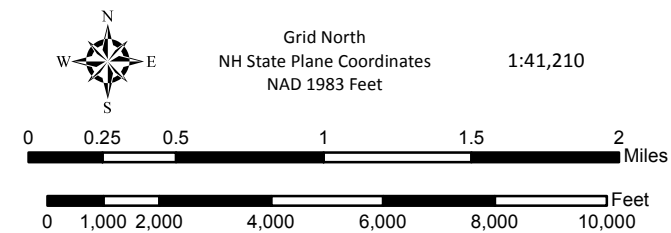
 Supporting Landscape



Data Sources
Base features are from USGS 1:24,000 scale Digital Line Graphs, as archived in the GRANIT database. Digital data in NH GRANIT represent the efforts of the contributing agencies to record information from the cited source materials. Complex Systems Research Center (CSRC), under contract to the Office of Energy & Planning (OEP), and in consultation with cooperating agencies, maintains a continuing program to identify and correct errors in these data. Neither OEP nor CSRC make any claim as to the validity or reliability or to any implied uses of these data.



Conservation Focus Area boundaries obtained from "The Land Conservation Plan for New Hampshire's Coastal Watersheds" (<http://des.nh.gov/organization/commissioner/pip/publications/wd/documents/r-wd-06-43.pdf>)



Prepared by **Strafford Regional Planning Commission**
150 Wakefield St, Suite 12, Rochester, NH 03867
T: (603) 994-3500 F: (603) 994-3504 Em: srpc@strafford.org
Conservation Lands
Date: February 25, 2015
Path: G:\Requests\Members\Durham\MasterPlanMapping_EnvironmentalChapter\MapDocs\ConservationLands_FocusAreas_Map.mxd

Maps prepared by Strafford Regional Planning Commission are for planning purposes only.

