

TOWN OF DURHAM, NEW HAMPSHIRE: CONSERVATION LAND

Legend

Conservation Lands (GRANIT 2016)

- Permanent Conservation Land
- Unofficial Conservation Land
- Developed Public Land
- Unknown

Political Features

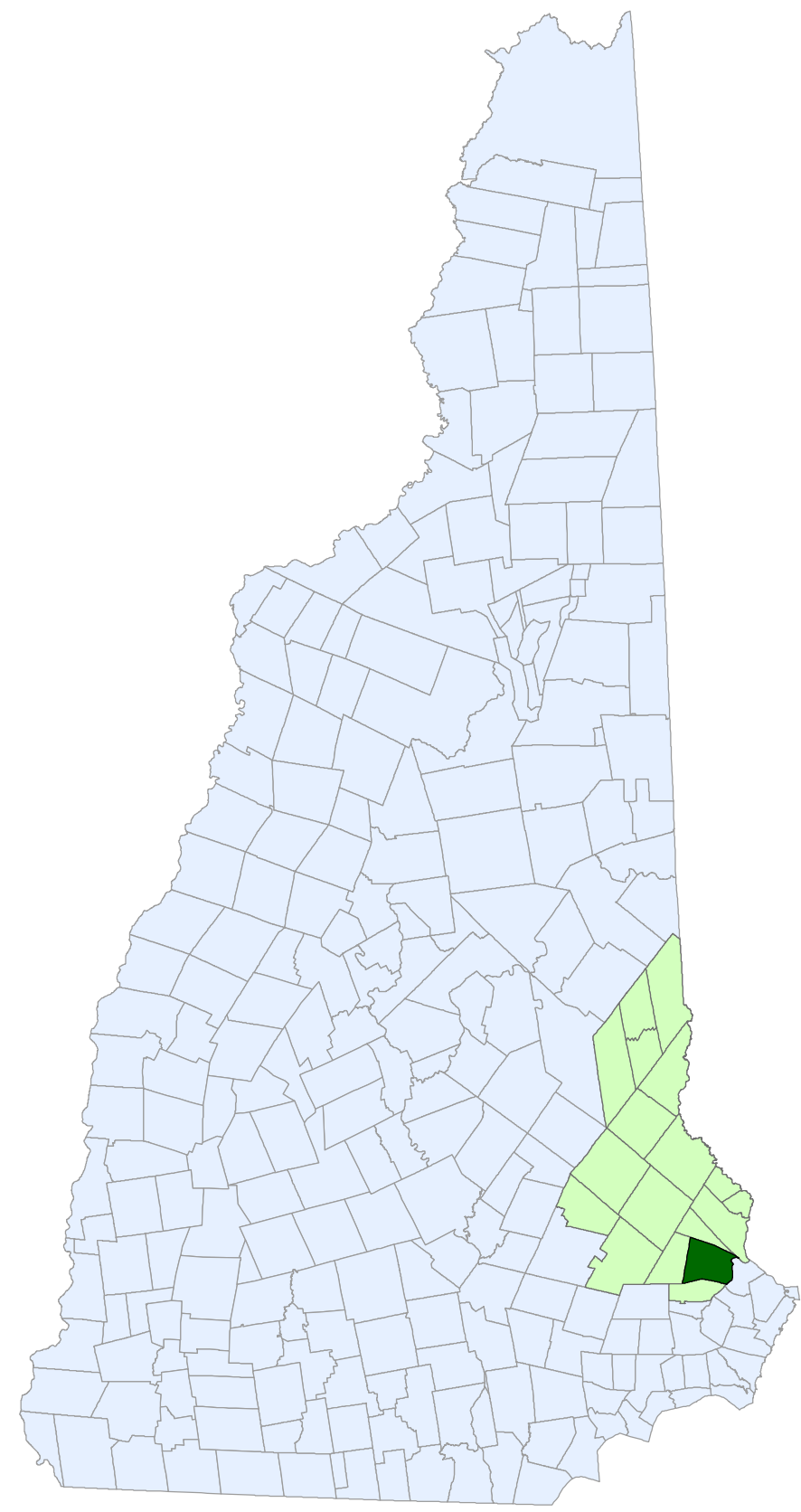
- ▣ SRPC Municipal Boundary
- ▣ NH Municipal Boundary
- ▣ Digital Tax Parcel

Roads (NHDOT)

- State
- Local
- Private
- Not Maintained

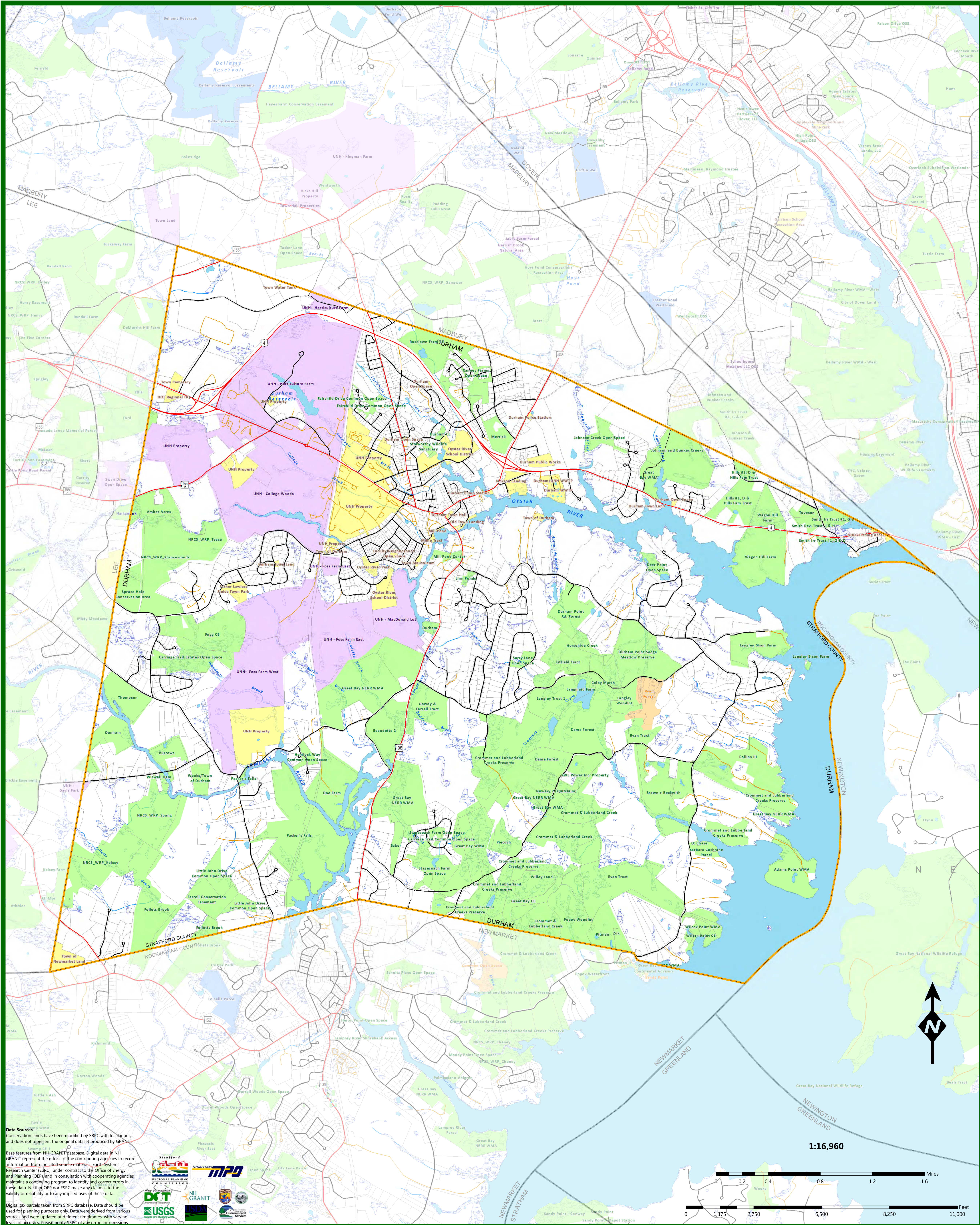
Water Resources (USGS)

- Lake, Pond, River
- Wetlands (NWI)



Map Feature Notes

Permanent Conservation Land is permanently protected from development through legal means, and more than 50% of the total area must remain undeveloped. *Unofficial Conservation Land* is not permanently protected through any legal means and is typically owned by public institutions or agencies whose intent is to maintain the land for conservation, recreation, or education. *Unprotected Water Supply Land* is not permanently protected through legal means and is managed by public drinking water suppliers. *Developed Public Land* includes public land currently with or planned to have over 50% of its area with developed infrastructure, and is not protected by any legal means.



Data Sources
 Conservation lands have been modified by SRPC with local input, and does not represent the original dataset produced by GRANIT.

Base features from NH GRANIT database. Digital data in NH GRANIT represent the efforts of the contributing agencies to record information from the data source materials. Earth-Systems Research Center (ESRC), under contract to the Office of Energy and Planning (OEP), and in consultation with cooperating agencies, maintains a continuing program to identify and correct errors in these data. Neither OEP nor ESRC make any claim as to the validity or reliability or to any implied uses of these data.

Digital tax parcels taken from SRPC database. Data should be used for planning purposes only. Data were derived from various sources and were updated at different timeframes, with varying levels of accuracy. Please notify SRPC of any errors or omissions.

