



SAU #05
Oyster River Cooperative School District
Durham, NH
2022-23 Enrollment Projection Report

Table of Contents

Section	Page
Enrollment Summary.....	1
Historical Enrollment Table.....	2
Historical Enrollment Graph.....	3
Projected Enrollment Table.....	4
Projected Enrollment Graph.....	5
Historical & Projected Enrollment Graph.....	6
Historical & Projected Enrollment in Grade Combinations Line Graph.....	7
Historical & Projected Enrollment in Grade Combinations Stacked Column Graph.....	8
Birth to Kindergarten Graph.....	9
Additional Information	10
New England PK-12 Enrollment Trends.....	11
Reliability and Use of this Document	12

Enrollment Summary

The global pandemic continues to influence our nation's public health and economic stability in unpredictable ways. As such, it is still too early to identify many of the factors that could impact school enrollments. Over the past school year, we have seen fluctuations in the real estate market and job trends, which have impacted student attendance patterns. Moreover, during the past school year, we have seen how school enrollment patterns can differ substantially from one district to another, with some districts losing students while others experience an influx of students.

We are pleased to send you this report displaying the past, present, and projected enrollments for the District. These ten-year projections are designed to provide the District with yearly, up-to-date enrollment information that can be used by boards and administrators for effective planning and allocation of resources. Included in this report are graphs representing historical and projected grade-by-grade enrollments, as well as historical and projected enrollments in grade combinations. We have received the figures given to us by the District, and we assume that the method of collecting the enrollment data has been consistent from year to year.

Enrollment projections are more reliable in Years #1-4 in the future and less reliable in the "out-years." Projections six to ten years out may serve as a guide to future enrollments and are useful for planning purposes. In light of this, NESDEC has added a "Second Semester refresher" enrollment projection at no cost to affiliates. (For more information, please refer to the Reliability and Use of This Document section).

The NESDEC enrollment projection fell within 53 students of the K-12 total, 2,062 students projected vs. 2,115 enrolled.

Births increased by 16 from a previous ten-year average of 86 to a projected average of 102, which could have an impact on Kindergarten enrollments. In most districts, Grades 1-8 are very stable in enrollments. However, there have been increases in 7 of the 8 most recent years, leading to a net increase averaging 30 students per year.

Over the next three years, K-4 enrollments are projected to increase by 122 students, Grades 5-8 enrollments are projected to decrease by -84 students, and Grades 9-12 enrollments are projected to decrease by -4 students, as students move through the grades.

Historical Enrollment

School District: SAU #05, NH

10/20/2022

Historical Enrollment By Grade																			
Birth Year	Births*	School Year	PK	K	1	2	3	4	5	6	7	8	9	10	11	12	UNGR	K-12	PK-12
2007	102	2012-13	0	116	129	144	144	158	166	146	168	171	150	179	166	176	0	2013	2013
2008	92	2013-14	0	99	157	139	152	153	171	175	162	174	184	146	181	165	0	2058	2058
2009	104	2014-15	0	112	130	152	144	159	162	178	176	163	198	184	146	191	0	2095	2095
2010	75	2015-16	24	107	133	131	153	143	162	163	176	173	187	197	181	149	0	2055	2079
2011	78	2016-17	24	116	132	144	141	160	150	167	164	175	210	184	187	185	0	2115	2139
2012	76	2017-18	32	119	135	140	149	152	169	159	169	163	212	209	179	193	0	2148	2180
2013	77	2018-19	24	92	138	147	148	156	159	179	161	170	214	206	207	185	0	2162	2186
2014	70	2019-20	34	120	101	150	149	151	162	159	183	161	210	217	205	205	0	2173	2207
2015	91	2020-21	0	101	112	106	148	147	152	161	160	185	210	204	218	207	0	2111	2111
2016	94	2021-22	32	128	104	125	112	145	153	160	159	158	223	211	202	226	0	2106	2138
2017	86	2022-23	0	127	132	118	126	122	153	166	161	164	207	227	207	205	0	2115	2115

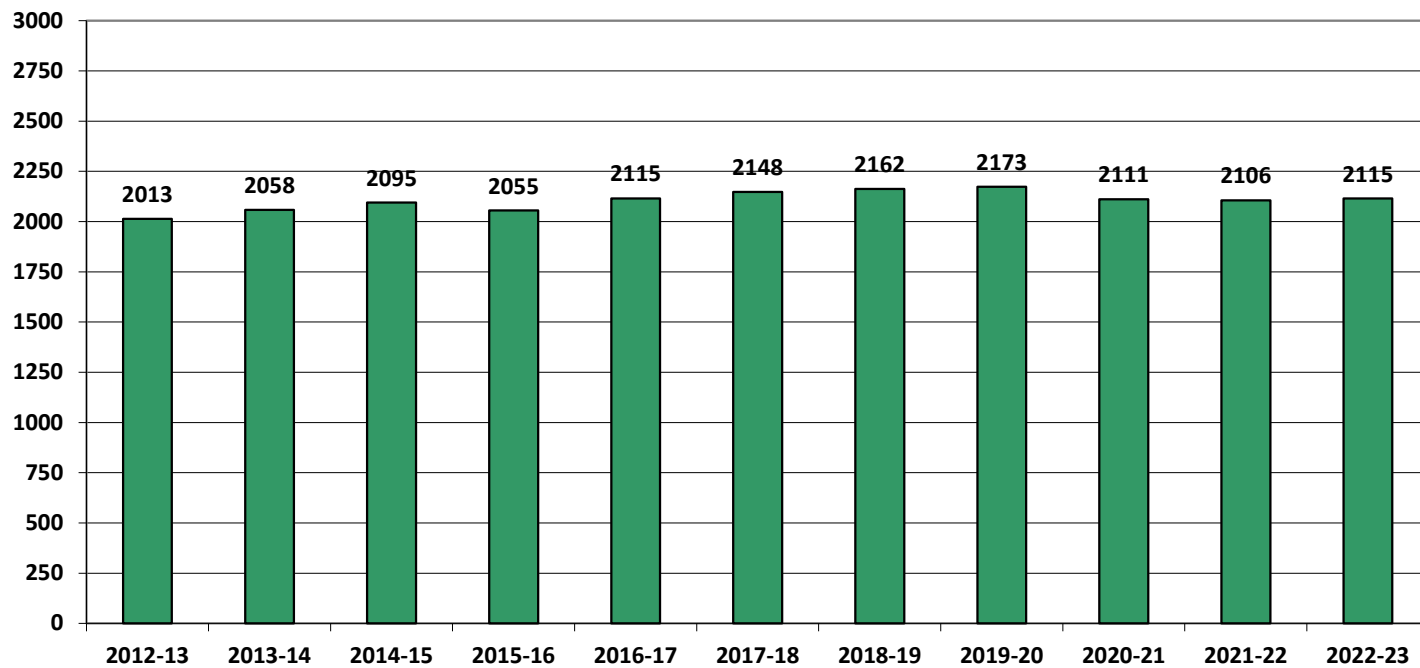
*Birth data provided by Public Health Vital Records Departments in each state.

Historical Enrollment in Grade Combinations									
Year	PK-4	K-4	K-6	K-8	5-8	6-8	7-8	7-12	9-12
2012-13	691	691	1003	1342	651	485	339	1010	671
2013-14	700	700	1046	1382	682	511	336	1012	676
2014-15	697	697	1037	1376	679	517	339	1058	719
2015-16	691	667	992	1341	674	512	349	1063	714
2016-17	717	693	1010	1349	656	506	339	1105	766
2017-18	727	695	1023	1355	660	491	332	1125	793
2018-19	705	681	1019	1350	669	510	331	1143	812
2019-20	705	671	992	1336	665	503	344	1181	837
2020-21	614	614	927	1272	658	506	345	1184	839
2021-22	646	614	927	1244	630	477	317	1179	862
2022-23	625	625	944	1269	644	491	325	1171	846

Historical Percentage Changes			
Year	K-12	Diff.	%
2012-13	2013	0	0.0%
2013-14	2058	45	2.2%
2014-15	2095	37	1.8%
2015-16	2055	-40	-1.9%
2016-17	2115	60	2.9%
2017-18	2148	33	1.6%
2018-19	2162	14	0.7%
2019-20	2173	11	0.5%
2020-21	2111	-62	-2.9%
2021-22	2106	-5	-0.2%
2022-23	2115	9	0.4%
Change		102	5.1%

Historical Enrollment

K-12, School Years 2012-13 to 2022-23



Projected Enrollment

School District: SAU #05, NH

10/20/2022

Enrollment Projections by Grade*																				
Birth Year	Births*		School Year	PK	K	1	2	3	4	5	6	7	8	9	10	11	12	UNGR	K-12	PK-12
2017	86		2022-23	32	127	132	118	126	122	153	166	161	164	207	227	207	205	0	2115	2147
2018	90		2023-24	32	126	130	145	120	128	126	160	167	163	209	208	225	211	0	2118	2150
2019	107		2024-25	32	150	129	143	147	122	132	132	161	169	208	210	206	230	0	2139	2171
2020	112		2025-26	32	157	153	142	145	150	126	138	133	163	215	209	208	210	0	2149	2181
2021	105		2026-27	34	147	160	168	144	148	155	132	139	134	208	216	207	212	0	2170	2204
2022	100	(est.)	2027-28	34	140	150	176	171	147	153	162	133	140	171	209	214	211	0	2177	2211
2023	103	(est.)	2028-29	34	144	143	165	179	174	152	160	163	134	178	171	207	218	0	2188	2222
2024	105	(est.)	2029-30	35	148	147	157	168	182	180	159	161	165	171	178	170	211	0	2197	2232
2025	105	(est.)	2030-31	35	147	151	162	160	171	188	188	160	163	210	171	177	173	0	2221	2256
2026	104	(est.)	2031-32	35	145	150	166	165	163	177	196	189	162	208	211	170	181	0	2283	2318
2027	103	(est.)	2032-33	35	145	148	165	169	168	169	185	197	191	206	209	209	173	0	2334	2369

Note: Ungraded students (UNGR) often are high school students whose anticipated years of graduation are unknown, or students with special needs - UNGR not included in Grade Combinations for 7-12, 9-12, etc.

Based on an estimate of births

Based on children already born

Based on students already enrolled

*Birth data provided by Public Health Vital Records Departments in each state.

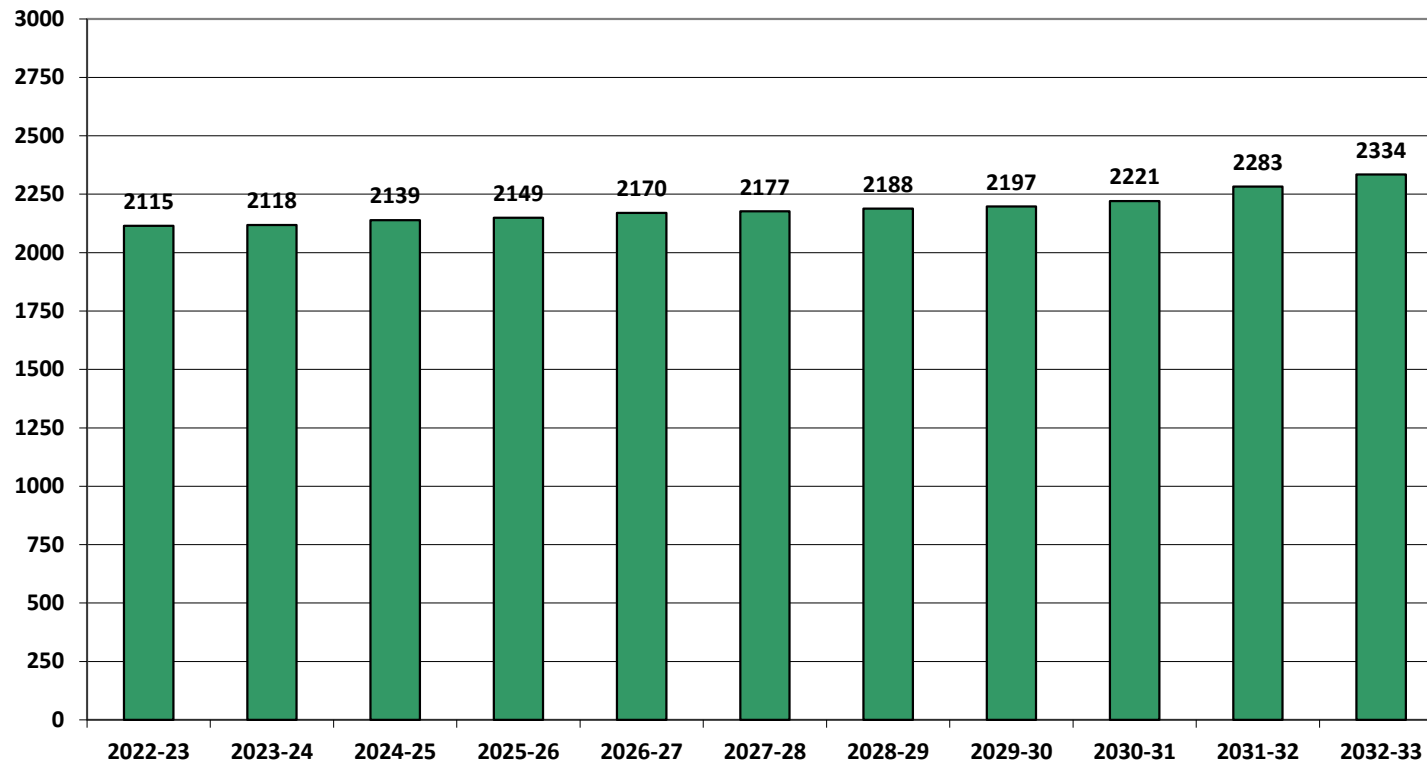
Projected Enrollment in Grade Combinations*									
Year	PK-4	K-4	K-6	K-8	5-8	6-8	7-8	7-12	9-12
2022-23	657	625	944	1269	644	491	325	1171	846
2023-24	681	649	935	1265	616	490	330	1183	853
2024-25	723	691	955	1285	594	462	330	1184	854
2025-26	779	747	1011	1307	560	434	296	1138	842
2026-27	801	767	1054	1327	560	405	273	1116	843
2027-28	818	784	1099	1372	588	435	273	1078	805
2028-29	839	805	1117	1414	609	457	297	1071	774
2029-30	837	802	1141	1467	665	485	326	1056	730
2030-31	826	791	1167	1490	699	511	323	1054	731
2031-32	824	789	1162	1513	724	547	351	1121	770
2032-33	830	795	1149	1537	742	573	388	1185	797

Projected Percentage Changes			
Year	K-12	Diff.	%
2022-23	2115	0	0.0%
2023-24	2118	3	0.1%
2024-25	2139	21	1.0%
2025-26	2149	10	0.5%
2026-27	2170	21	1.0%
2027-28	2177	7	0.3%
2028-29	2188	11	0.5%
2029-30	2197	9	0.4%
2030-31	2221	24	1.1%
2031-32	2283	62	2.8%
2032-33	2334	51	2.2%
Change		219	10.4%

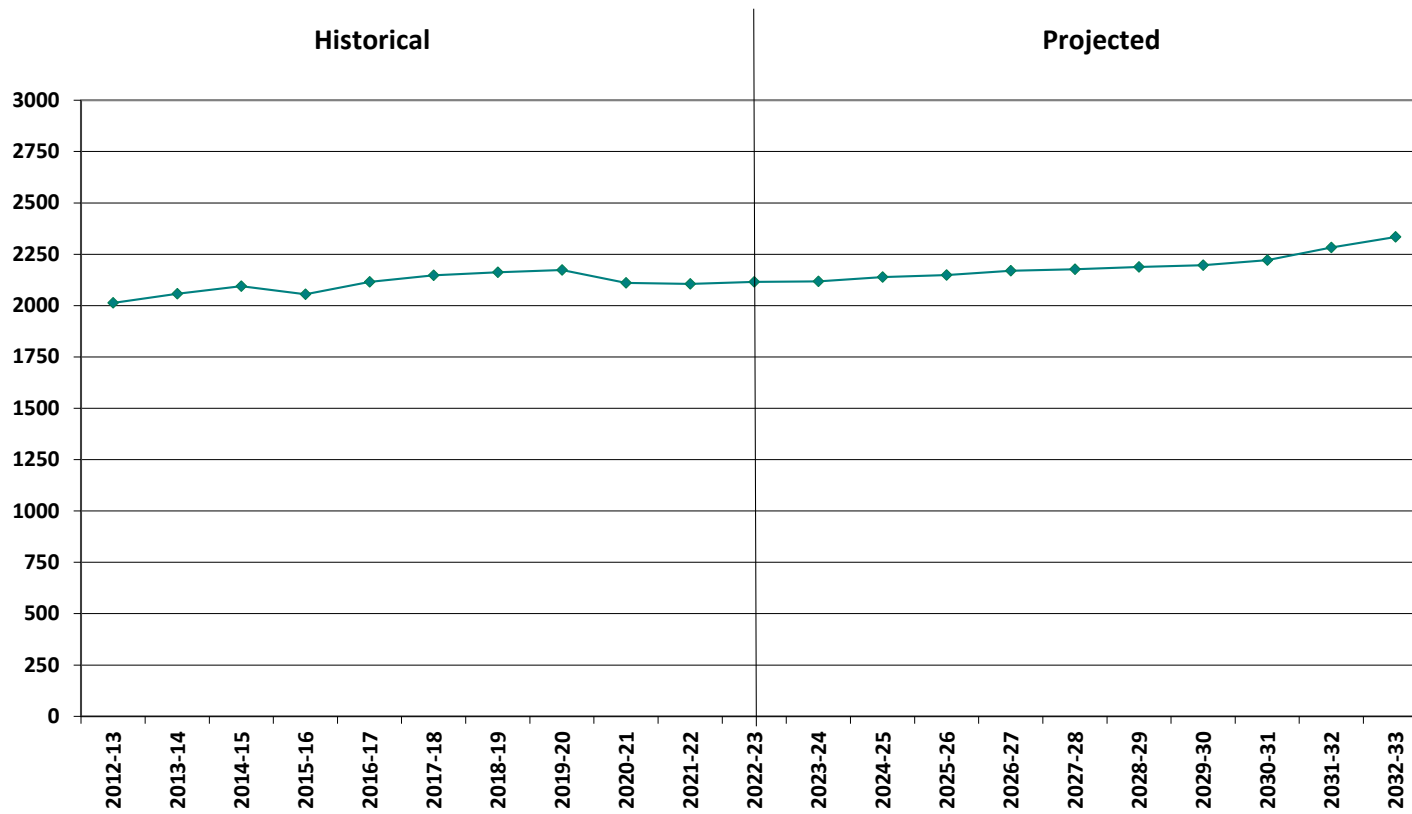
*Projections should be updated annually to reflect changes in in/out-migration of families, real estate sales, residential construction, births, and similar factors.

Projected Enrollment

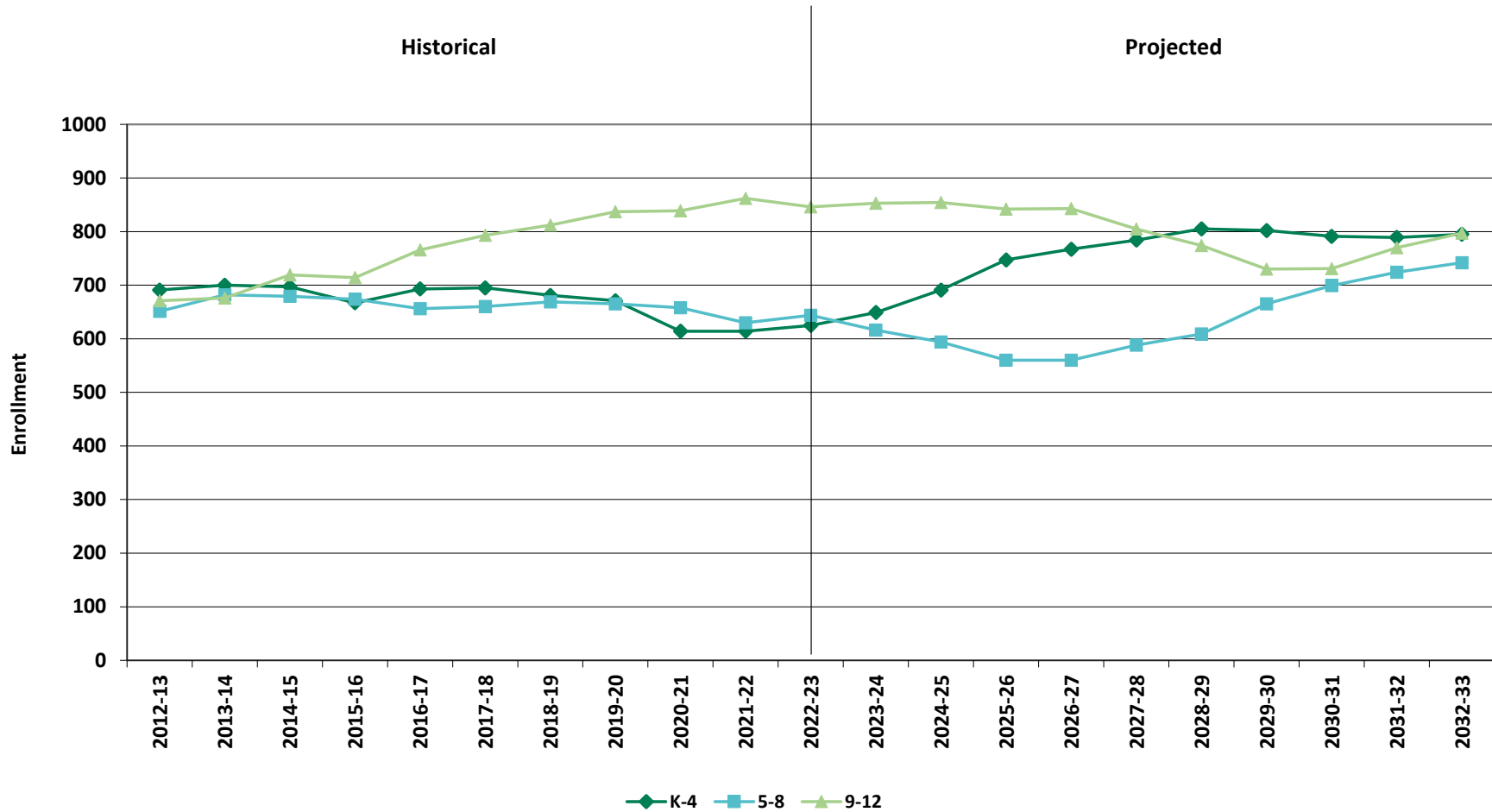
K-12, School Years 2022-23 to 2032-33



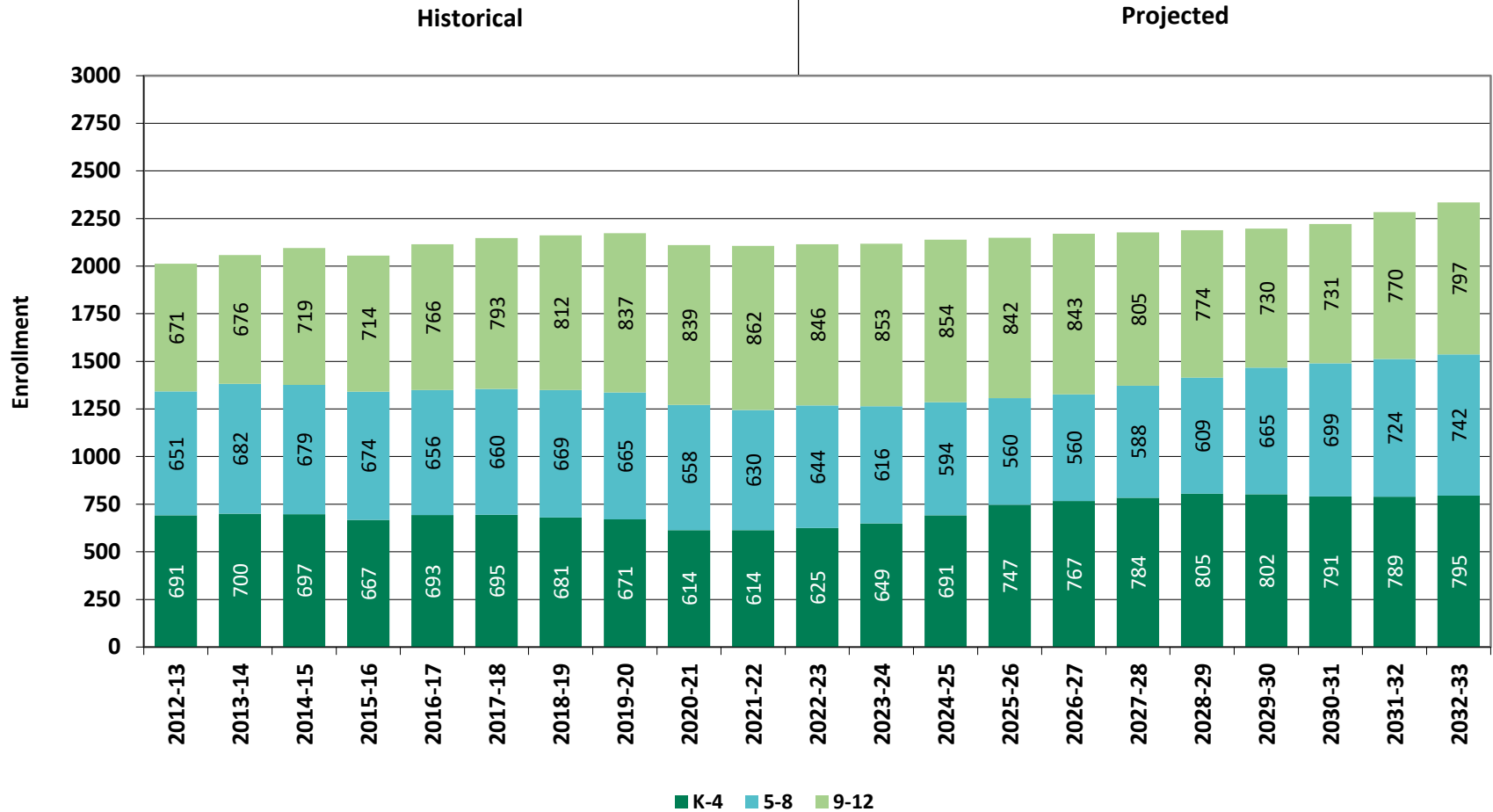
Historical & Projected Enrollment



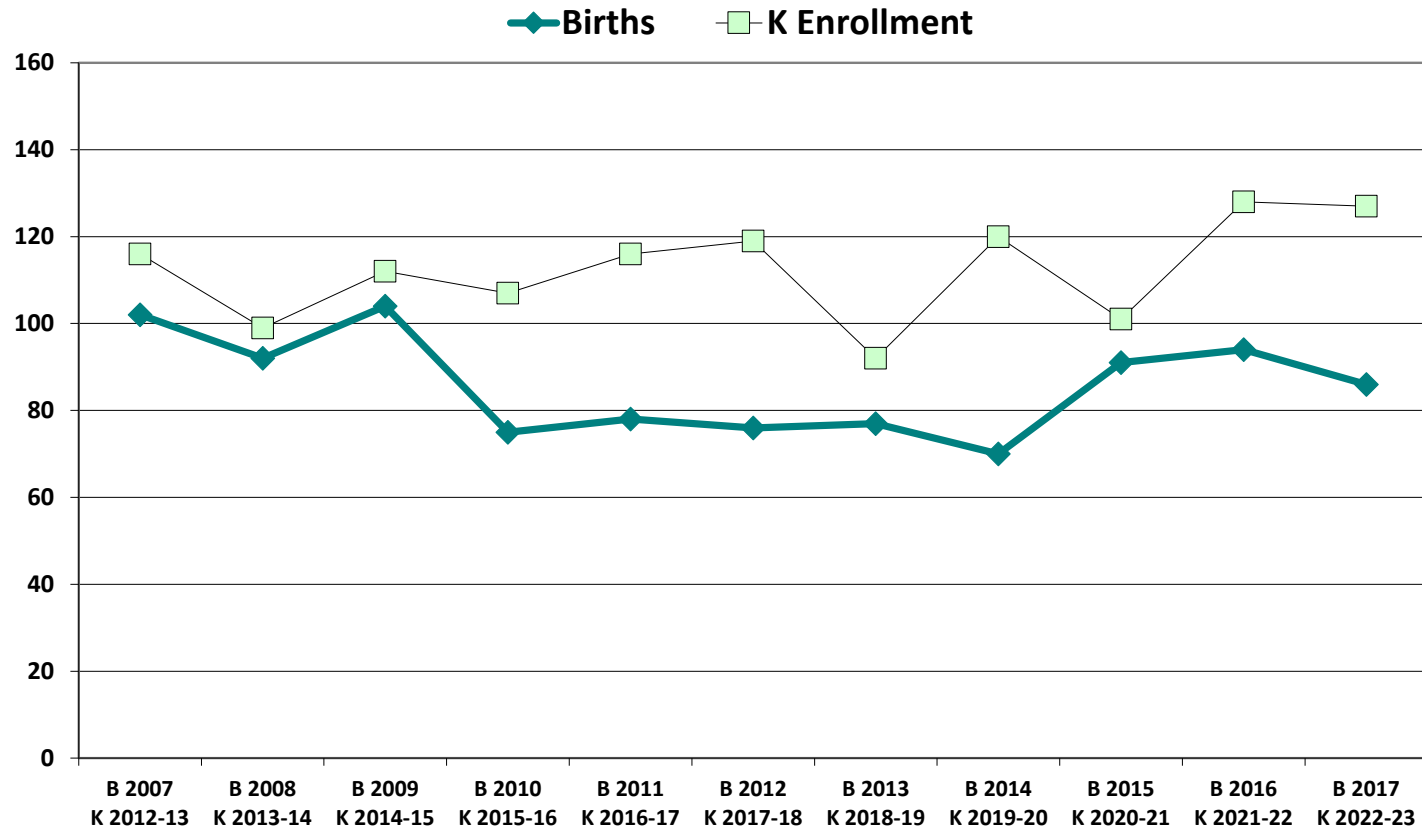
Historical & Projected Enrollments in Grade Combinations



Historical & Projected Enrollments in Grade Combinations



Birth-to-Kindergarten Relationship



Additional Information

Building Permits Issued (Source: HUD)		
Year	Single-Family	Multi-Units
2012	6D, 9L, 4M	19D
2018	2D, 25L, 8M	0
2019	12D, 24L, 2M	150D
2020	1D, 14L, 2M	7D
2021	5D, 4L	4D
2022	3D, 9L, 2M to date	6D to date

Key: D - Durham, L - Lee, M - Madbury

Enrollment History*		
Year	Career-Tech 9-12 Total	Non-Public K-12 Total
2012-13	n/a	n/a
2018-19	n/a	n/a
2019-20	n/a	n/a
2020-21	n/a	n/a
2021-22	n/a	n/a
2022-23	n/a	n/a

Residents in Non-Public Independent and Parochial Schools (General Education)*														
Oct. 1 Enrollment	K	1	2	3	4	5	6	7	8	9	10	11	12	K-12 TOTAL
	n/a	n/a	n/a	n/a	n/a	n/a	n/a	n/a	n/a	n/a	n/a	n/a	n/a	n/a

K-12 Home-Schooled Students*	
2022	66

K-12 Residents in Charter or Magnet Schools, or Choiced-out*	
2022	0

K-12 Special Education Outplaced Students*	
2022	7

K-12 Tuitioned-In, Choiced-In, & Other Non-Residents*	
2022	171

*The above data were provided by the District, with the exception of building permit data (provided by HUD).

"n/a" signifies that information was not provided by District.

New England's PK-12 Enrollment Trends

From 2020 to 2030, the US Department of Education anticipates changes in PK-12 enrollment of -2.4% in the South, -6.5% in the West, -3.8% in the Midwest, -6.2% in the Northeast, and a total of -4.3% nationwide.

State	Fall 2020 PK - 12	Fall 2030 Projected	PK-12 Decline	% Change 2020-2030
CT	509,058	475,600	-33,458	-6.6%
ME	172,455	161,800	-10,655	-6.2%
MA	921,712	879,900	-41,812	-4.5%
NH	169,027	144,600	-24,427	-14.5%
RI	139,184	130,200	-8,984	-6.5%
VT	82,401	74,600	-7,801	-9.5%

Source: U.S. Department of Education, National Center for Education Statistics, *Enrollment In Public Schools fall 1990 to fall 2030* , Table 203.20, March 2022.

Although most New England Districts are seeing a decline in the number of births, NESDEC's experience indicates that the impact on enrollment varies from District to District. Almost half of New England Districts have been growing in PK-12 enrollment, and a similar number are declining (often in rural areas), with the other Districts remaining stable.

Reliability and Use of this Document

PROJECTION METHODOLOGY

Cohort component (survival) technique is a frequently used method of preparing enrollment forecasts. NESDEC uses this method, but modifies it in order to move away from forecasts that are wholly computer- or formula-driven. Such modification permits the incorporation of important, current district-specific information into the generation of enrollment forecasts (such as in/out-migration of students, resident births, HUD-reported building permits, etc.). Percentages are calculated from the historical enrollment data to determine a reliable percentage of increase or decrease in enrollment between any two grades. For example, if 100 students enrolled in Grade 1 in 2018-19 increased to 104 students in Grade 2 in 2019-20, the percentage of survival would be 104%, or a ratio of 1.04. Ratios are calculated between each pair of grades or years in school over several recent years.

After study and analysis of the historical ratios, and based upon a reasonable set of assumptions regarding births, migration rates, retention rates, etc., ratios most indicative of future growth patterns are determined for each pair of grades. The ratios thus selected are applied to the present enrollment statistics to project into future years. The ratios are the key factors in the reliability of the projections, assuming validity of the data at the starting point.

RELIABILITY OF ENROLLMENT PROJECTIONS

Projections can serve as useful guides to school administrators for educational planning. Enrollment projections are more reliable in Years #1-4 in the future and less reliable in the "out-years." Projections six to ten years out may serve as a guide to future enrollments and are useful for planning purposes, but they should be viewed as subject to change given the likelihood of potential shifts in underlying assumptions/trends, such as student migration, births as they relate to Kindergarten enrollment, and other factors.

Projections that are based upon **the children who already are in the district** (the current K-12 population only) will be the most reliable. The second level of reliability will be for those children already **born into the community but not yet old enough to be in school**. The least reliable category is the group for which an estimate must be made to **predict the number of births**, thereby adding additional uncertainty. See these three multi-colored groupings on the "Projected Enrollment" tab.

Annual updates allow for early identification of recent changes in historical trends. When the actual enrollment in a grade is significantly different (higher or lower) from the projected number, it is important (yet difficult) to determine whether this is a one-year aberration or whether a new trend may have begun. **In light of this possibility, NESDEC urges all school districts to have updated enrollment forecasts developed by NESDEC each October.** This service is available at no cost to affiliated school districts.

USING THIS INFORMATION ELECTRONICALLY

If you would like to extract the information contained in this report for your own documents or presentations, you can use screenshots, which can be inserted into PowerPoint slides, Word documents, etc. Because screenshots create graphics, the image is not editable. Please feel free to contact us if you need assistance in this matter, by phone (508-481-9444) or by email (ep@nesdec.org).