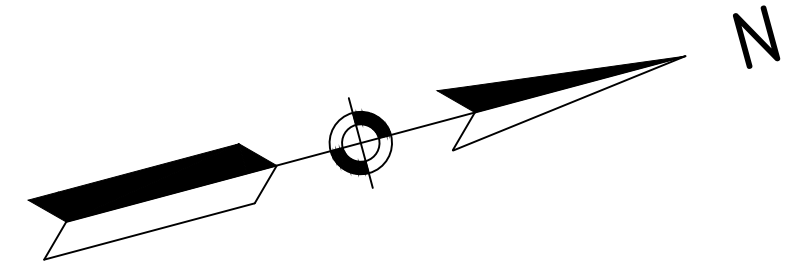
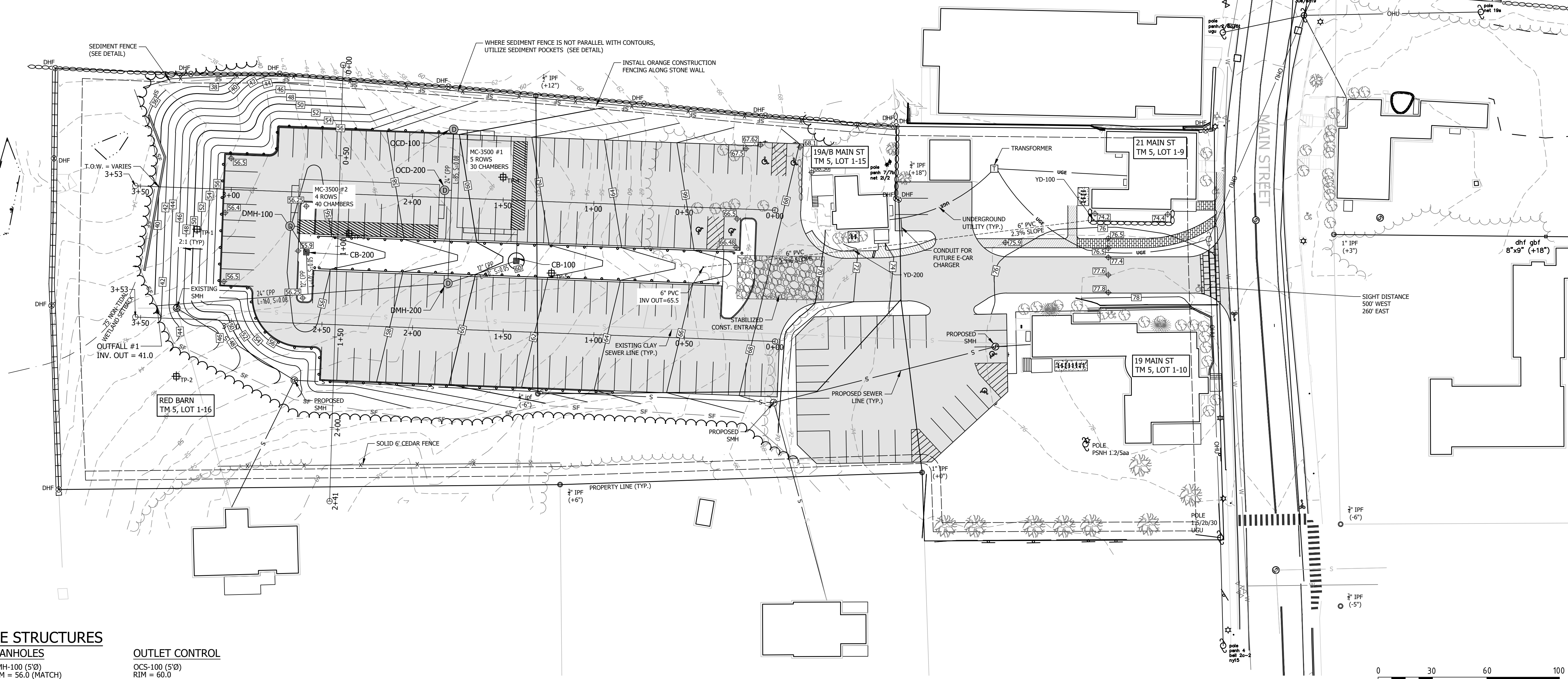


FINAL APPROVAL BY DURHAM PLANNING BOARD.
 CERTIFIED BY MICHAEL BEHRENDT, TOWN PLANNER
 CERTIFIED _____
 DATE _____



NOTES
 1. SIGHT DISTANCE AT MAIN STREET EXIT IS GREATER THAN 500 FT TO THE WEST AND 260 FT TO THE EAST



STORM DRAINAGE STRUCTURES

CATCH BASINS

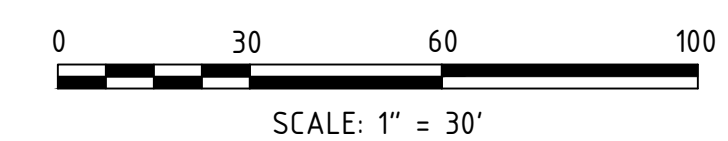
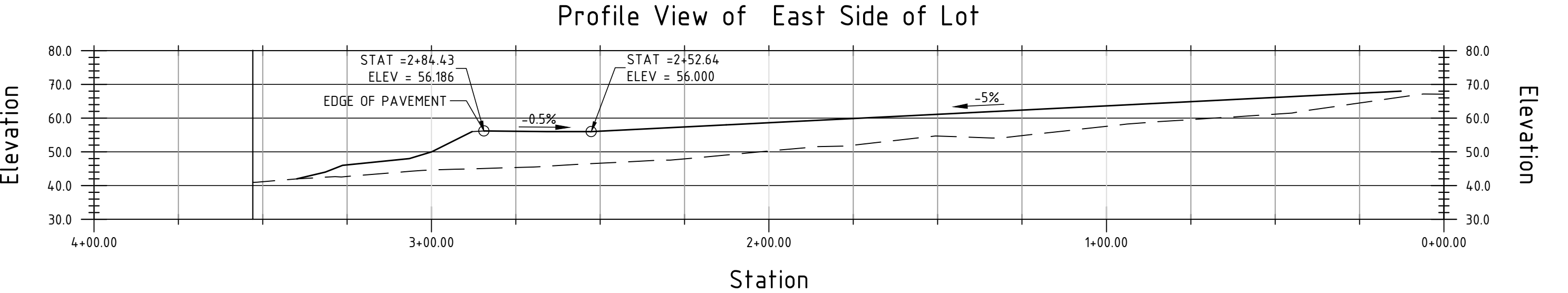
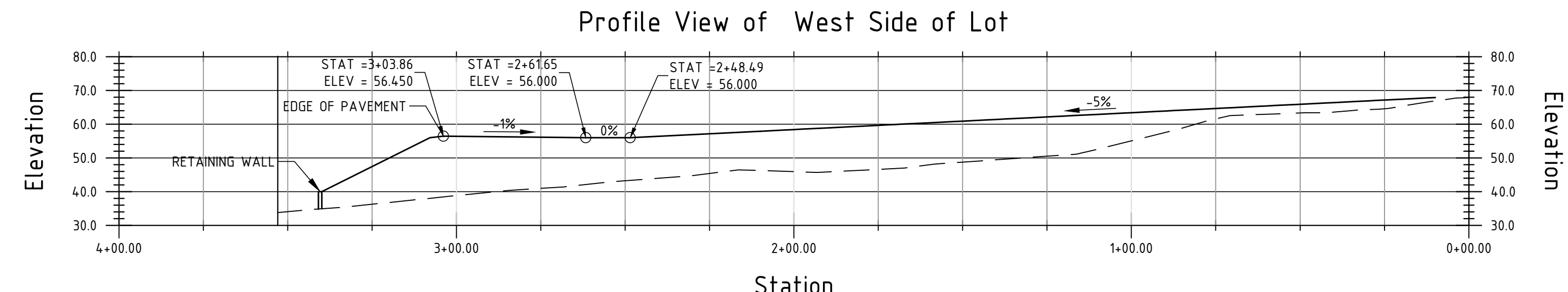
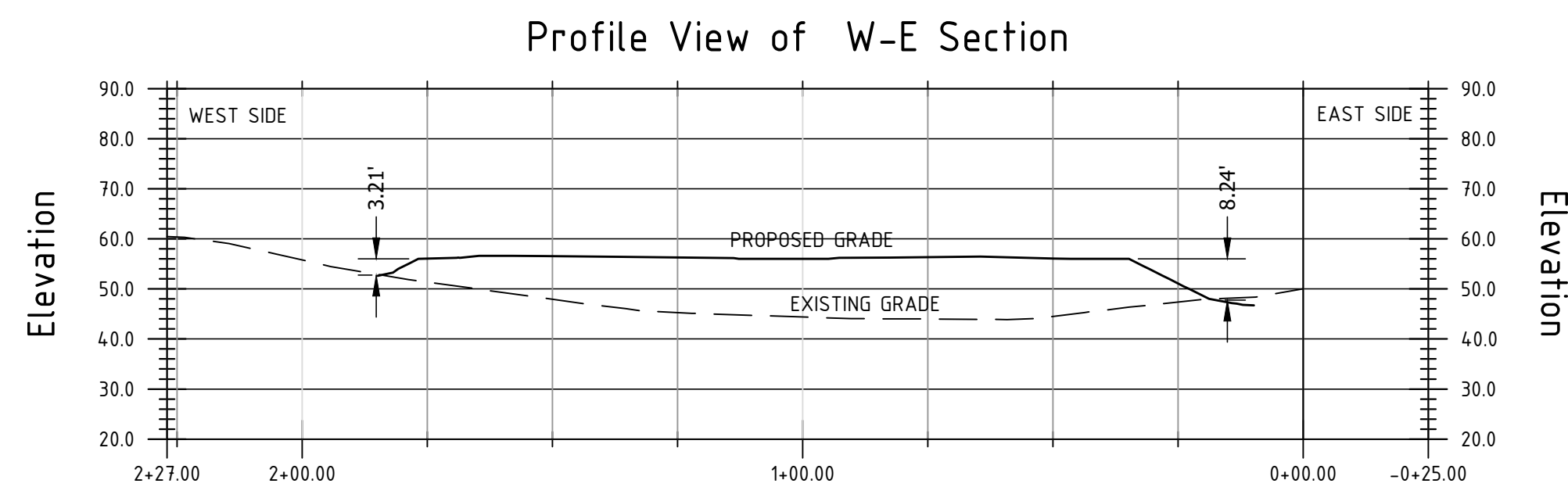
- CB-100 (5'Ø)
RIM = 59.5
12" INV. = 55.7
18" INV. = 56.7
SUMP = 4'
- CB-200 (5'Ø)
RIM = 55.5
12" INV. = 50.6
18" INV. = 52.6
SUMP = 4'
- YD-100 (8"Ø PVC)
RIM = 74.0
INV. = 71.5
- YD-200 (8"Ø PVC)
RIM = 71.8
INV. = 68.9
INV. = 65.6

MANHOLES

- DMH-100 (5'Ø)
RIM = 56.0 (MATCH)
18" INV. 50.0 (FROM CB-200)
18" INV. = 48.5 (TO MANIFOLD)
24" INV. = 48.5 (TO INFILTRATOR ROW)
- DMH-200 (4'Ø)
RIM = 59.5 (MATCH)
12" INV. = 54.7 (FROM CB-100)
24" INV. = 44.9 (FROM SC3500)
24" INV. = 44.8 (TO OUTFALL)

OUTLET CONTROL

- OCS-100 (5'Ø)
RIM = 60.0
12" INV. = 52.9
18" INV. = 52.9
6" INV. = 51.7 (UNDERDRAIN)
CONCRETE WEIR TOP = 57.20
ORIFACE 24"W, 4"H = 53.75
ORIFACE 12"W, 2"H = 55.65
24" INV. = 51.7
- OCS-200 (5'Ø)
RIM = 59.2 (MATCH)
18" INV. = 49.5
18" INV. = 49.5
6" INV. = 48.3 (UNDERDRAIN)
CONCRETE WEIR TOP = 52.80
ORIFACE 24"W, 4"H = 49.35
ORIFACE 12"W, 2"H = 51.25
18" INV. = 48.3

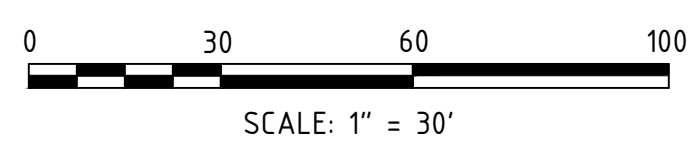
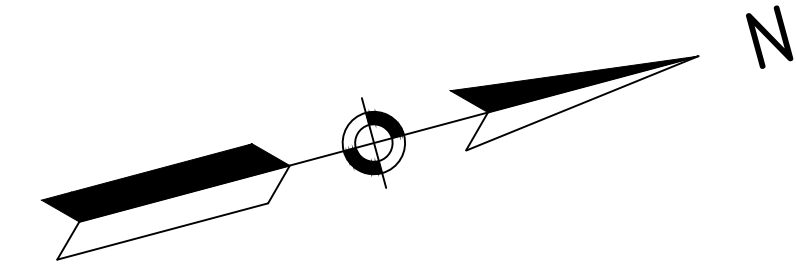
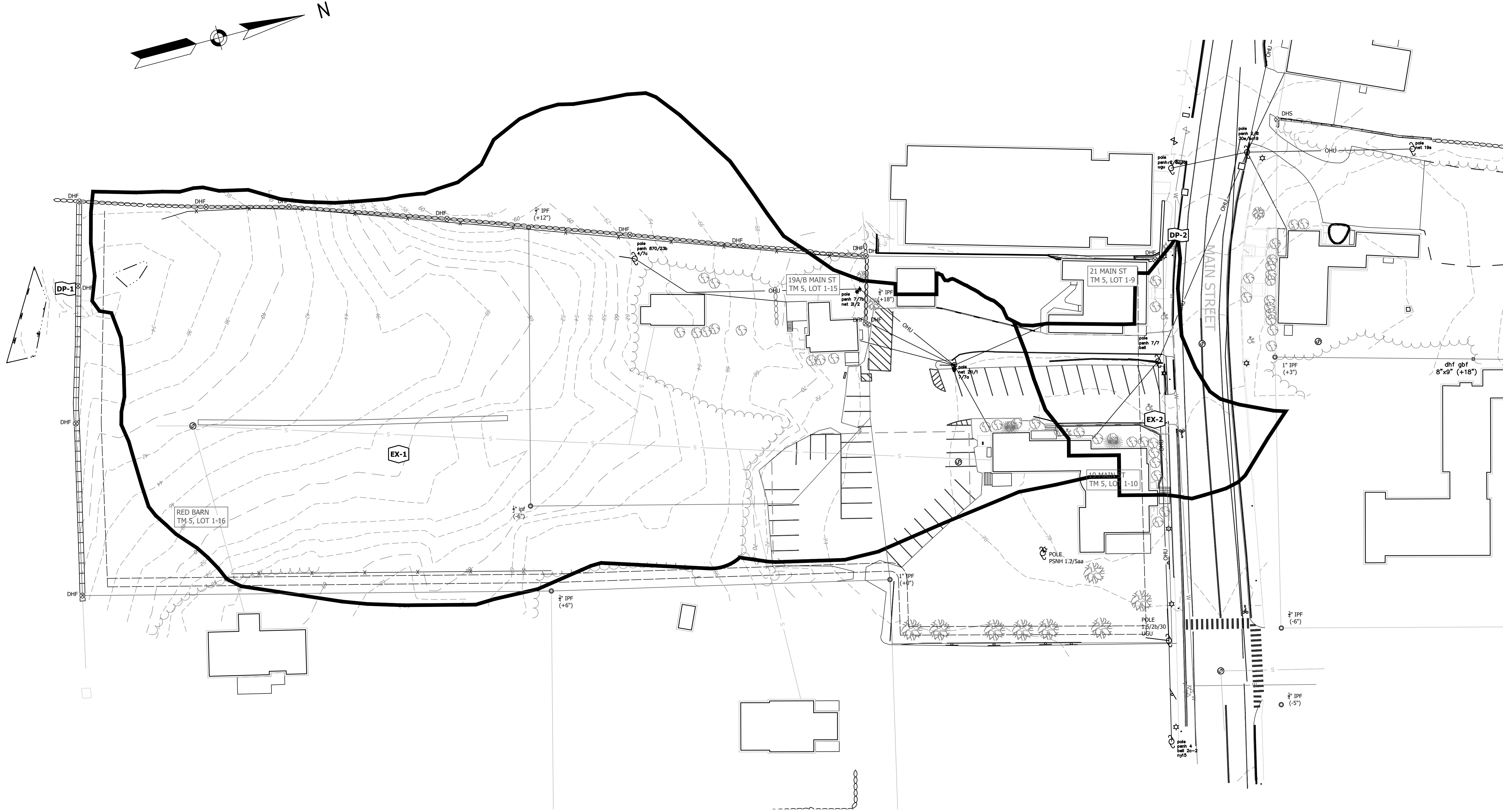


NO.	DATE	REVISION DESCRIPTION
1.	02/02/22	REVISED SUBMISSION PER TRC COMMENTS
0.	11/30/21	INITIAL SUBMISSION FOR 2 ROW PARKING LAYOUT

PROJECT #:	18-041
DATE:	11/30/2021
SCALE:	1" = 30'
ENGINEERED BY:	AWM
DRAWN BY:	AWM
CHECKED BY:	MJS

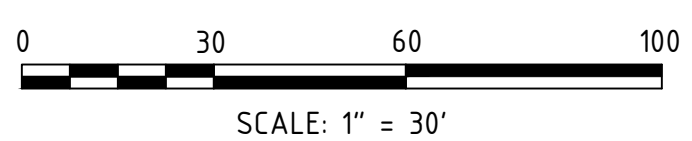
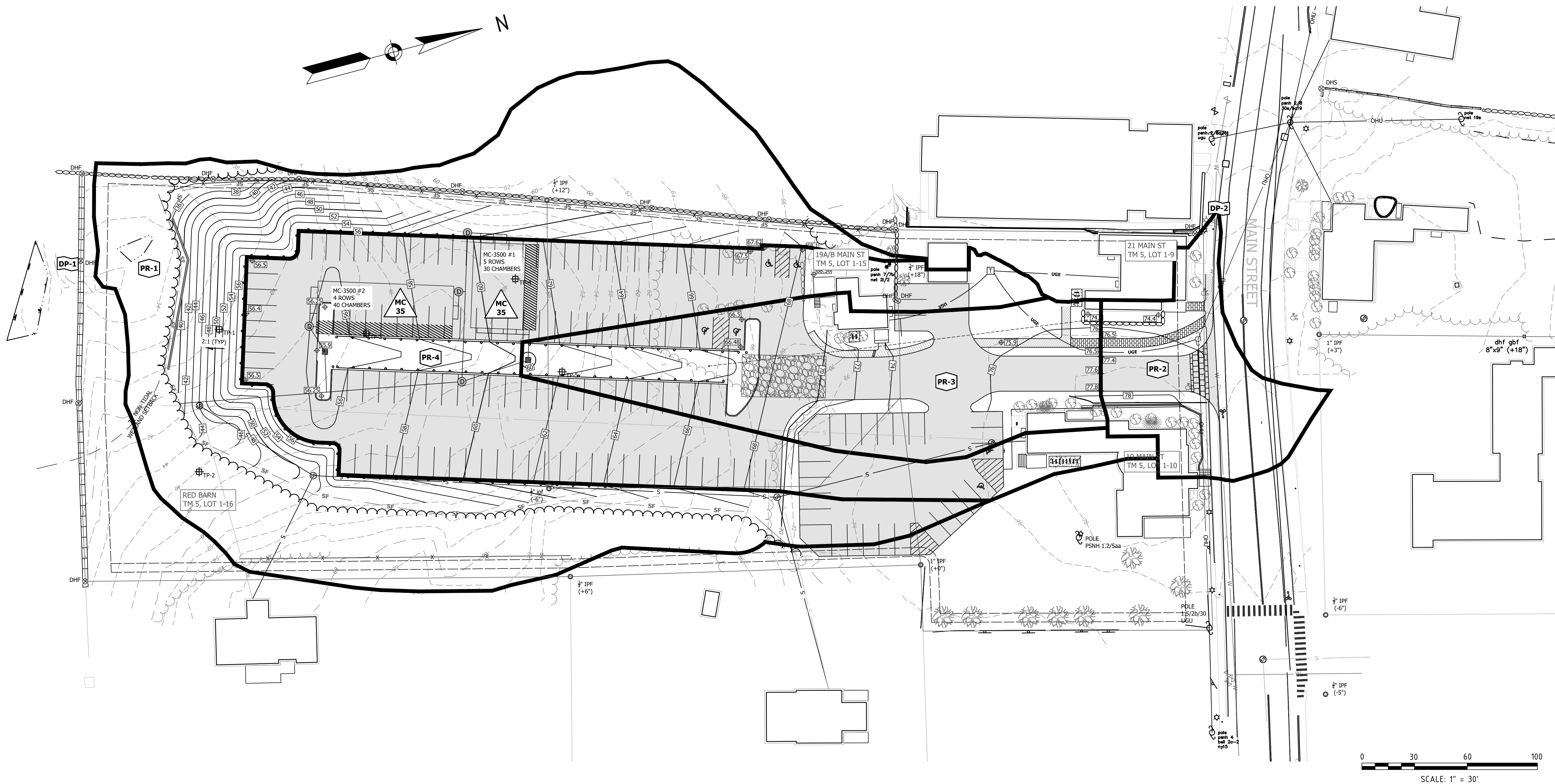
horizons Engineering
 Civil and Structural Engineering
 Land Surveying and Environmental Consulting
 MAINE • NEW HAMPSHIRE • VERMONT
 www.horizonsengineering.com

GRADING, DRAINAGE, AND UTILITY PLAN
 PREPARED FOR
 TOOMERES, LLC
 TAX MAP 5, LOTS 1-9, 1-10, 1-15, 1-16
 19 MAIN ST AND 21 MAIN ST, DURHAM, NH 03824



<p>PRE-DEVELOPMENT DRAINAGE PLAN</p> <p>PREPARED FOR TOOMERES, LLC TAX MAP 5, LOTS 1-9 AND 1-10 19 MAIN ST AND 21 MAIN ST, DURHAM, NH 03824</p>	<p>PROJECT #: 18-041</p> <p>DATE: 11/30/2021</p> <p>SCALE: 1" = 30'</p> <p>ENGINEERED BY: AWS</p> <p>DRAWN BY: AWS</p> <p>CHECKED BY: MJS</p>	<p>NO.</p> <p>DATE</p> <p>REVISION DESCRIPTION</p>	<p>ENG</p> <p>DWG</p>
	<p>1. 02/02/22 REVISION SUBMISSION PER TRC COMMENTS</p> <p>0. 11/30/21 INITIAL SUBMISSION FOR 2 ROW PARKING LAYOUT</p>	<p>MCS</p> <p>AWS</p>	

horizons
Engineering
Civil and Structural Engineering
Land Surveying and Environmental Consulting
MAINE • NEW HAMPSHIRE • VERMONT
www.horizonsengineering.com



NO.	DATE	REVISION DESCRIPTION
1.	02/02/22	REVISED SUBMISSION PER TRC COMMENTS
0.	11/30/21	INITIAL SUBMISSION FOR 2 ROW PARKING LAYOUT

PROJECT #:	18-041
DATE:	11/30/2021
SCALE:	1" = 30'
ENGINEERED BY:	AWM
DRAWN BY:	AWM
CHECKED BY:	MJS

horizons
Engineering
 Civil and Structural Engineering
 Land Surveying and Environmental Consulting
 MAINE • NEW HAMPSHIRE • VERMONT
 www.horizonsengineering.com

POST-DEVELOPMENT DRAINAGE PLAN
 PREPARED FOR
 TOOMERFS, LLC
 TAX MAP 5, LOTS 1-9 AND 1-10
 19 MAIN ST AND 21 MAIN ST, DURHAM, NH 03824

POST