



48 Stevens Hill Road, Nottingham, NH 03290
603-734-4298 ♦ mark@westenv.net

Memorandum

January 25, 2021

To: Durham Conservation Commission and Planning Board

From: Mark West, West Environmental

RE: Mulhern Subdivision, Durham, NH

SUBJ: Wetland and Buffer Impact Reduction and Wildlife Corridors

This memo is sent to document the wetland and wetland buffer impact reduction shown on the new plan set submitted last week and to address the issue of potential wildlife corridors on the site.

Wetlands and Buffers

West Environmental, Inc. (WEI) worked with MJS engineering to identify areas where wetland and buffer impact could be reduced to minimize direct and indirect impacts to the wetlands.

The result shown on the plans revision date 1-20-21 are as follows.

Wetland Impact 1 was reduced from 6,879 SF to 6,062 SF.

Wetland Impact 2 was reduced from 906 SF to 902 SF.

Wetland Impact 3 was reduced from 1,431 SF to 1,417 SF.

Total wetland impact was reduced from 9,217 SF to 8,381 SF.

Total Reduction is 836 SF the majority of which was in the crossing of Wetland 1.

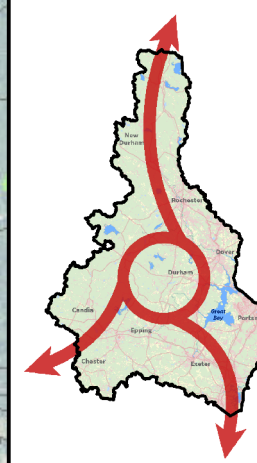
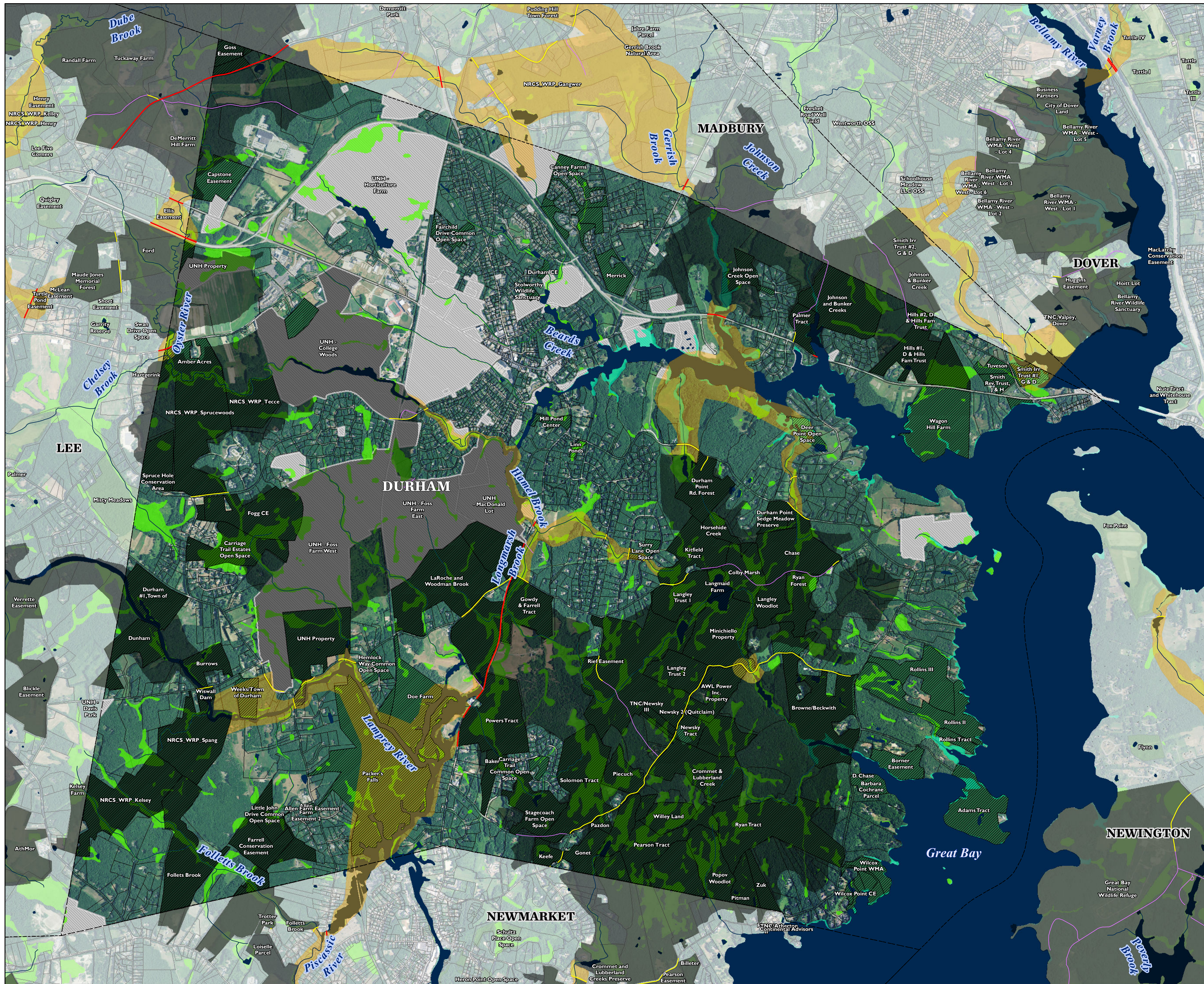
The 75-foot Wetland Buffer Impacts were reduced from 41,894 SF to 36,674 SF a reduction of 5,220 SF the majority of which was located adjacent to Wetland 3a between the stormwater management system and the wetland. The stormwater management system is critical to the protection of water quality in the downstream systems. The 25-foot buffer closest to the wetland is now left intact which will help protect the functions of this wetland.

Wildlife Corridors

I have attached a map prepared by The Nature Conservancy (TNC) to address concerns raised at the last Conservation Commission meeting regarding impacts to Wildlife Corridors. These maps were prepared in 2019 to identify wildlife corridors throughout the seacoast region and highlight pinch points where there are impacts to movement. I have included the overall Durham Map and a zoom map focused on the vicinity of the proposed project site.

This map includes areas in Madbury near the site. The TNC map shows a wildlife corridor along the northern boundary of the site associated with the perennial stream. This map also shows prioritized habitat blocks and this property was not included.

This does not mean that wildlife does not move through other undeveloped parcels, but it verifies that the most important movement is along the northern boundary of the property.



Connect The Coast

Prioritized Habitat Blocks, Wildlife Corridors & Priority Road Segments

Durham,
New Hampshire

Legend

Priority Road Segment

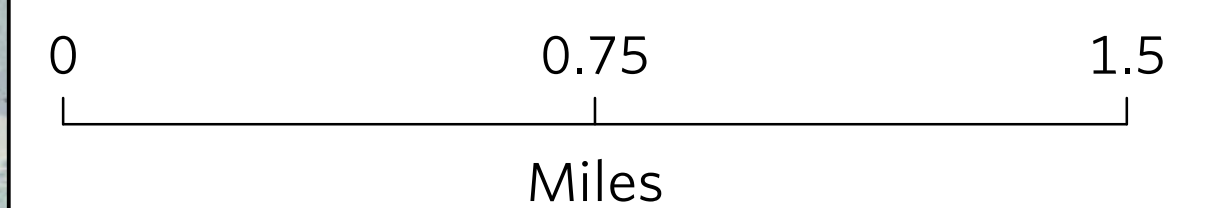
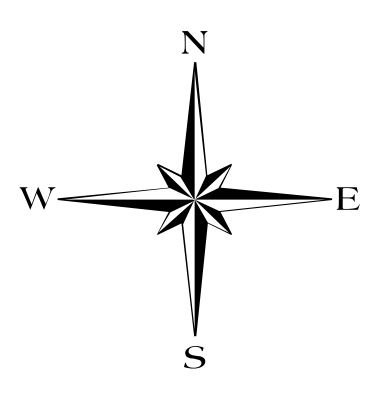
By Ownership

- State Road
- Local Road
- All Other Roads

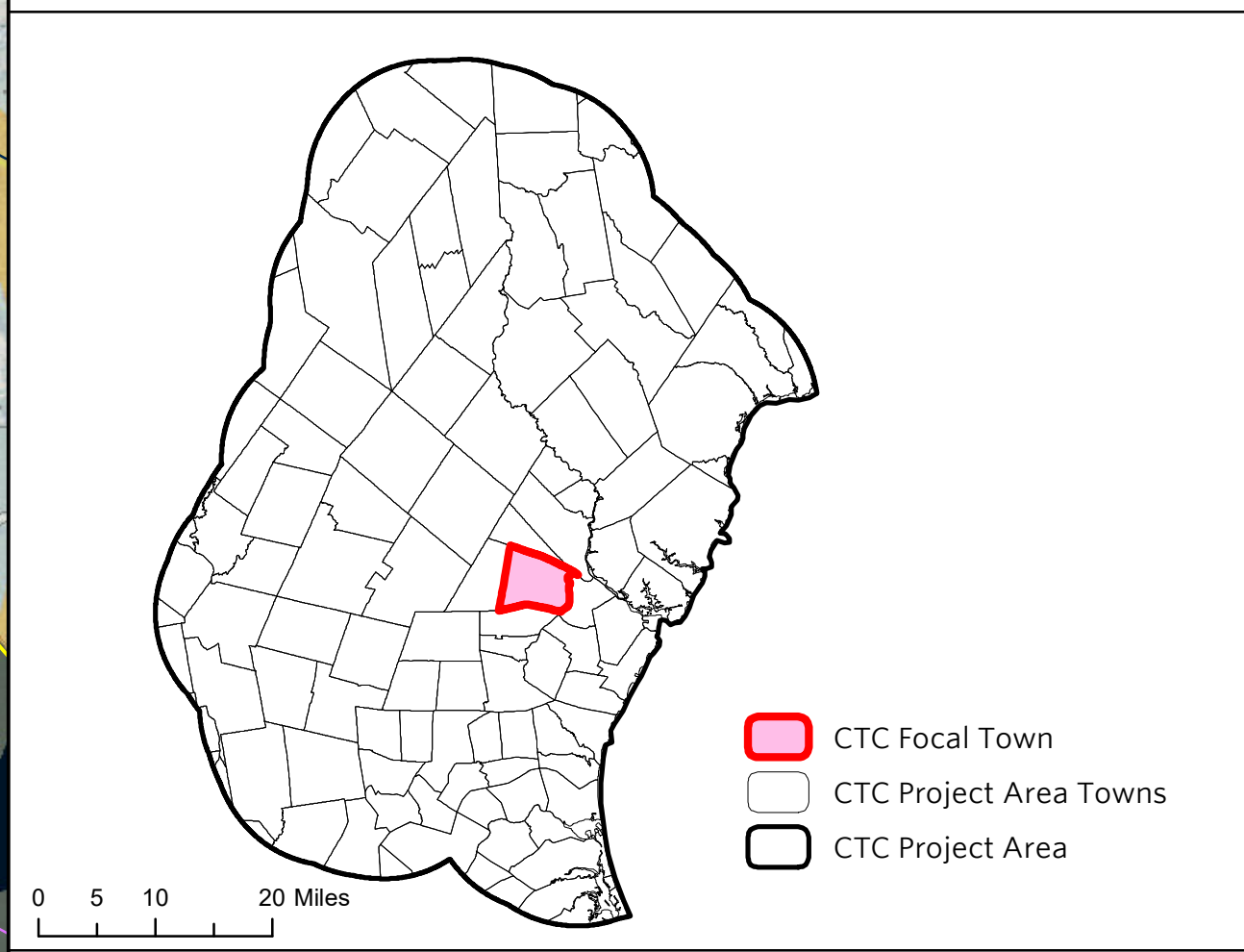
- Wildlife Corridor
- Prioritized Habitat Block
- Conservation Land
- Public/Other Land
- Parcels
- Municipal Boundary

Surface Water or Wetland

- Streams/Rivers
- Estuary
- Freshwater
- Wetland
- Open Water



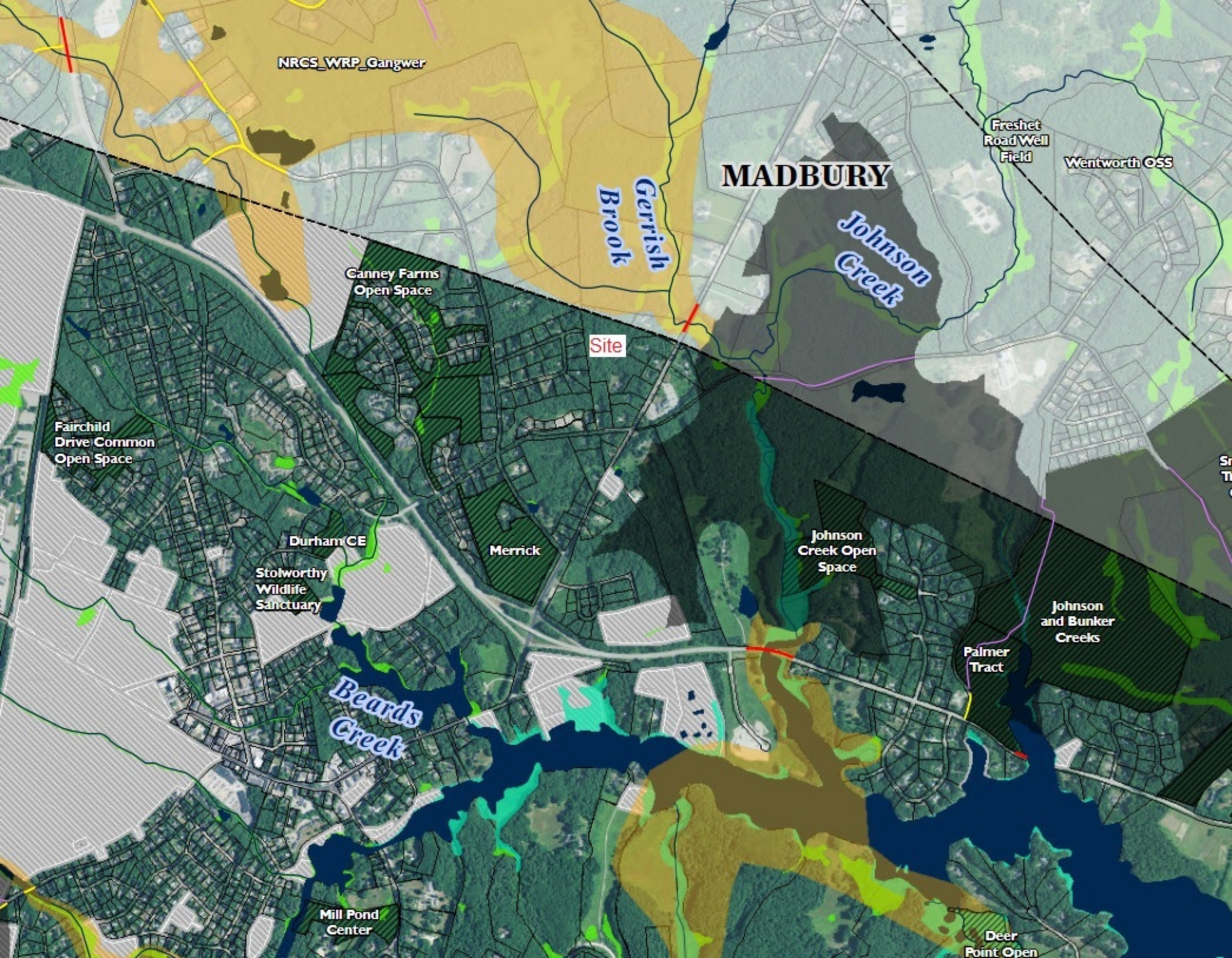
Locus Map



Map created 10/28/2019 by:
The Nature Conservancy
New Hampshire

Data displayed from NH GRANIT, NHDES, MassGIS, Maine Office of GIS & The Nature Conservancy.

© 2019 The Nature Conservancy. All rights reserved.



NRCs_WRP_Gangwer

MADBURY

Gerrish Brook

Johnson Creek

Freshet Road Well Field

Wentworth OSS

Ganney Farms Open Space

Site

Fairchild Drive Common Open Space

Durham CE

Merrick

Stolworthy Wildlife Sanctuary

Johnson Creek Open Space

Johnson and Bunker Creeks

Beards Creek

Palmer Tract

Mill Pond Center

Deer Point Open