



# A880SRLED TOWN SQUARE SERIES

LED

EPA  
1.42 (ft<sup>2</sup>)  
WEIGHT  
44 LBS

7 YEAR  
WARRANTY

Lumen  
Range  
2,205 to  
11,895

Life Span  
L70  
MINIMUM  
100,000  
HOURS

UL  
LISTED

CLICK  
FOR FAQ's

RATED  
IP65

JOB NAME

FIXTURE TYPE

MEMO

## BUILD A PART NUMBER

ORDERING EXAMPLE: **2A-A880SRLED-5P-4ARC45 T5-MDH03-A-PEC-FHD/480PM/4212FP4/FCC/BKT**

Mounting Config.	Fixture	Fitter	LED	CCT	Type	Driver	Lens	Option Control Receptacle	Option Control	Option Fuse	Option GFI	Option Term. Block	Option House Side Shield	Arm See Arm Spec Sheets	Pole See Pole Spec Sheets	Finish

### Mounting Configuration

(Click here to link to mounting configuration specification page)

- IW • 2A • 3A90 • 1AM
- PT • 2A90 • 3APT • 2AM
- 1A • 2APT • 4A • 45OPB
- 1APT • 3A • 4APT

W = Wall Mount PT = Post Top A = Arm Mount AM = Arm Mid-Mount PB = Pier Base

### Fixture

- A880SRLED

### Fitter

- 5P • 992 • 995 • BD7 • C2097
- 990 • 993 • BD4 • OL3
- 991 • 994 • BD5 • OL4

### LED

- 6ARC • 4ARC • 3ARC • 2ARC

### CCT - Color Temperature (K)

- 45(OO) • 35(OO) • 27(OO)

### Type

- T2 • T3 • T3R • T4 • T5

### Driver

- MDL03 (120V-277V, 350mA)
- MDL05 (120V-277V, 525mA)
- MDH03 (347V-480V, 350mA)
- MDH05 (347V-480V, 525mA)

### Lens

- A (Acrylic) • P (Polycarbonate)

### Options (Click here to view accessories sheet)

- R<sup>1</sup> 3-Pin control receptacle only
- R5<sup>1</sup> 5-Pin control receptacle only
- R7<sup>1</sup> 7-Pin control receptacle only
- SRR Roof mounted 3-Pin control receptacle only
- SRR5 Roof mounted 5-Pin control receptacle only
- SRR7 Roof mounted 7-Pin control receptacle only
- PE<sup>2</sup> Twist-Lock Photocontrol (120v-277v)
- PE3<sup>2</sup> Twist-Lock Photocontrol (347v)
- PE4<sup>2</sup> Twist-Lock Photocontrol (480v)
- SC<sup>2</sup> Shorting Cap

- PEC Electronic Button Photocontrol (120v-277v)
- PEC4 Electronic Button Photocontrol (480v)
- FHD<sup>3</sup> Double Fuse and Holder
- G<sup>1</sup> 15A Duplex GFI for Utility Fitter
- TB<sup>1</sup> Terminal Block
- HSS 120° House Side Shield

<sup>1</sup> For 900 series utility fitter only.

<sup>2</sup> Requires control receptacle.

<sup>3</sup> Ships loose for installation in base.

### Arm (Click here to link to arm specification page)

See Arms & Wall Brackets specification sheets.

- 50 • 70 • 480 • 6236 • TA • BA
- 478 • 80 • 55 • 579 • TASCR

### Pole (Click here to link to pole specification page)

See Pole specification sheets.

### Finish (Click here to view paint finish sheet)

#### Standard Finishes<sup>4</sup>

- BKT Black Textured
- WHT White Textured
- PGT Park Green Textured
- ABZT Architectural Medium Bronze Textured
- DBT Dark Bronze Textured

<sup>4</sup> Smooth finishes are available upon request.

#### Custom Finishes<sup>5</sup>

- CM Custom Match
- OI Old Iron
- RT Rust
- WBR Weathered Brown
- CD Cedar
- WBK Weathered Black
- TT Two Tone

<sup>5</sup> Custom colors require upcharge.

#### Sternberg Select Finishes

- VG Verde Green
- SI Swedish Iron
- OWGT Old World Gray Textured

## Specifications

### Fixture

The caged acorn shall be 18" diameter and 38-5/8" tall. The caged acorn shall be supplied with a cast aluminum finial and a solid, cast

aluminum roof which includes optimized heat sinks to provide maximum life and performance for the LED light sources. The caged acorn shall be sealed to the cast aluminum roof to provide a moisture-free and bug-free optics chamber for the LED light sources and Rated IP65. The luminaire shall have a distinctively styled, decorative cast aluminum cage. The Luminaire shall be UL listed in US and Canada.

### Fitter - Standard

The fitter shall be heavy wall cast aluminum, 356 alloy for high tensile strength. It shall have an 8-1/2" inside diameter opening to attach to the 8" neck of the acorn globe. The fitter shall have a one-piece ring bug gasket to resist insect penetration into lamp assembly.

### 900 Series Utility Fitter Option

The fitter shall be heavy wall cast aluminum, 360 die cast alloy for high tensile strength. It shall have a 9-1/4" inside diameter opening to attach to the 8" neck of the acorn globe. It shall have a hinged, tool-less entry door that provides open access to all of the components. The 900 series shall have an optional terminal block for ease of wiring, an optional Twist-Lock Photocontrol receptacle, an optional single GFI outlet for auxiliary power needs. The top mounted ballast mounting plate shall be cast aluminum and provide tool-less removal from the housing using 2 finger latches. When ordered with a Sternberg aluminum pole, the fitter shall be set screwed to the pole top or tenon. The fitter shall have a one-piece ring bug gasket to resist insect penetration into lamp assembly. When supplied with GFI receptacle a hole will be provided for cord and plug installation with the access door closed. When cord and plug is not in use a filler plug will be provided and shall be tethered to the fitter for easy recovery and installation.

See next page



**SternbergLighting**

ESTABLISHED 1923 / EMPLOYEE OWNED

800-621-3376  
555 Lawrence Ave., Roselle, IL 60172  
info@sternberglighting.com  
www.sternberglighting.com

5/17 STERNBERG LIGHTING. ALL RIGHTS RESERVED. PRINTED IN THE USA.

# A880SRLED TOWN SQUARE SERIES

LED

## LEDs

The luminaire shall use high output, high brightness LED's. They shall be mounted in arrays, on printed circuit boards designed to maximize heat transfer to the heat sink surface. The arrays shall be roof mounted to minimize up-light. The LED's and printed circuit boards shall be 100% recyclable; they shall also be protected from moisture and corrosion by a conformal coating of 1 to 3 mils. They shall not contain lead, mercury or any other hazardous substances and shall be RoHS compliant. The LED life rating data shall be determined in accordance with IESNA LM-80. The High Performance white LED's will have a life expectancy of approximately 100,000 hours with not less than 70% of original brightness (lumen maintenance), rated at 25°C. The High Brightness, High Output LED's shall be 4500K (3500K or 2700K option) color temperature with a minimum CRI of 70. Consult factory for custom color CCT. The luminaire shall have a minimum \_\_\_\_\_ (see table) delivered initial lumen rating when operated at steady state with an average ambient temperature of 25°C (77°F).

## Optics

The luminaire shall be provided with individual, acrylic, refractor type optics applied to each LED. The luminaire shall provide Type \_\_\_\_\_ (2, 3, 3R, 4 or 5) light distribution per the IESNA classifications. Testing shall be done in accordance with IESNA LM-79.

## Electronic Drivers

The LED driver shall be U.L. Recognized. It shall be securely mounted inside the fixture, for optimized performance and longevity. It shall be supplied with a quick-disconnect electrical connector on the power supply, providing easy power connections and fixture installation. It shall have overload as well as short circuit protection, and have a DC voltage output, constant current design, 50/60HZ. It shall be supplied with line-ground, line-neutral and neutral-ground electrical surge protection in accordance with IEEE/ANSI C62.41.2 guidelines. It shall be dimmable using a 0-10v signal.

**For sources over 50w:** The driver shall have a minimum efficiency of 90%. The driver shall be rated at full load with THD<20% and a power factor of greater than 0.90. The driver shall contain over-heat protection.

**For sources under 50w:** The driver shall have a minimum efficiency of 88%.

## Lens

Materials include DR Acrylic or Polycarbonate. An injection molding process adds textured surface for glare mitigation, even wall thickness and impact resistance.

## Photocontrols

**Button Style:** On a single assembly the photo-control shall be mounted on the fixture and pre-wired to driver. On multiple head assembly's the photocontrol shall be mounted in the pole shaft on an access plate. The electronic button type photocontrol is instant on with a 5-10 second turn off, and shall turn on at 1.5 footcandles with a turn-off at 2-3 footcandles. Photocontrol is 120-277 volt and warranted for 6 years.

**Twist-Lock Style:** The photocontrol shall be mounted in the utility fitter (or roof) and pre-wired to driver. The twist lock type photocontrol is instant on with a 3-6 second turn off, and shall turn on at 1.5 footcandles with a turn-off at 2-3 footcandles. Photocontrol is 120-277 volt and warranted for 6 years.

## Warranty

Seven-year limited warranty. See product and finish warranty guide for details.

## Finish

Refer to website for details.

## Performance

LIGHT SOURCE	T2 DELIVERED LUMENS	EFFICACY (LPW)	T3 DELIVERED LUMENS	EFFICACY (LPW)	T3R DELIVERED LUMENS	EFFICACY (LPW)	T4 DELIVERED LUMENS	EFFICACY (LPW)	T5 DELIVERED LUMENS	EFFICACY (LPW)	WATTAGE
6ARC27T_-MDL05	9210	64.0	8895	61.8	9325	64.8	9310	64.7	9280	64.4	144
6ARC35T_-MDL05	10510	73.0	10145	70.5	10640	73.9	10620	73.8	10590	73.5	144
6ARC45T_-MDL05	11810	82.0	11400	79.2	11955	83.0	11935	82.9	11895	82.6	144
6ARC27T_-MDL03	6730	70.1	6485	67.6	6795	70.8	6785	70.7	6840	71.3	96
6ARC35T_-MDL03	7680	80.0	7400	77.1	7750	80.7	7740	80.6	7805	81.3	96
6ARC45T_-MDL03	8625	89.8	8315	86.6	8710	90.7	8700	90.6	8770	91.4	96
4ARC27T_-MDL03	4530	68.6	4350	65.9	4540	68.8	4530	68.6	4555	69.0	66
4ARC35T_-MDL03	5170	78.3	4965	75.2	5180	78.5	5165	78.3	5200	78.8	66
4ARC45T_-MDL03	5810	88.0	5580	84.5	5820	88.2	5805	88.0	5840	88.5	66
3ARC27T_-MDL03	3410	64.3	3345	63.1	3455	65.2	3425	64.6	3475	65.6	53
3ARC35T_-MDL03	3890	73.4	3815	72.0	3945	74.4	3905	73.7	3965	74.8	53
3ARC45T_-MDL03	4370	82.5	4290	80.9	4430	83.6	4390	82.8	4455	84.1	53
2ARC27T_-MDL03	2335	70.8	2205	66.8	2335	70.8	2315	70.2	2330	70.6	33
2ARC35T_-MDL03	2665	80.8	2520	76.4	2665	80.8	2640	80.0	2655	80.5	33
2ARC45T_-MDL03	2990	90.6	2830	85.8	2995	90.8	2965	89.8	2985	90.5	33



**SternbergLighting**

ESTABLISHED 1923 / EMPLOYEE OWNED

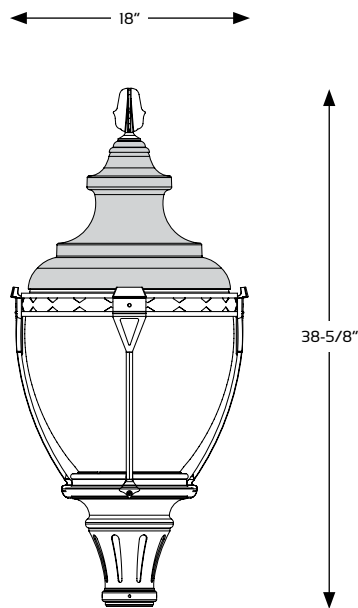
800-621-3376  
555 Lawrence Ave., Roselle, IL 60172  
info@sternberglighting.com  
www.sternberglighting.com

5/17 STERNBERG LIGHTING. ALL RIGHTS RESERVED. PRINTED IN THE USA.

# A880SRLED TOWN SQUARE SERIES

LED

## Fixtures



A880SRLED-5P

## Fitters

10-1/8" W  
10-3/8" H



**5P**  
Fits 3" OD  
x 3" tall  
tenon/pole

10-1/8" W  
10-1/8" H



**BD4**  
Fits 4" OD  
x 5" tall  
tenon/pole

10-1/8" W  
10-1/4" H



**BD5**  
Fits 5" OD  
x 6" tall  
tenon/pole

10-1/8" W  
11-3/4" H



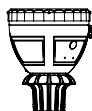
**BD7**  
Fits 7" OD  
x 1" tall  
tenon/pole

10-1/2" W  
15-3/4" H



**990**  
Fits 3" OD  
x 3" tall  
tenon/pole  
**994**  
Fits 4" OD  
x 3" tall  
tenon/pole

10-1/2" W  
13-1/8" H



**991**  
Fits 3" OD  
x 3" tall  
tenon/pole

10-1/2" W  
13-1/8" H



**992**  
Fits 3" OD  
x 3" tall  
tenon/pole

10-1/2" W  
15-3/4" H



**993**  
Fits 3" OD  
x 3" tall  
tenon/pole  
**995**  
Fits 4" OD  
x 3" tall  
tenon/pole

10-1/2" W  
11-3/8" H



**OL3**  
Fits 3" OD  
x 3" tall  
tenon/pole  
**OL4**  
Fits 4" OD  
x 3" tall  
tenon/pole

10" W  
3-1/4" H



**C2097**  
Fits 7" OD  
x 1" tall  
tenon/pole



**SternbergLighting**

ESTABLISHED 1923 / EMPLOYEE OWNED

800-621-3376  
555 Lawrence Ave., Roselle, IL 60172  
info@sternberglighting.com  
www.sternberglighting.com

5/17 STERNBERG LIGHTING. ALL RIGHTS RESERVED. PRINTED IN THE USA.

**E250LED-887B /  
E260LED-887B**

## EURO LED LIGHTED BOLLARD

## SPECIFICATIONS

### GENERAL

The models E250LED-887B/E260LED-887B decorative Euro lighted bollards are small scale, contemporary designs. They feature a multi-tube cylindrical body, decorative aluminum cage and dome roof.

### CONSTRUCTION

The bollard base shaft shall consist of a 5" diameter ASTM 6061 extruded aluminum tubing having a wall thickness of 1/4" and tempered to T6 condition. The anchor foot base shall be 11 7/8" diameter and made of heavy wall, 356 alloy cast aluminum and shall be vertically fastened to the bollard housing shaft. It shall have a 3/8" thick floor cast as an integral part of the base. The maximum overall height shall be 50". The luminaire shall be supplied with line-ground, line-neutral and neutral-ground electrical surge protection in accordance with IEEE/ANSI C62.41.2 guidelines. The bollard shall be U.L. or E.T.L. listed in U.S. and Canada.

The bollard housing shall be die-cast aluminum alloy for high tensile strength. Overall diameter shall be 13". The housing shall be an integral part of the base shaft to prevent water and dust entry into the enclosure. The E260LED-887B diffuser shall be made from vandal resistant clear (CA) or frosted acrylic (FA). The E250LED/FLD shall have a flat diffuse acrylic lens covering the LED arrays.

### DRIVER

The LED driver shall be securely mounted inside the fitter, for optimized driver performance and longevity. The LED driver shall be supplied with a quick-disconnect electrical connector on the power supply, providing easy power connections and fixture installation. The driver shall be a DC voltage output, constant current design, 50/60 HZ.

### LIGHT SOURCES

The luminaire shall use high output, high brightness LEDs. The LEDs shall be mounted in arrays, on printed circuit boards designed to maximize heat transfer to the heat sink surface. The LEDs shall be attached to the printed circuit board with not less than 90% pure silver to insure optimal electrical and thermal conductivity. The LEDs and printed circuit boards shall be protected from moisture and corrosion by a conformal coating of 1 to 3 mils. The LEDs and printed circuit board construction shall be environmentally friendly and 100% recyclable. They shall not contain lead, mercury or any other hazardous substances and shall be RoHS compliant. The LED life rating data shall be determined in accordance with IESNA LM-80.

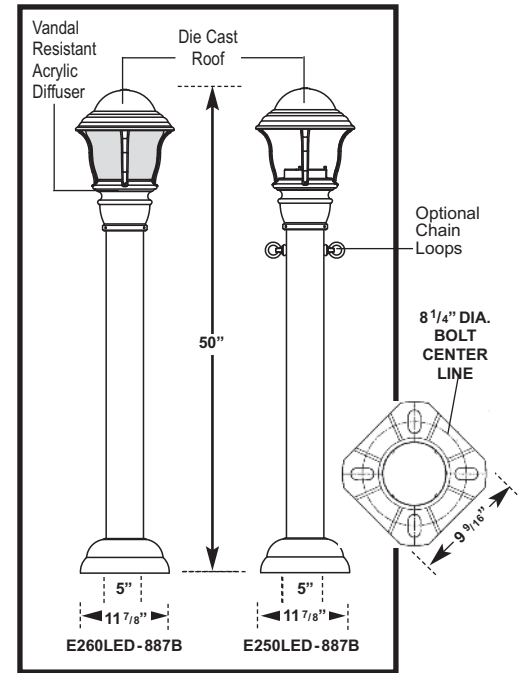
### FINISH

Prior to coating, the luminaire shall be chemically cleaned and etched in a 5-stage washing system which includes alkaline cleaning, rinsing, phosphoric etching, reverse-osmosis water rinsing and non-chrome sealing to ensure corrosion resistance and excellent adhesion for the finish coat. The finish coat shall be an electrostatically applied semi-gloss, super durable polyester powder coat, baked on at 400°F, to provide a durable, color retentive finish. \*The \_\_\_\_\_ (Verde Green or Swedish Iron) finish shall be hand-brushed using a 3-step process. \*(OPTION)

### INSTALLATION

Three, hot-dipped galvanized "L" type anchor bolts shall be provided with the post for bollard anchorage.

**WARRANTY** The luminaire shall be free from all defects in materials and workmanship for a period of seven (7) years from the date of manufacture. The luminaire manufacturer shall warrant the LED boards/system, during the stated warranty period, against failure defined as more than three simultaneous non-operating LEDs. The driver shall be warranted for seven (7) years.



See installation template for exact door position.

## BUILDING A PART NUMBER

## PART NUMBER SELECTIONS

BOLLARD MODEL LIGHT SOURCE DRIVER OPTIONS FINISH

E260FA-887B / 1RND45T3 / ML / FHD / VG

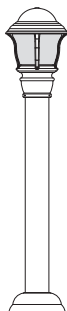
### MODELS\*

- E250LED
- E250LEDFLD
- E260LEDCA
- E260LEDFA

\* NOTE: For custom heights, designate height after bollard model. Example: E260-887B-64"

\*\* TO ORDER CHAIN: Specify total length of chain required for project.

\*\*\* 3ARC Only.



### DRIVERS

- ML-120-277
- MH-347-480\*\*\*

### OPTIONS

- PEC1
- PEC2
- FHD - Dual Fuses (Consult Factory)
- CL1
- Chain Loop\*\*
- CL2 Chain Loops 180°\*\*

### LIGHT SOURCES T5

- 3ARC60T5 50W, 6000K Type V Optics
- 3ARC45T5 50W, 4500K Type V Optics
- 3ARC35T5 50W, 3500K Type V Optics
- 1RND60T5 31W, 6000K Type V Optics
- 1RND45T5 31W, 4500K Type V Optics
- 1RND35T5 31W, 3500K Type V Optics

### LIGHT SOURCES T3

- 3ARC60T3 50W, 6000K Type III Optics
- 3ARC45T3 50W, 4500K Type III Optics
- 3ARC35T3 50W, 3500K Type III Optics
- 1RND60T3 31W, 6000K Type III Optics
- 1RND45T3 31W, 4500K Type III Optics
- 1RND35T3 31W, 3500K Type III Optics

### STANDARD FINISHES\*

- BKT Black Textured
- WHT White Textured
- PGT Park Green Textured
- ABZT Architectural Medium Bronze Textured
- DBT Dark Bronze Textured

\*Smooth Finishes are available upon request

### CUSTOM FINISHES

- OI Old Iron
- RT Rust
- WBR Weathered Brown
- CD Cedar
- WBK Weathered Black
- TT Two Tone

### STERNBERG SELECT FINISHES

- VG Verde Green
- SI Swedish Iron
- OWGT Old World Gray Textured



# WDGE1 LED

## Architectural Wall Sconce



Catalog  
Number

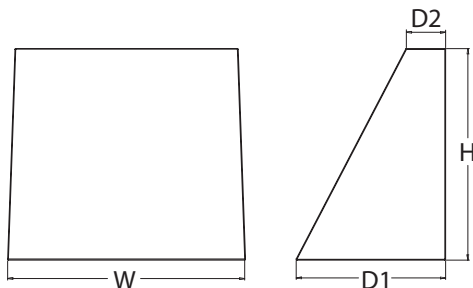
Notes

Type

Hit the Tab key or mouse over the page to see all interactive elements.

### Specifications

**Depth (D1):** 5.5"  
**Depth (D2):** 1.5"  
**Height:** 8"  
**Width:** 9"  
**Weight:** 9 lbs  
 (without options)



### Introduction

The WDGE1 LED family is designed to meet specifier's every wall-mounted lighting need in a widely accepted shape that blends with any architecture. The clean rectilinear design comes in four sizes with lumen packages ranging from 1,200 to 25,000 lumens, providing true site-wide solution.

WDGE1 delivers up to 2,000 lumens with a soft, non-pixelated light source, creating a visually comfortable environment. The compact size of WDGE1, with its integrated emergency battery backup option, makes it an ideal over-the-door wall-mounted lighting solution.

### WDGE LED Family Overview

Luminaire	Standard EM, 0°C	Cold EM, -20°C	Sensor	Lumens (4000K)					
				P1	P2	P3	P4	P5	P6
WDGE1 LED	4W	--	--	1,200	2,000	--	--	--	--
WDGE2 LED	10W	18W	Standalone / nLight	1,200	2,000	3,000	4,500	6,000	--
WDGE3 LED	15W	18W	Standalone / nLight	7,500	8,500	10,000	12,000	--	--
WDGE4 LED	--	--	Standalone / nLight	12,000	16,000	18,000	20,000	22,000	25,000

### Ordering Information

**EXAMPLE: WDGE1 LED P2 40K 80CRI VF MVOLT SRM PE DDBXD**

Series	Package	Color Temperature	CRI	Distribution	Voltage	Mounting
WDGE1 LED	P1	27K 2700K	80CRI	VF Visual comfort forward throw	MVOLT 347 <sup>2</sup>	<b>Shipped included</b> SRM Surface mounting bracket ICW Indirect Canopy/Ceiling Washer bracket (dry/damp locations only) <sup>5</sup> <b>Shipped separately</b> AWS 3/8inch Architectural wall spacer BBW Surface-mounted back box PBBW Premium surface-mounted back box (top, left, right conduit entry)
	P2	30K 3000K	90CRI	VW Visual comfort wide		
		35K 3500K				
		40K 4000K				
		50K <sup>1</sup> 5000K				

Options	Finish
E4WH <sup>3</sup> Emergency battery backup, CEC compliant (4W, 0°C min)	DDBXD Dark bronze
PE <sup>4</sup> Photocell, Button Type	DBLXD Black
DS Dual switching ( comes with 2 drivers and 2 light engines; see page 3 for details)	DNAXD Natural aluminum
DMG 0-10V dimming wires pulled outside fixture (for use with an external control, ordered separately)	DWHXD White
BCE Bottom conduit entry for premium back box (PBBW). Total of 4 entry points.	DSSXD Sandstone
	DDBTXD Textured dark bronze
	DBLTXD Textured black
	DNATXD Textured natural aluminum
	DWHGXD Textured white
	DSSTXD Textured sandstone

### Accessories

Ordered and shipped separately.

WDGEAWS DDBXD U	WDGE 3/8inch Architectural Wall Spacer (specify finish)
WDGE1PBBW DDBXD U	WDGE1 Premium surface-mounted back box (specify finish)
WSBBW DDBXD U	Surface - mounted back box (specify finish)

### NOTES

- 50K not available in 90CRI.
- 347V not available with E4WH, DS or PE.
- E4WH not available with PE or DS.
- PE not available with DS.
- Not qualified for DLC. Not available with E4WH.



COMMERCIAL OUTDOOR

One Lithonia Way • Conyers, Georgia 30012 • Phone: 1-800-705-SERV (7378) • [www.lithonia.com](http://www.lithonia.com)  
 © 2019-2020 Acuity Brands Lighting, Inc. All rights reserved.

WDGE1 LED  
 Rev. 04/15/20

## Performance Data

### Lumen Output

Lumen values are from photometric tests performed in accordance with IESNA LM-79-08. Data is considered to be representative of the configurations shown, within the tolerances allowed by Lighting Facts. Contact factory for performance data on any configurations not shown here.

Performance Package	System Watts	Dist. Type	27K (2700K, 80 CRI)					30K (3000K, 80 CRI)					35K (3500K, 80 CRI)					40K (4000K, 80 CRI)					50K (5000K, 80 CRI)				
			Lumens	LPW	B	U	G	Lumens	LPW	B	U	G	Lumens	LPW	B	U	G	Lumens	LPW	B	U	G	Lumens	LPW	B	U	G
P1	10W	VF	1,120	112	0	0	0	1,161	116	0	0	0	1,194	119	0	0	0	1,227	123	0	0	0	1,235	123	0	0	0
		VW	1,122	112	0	0	0	1,163	116	0	0	0	1,196	120	0	0	0	1,229	123	0	0	0	1,237	124	0	0	0
P2	15W	VF	1,806	120	1	0	0	1,872	125	1	0	0	1,925	128	1	0	0	1,978	132	1	0	0	1,992	133	1	0	0
		VW	1,809	120	1	0	0	1,876	125	1	0	0	1,929	128	1	0	0	1,982	132	1	0	0	1,996	133	1	0	0

### Electrical Load

Performance Package	System Watts	Current (A)				
		120V	208V	240V	277V	347V
P1	10W	0.082	0.049	0.043	0.038	--
	13W	--	--	--	--	0.046
P2	15W	0.132	0.081	0.072	0.064	--
	18W	--	--	--	--	0.056

### Lumen Multiplier for 90CRI

CCT	Multiplier
27K	0.845
30K	0.867
35K	0.845
40K	0.885
50K	0.898

### Lumen Output in Emergency Mode (4000K, 80 CRI)

Option	Dist. Type	Lumens
E4WH	VF	646
	VW	647

### Lumen Ambient Temperature (LAT) Multipliers

Use these factors to determine relative lumen output for average ambient temperatures from 0-40°C (32-104°F).

Ambient		Lumen Multiplier
0°C	32°F	1.03
10°C	50°F	1.02
20°C	68°F	1.01
25°C	77°F	1.00
30°C	86°F	0.99
40°C	104°F	0.98

### Projected LED Lumen Maintenance

Data references the extrapolated performance projections for the platforms noted in a 25°C ambient, based on 10,000 hours of LED testing (tested per IESNA LM-80-08 and projected per IESNA TM-21-11).

To calculate LLF, use the lumen maintenance factor that corresponds to the desired number of operating hours below. For other lumen maintenance values, contact factory.

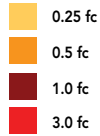
Operating Hours	0	25,000	50,000	100,000
Lumen Maintenance Factor	1.0	>0.96	>0.95	>0.91



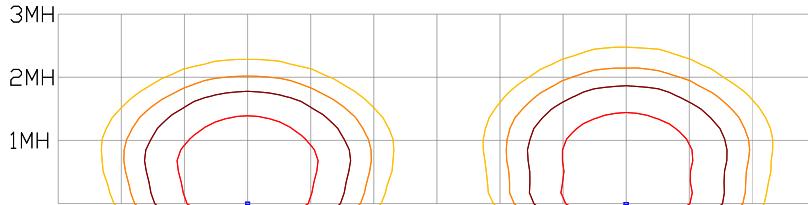
## Photometric Diagrams

To see complete photometric reports or download .ies files for this product, visit the Lithonia Lighting WDGE LED homepage.  
Tested in accordance with IESNA LM-79 and LM-80 standards.

### LEGEND



MH = 8ft  
Grid = 8ft x 8ft



WDGE1 LED P2 40K 80CRI VW

WDGE1 LED P2 40K 80CRI VF

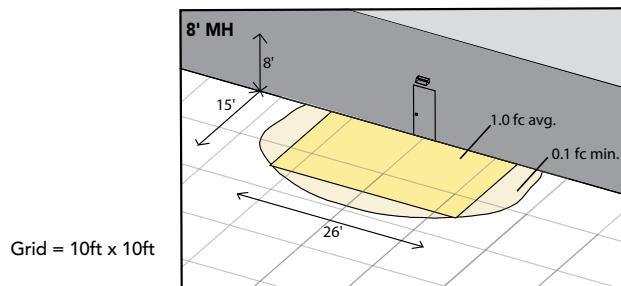
## Emergency Egress Options

### Emergency Battery Backup

The emergency battery backup is integral to the luminaire — no external housing required! This design provides reliable emergency operation while maintaining the aesthetics of the product. All emergency battery backup configurations include an independent secondary driver with an integral relay to immediately detect loss of normal power and automatically energize the luminaire. The emergency battery will power the luminaire for a minimum duration of 90 minutes (maximum duration of three hours) from the time normal power is lost and maintain a minimum of 60% of the light output at the end of 90 minutes.

Applicable codes: NFPA 70/NEC – section 700.16, NFPA 101 Life Safety Code Section 7.9

The example below shows illuminance of 1 fc average and 0.1 fc minimum in emergency mode with E4WH and VF distribution.

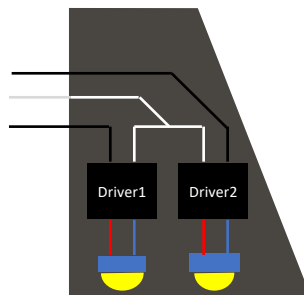


WDGE1 LED xx 40K 80CRI VF MVOLT E4WH

### Dual Switching (DS) Option

The dual switching option offers operational redundancy that certain codes require. With this option the luminaire comes integrated with two drivers and two light engines. These work completely independent to each other so that a failure of any individual component does not cause the whole luminaire to go dark. This option is typically used with a back generator or inverter providing emergency power.

Applicable codes: NFPA 70/NEC – section 700.16, NFPA 101 Life Safety Code Section 7.9





**E4WH – 4W Emergency Battery Backup**

D = 5.5"

H = 8"

W = 9"

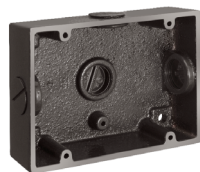


**PBBW – Premium Back Box**

D = 1.75"

H = 8"

W = 9"



**BBW – Standard Back Box**

D = 1.5"

H = 4"

W = 5.5"



**AWS – 3/8inch Architectural Wall Spacer**

D = 0.38"

H = 4.4"

W = 7.5"

## FEATURES & SPECIFICATIONS

### INTENDED USE

Common architectural look, with clean rectilinear shape, of the WDGE LED was designed to blend with any type of construction, whether it be tilt-up, frame or brick. Applications include commercial offices, warehouses, hospitals, schools, malls, restaurants, and other commercial buildings.

### CONSTRUCTION

The single-piece die-cast aluminum housing integrates secondary heat sinks to optimize thermal transfer from the internal light engine heat sinks and promote long life. The driver is mounted in direct contact with the casting for a low operating temperature and long life. The die-cast door frame is fully gasketed with a one-piece solid silicone gasket to keep out moisture and dust, providing an IP66 rating for the luminaire.

### FINISH

Exterior painted parts are protected by a zinc-infused Super Durable TGIC thermoset powder coat finish that provides superior resistance to corrosion and weathering. A tightly controlled multi-stage process ensures a 3 mils thickness for a finish that can withstand extreme climate changes without cracking or peeling. Standard Super Durable colors include dark bronze, black, natural aluminum, sandstone and white. Available in textured and non-textured finishes.

### OPTICS

Well crafted reflector optics allow the light engine to be recessed within the luminaire, providing visual comfort, superior distribution, uniformity, and spacing in wall-mount applications. The WDGE LED has zero uplight and qualifies as a Nighttime Friendly™ product, meaning it is consistent with the LEED® and Green Globes™ criteria for eliminating wasteful uplight.

### ELECTRICAL

Light engine consists of high-efficacy LEDs mounted to metal-core circuit boards to maximize heat dissipation and promote long life (up to L91/100,000 hours at 25°C). The electronic driver has a power factor of >90%, THD <20%. Luminaire comes with built in 6kV surge protection, which meets a minimum Category C low exposure (per ANSI/IEEE C62.41.2).

### INSTALLATION

A universal mounting plate with integral mounting support arms allows the fixture to hinge down for easy access while making wiring connections. The 3/8" Architectural Wall Spacer (AWS) can be used to create a floating appearance or to accommodate small imperfections in the wall surface. The ICW option can be used to mount the luminaire inverted for indirect lighting in dry and damp locations. Design can withstand up to a 1.5 G vibration load rating per ANSI C136.31.

### LISTINGS

CSA certified to U.S. and Canadian standards. Luminaire is IP66 rated. PIR options are rated for wet location. Rated for -40°C minimum ambient. DesignLights Consortium® (DLC) Premium qualified product and DLC qualified product. Not all versions of this product may be DLC Premium qualified or DLC qualified. Please check the DLC Qualified Products List at [www.designlights.org/QPL](http://www.designlights.org/QPL) to confirm which versions are qualified. International Dark-Sky Association (IDA) Fixture Seal of Approval (FSA) is available for all products on this page utilizing 2700K and 3000K color temperature only and SRM mounting only.

### WARRANTY

5-year limited warranty. Complete warranty terms located at: [www.acuitybrands.com/support/customer-support/terms-and-conditions](http://www.acuitybrands.com/support/customer-support/terms-and-conditions)

**Note:** Actual performance may differ as a result of end-user environment and application. All values are design or typical values, measured under laboratory conditions at 25 °C. Specifications subject to change without notice.