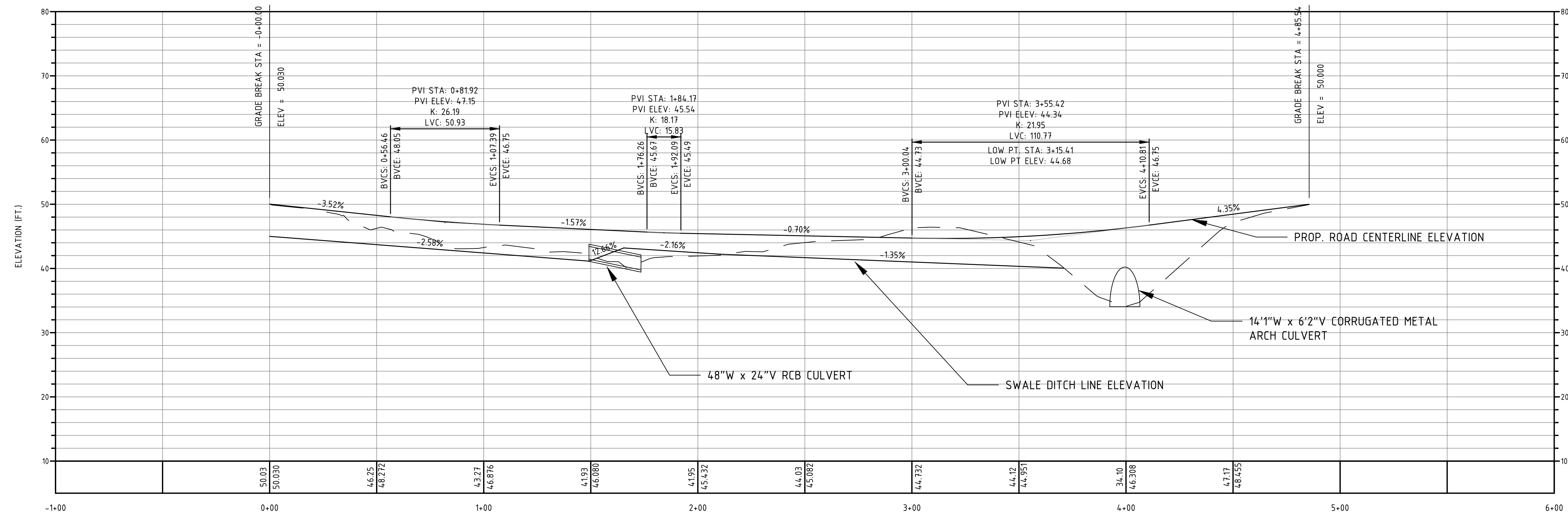
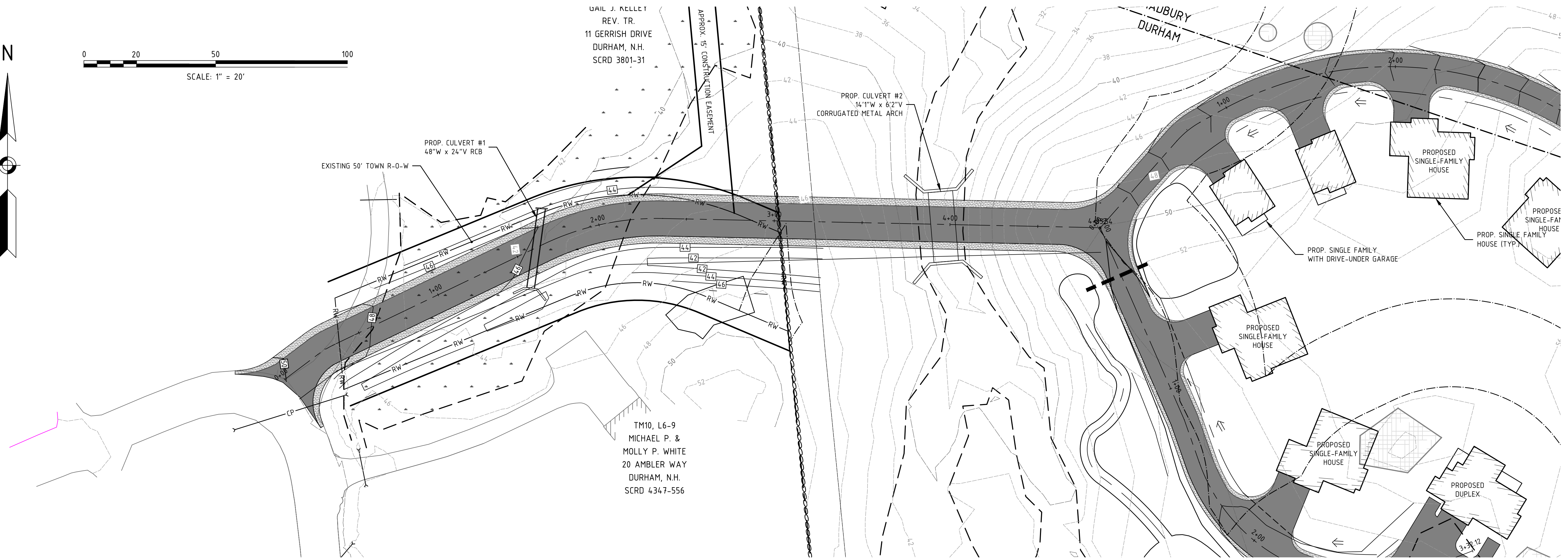


0 20 50 100
 SCALE: 1" = 20'



GERRISH EXTENSION PROFILE

VERTICAL EXAGGERATION: 3
 HORIZONTAL SCALE: 1"=30'
 VERTICAL SCALE: 1"=10'

SEAL

DATE ISSUED: 4/20/20
 SCALE: 1"=60'
 DESIGNED BY: MJS
 DRAWN BY: MJS
 APPROVED BY: MJS
 DWE FILE: 19063 CIVIL.dwg

GERRISH EXTENSION
 PLAN AND PROFILE

prepared for
 MULHERN
 MAP 10, LOT 8-6
 93 BAGDAD ROAD
 DURHAM, NH 03824

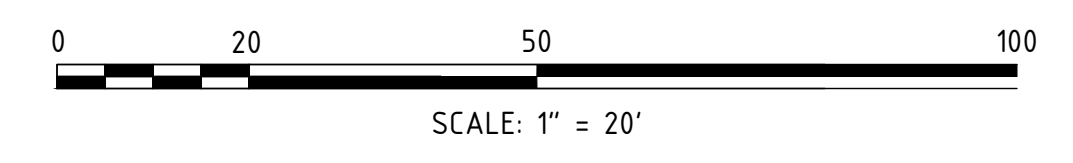
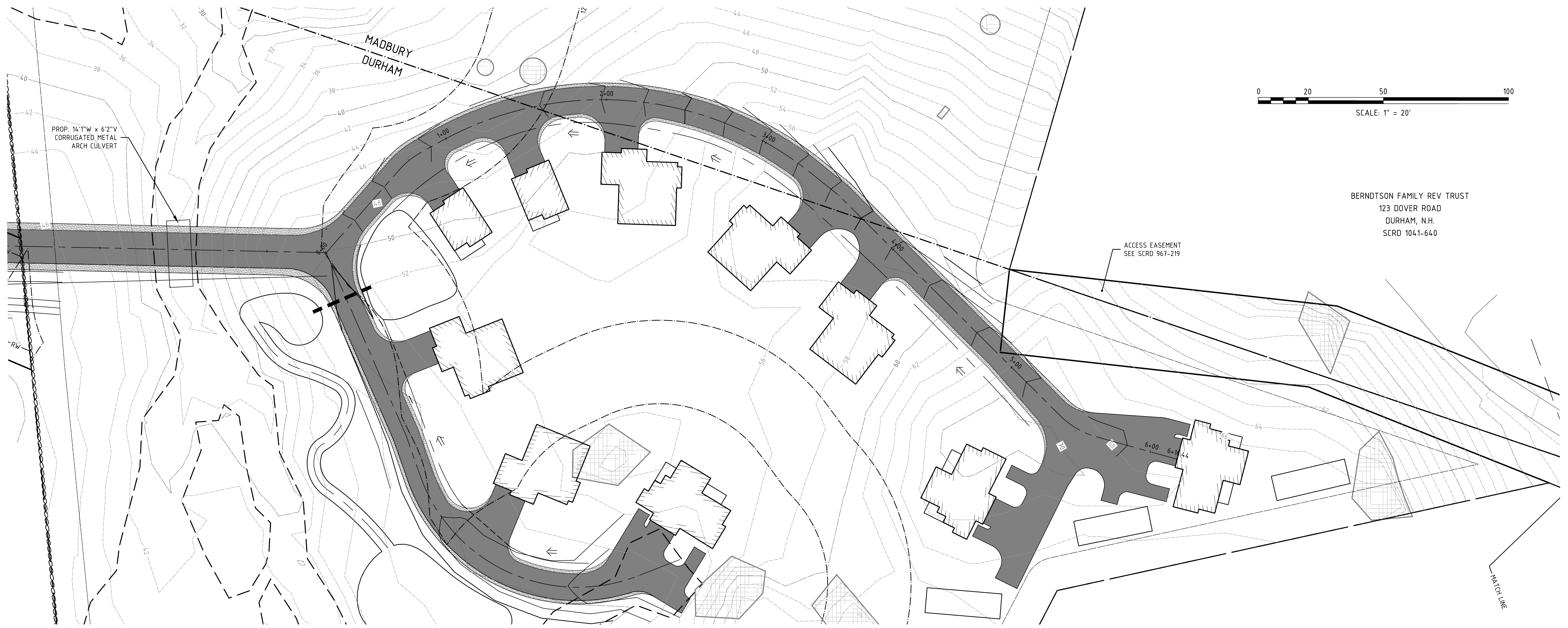
MJS ENGINEERING, P.C.
 CIVIL • STRUCTURAL • ENVIRONMENTAL

5 Railroad St., P.O. Box 359
 Newmarket, NH 03857
 Phone: (603) 659-4979 Fax: (603) 659-4427
 Email: mjs@engr.com

JOB: 19-063

PP1

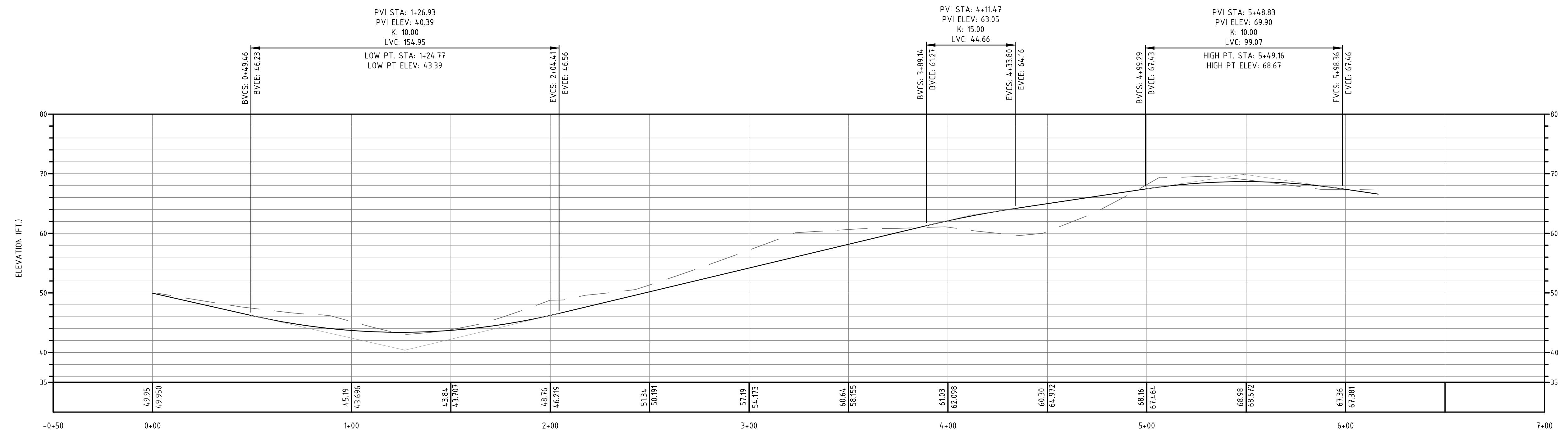
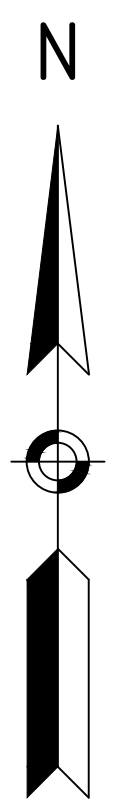
NO.	REVISIONS	DATE	INT.
0	INITIAL SUBMISSION TO REG MEETING	4/20/20	MJS



BERNOTSON FAMILY REV TRUST
123 DOVER ROAD
DURHAM, N.H.
SCRD 1041-640

ACCESS EASEMENT
SEE SCRD 967-219

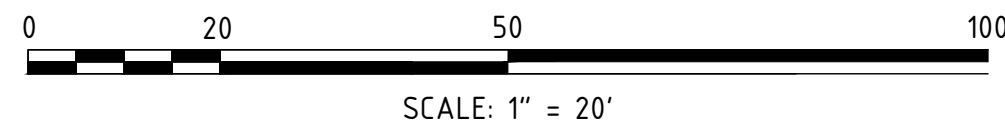
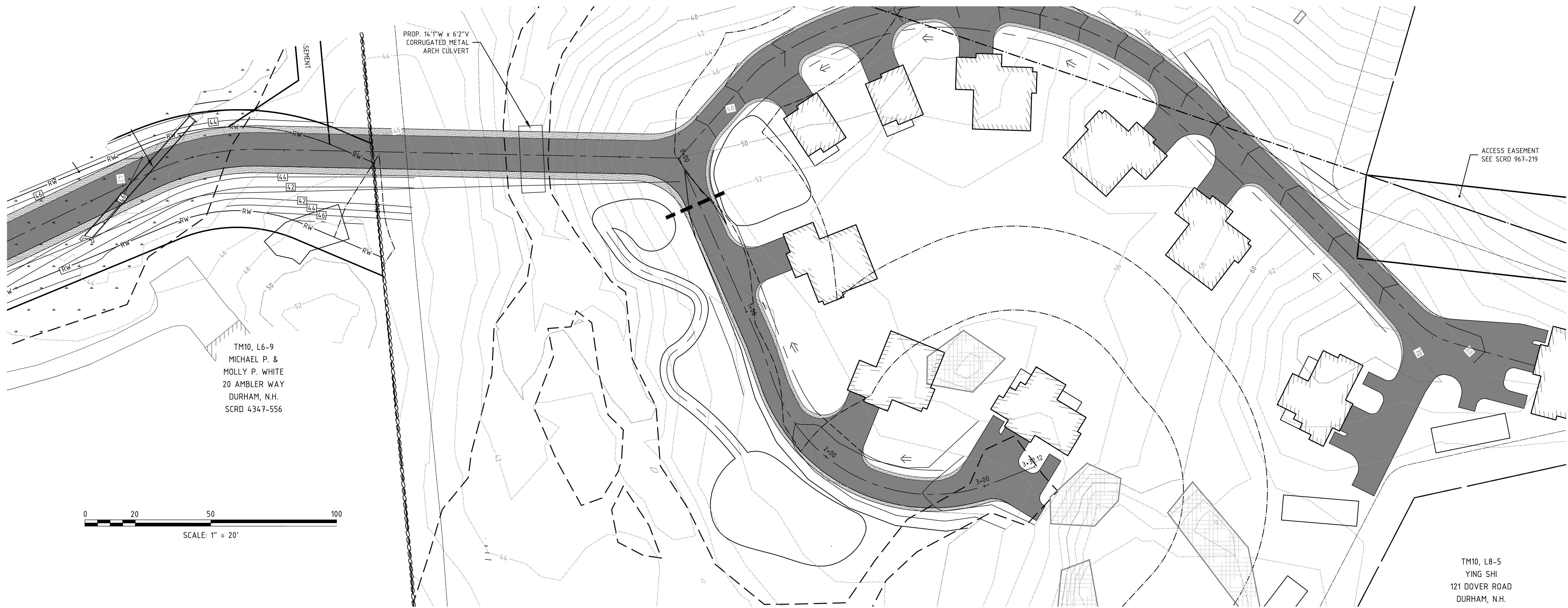
MATCH LINE



NORTH DRIVEWAY PROFILE

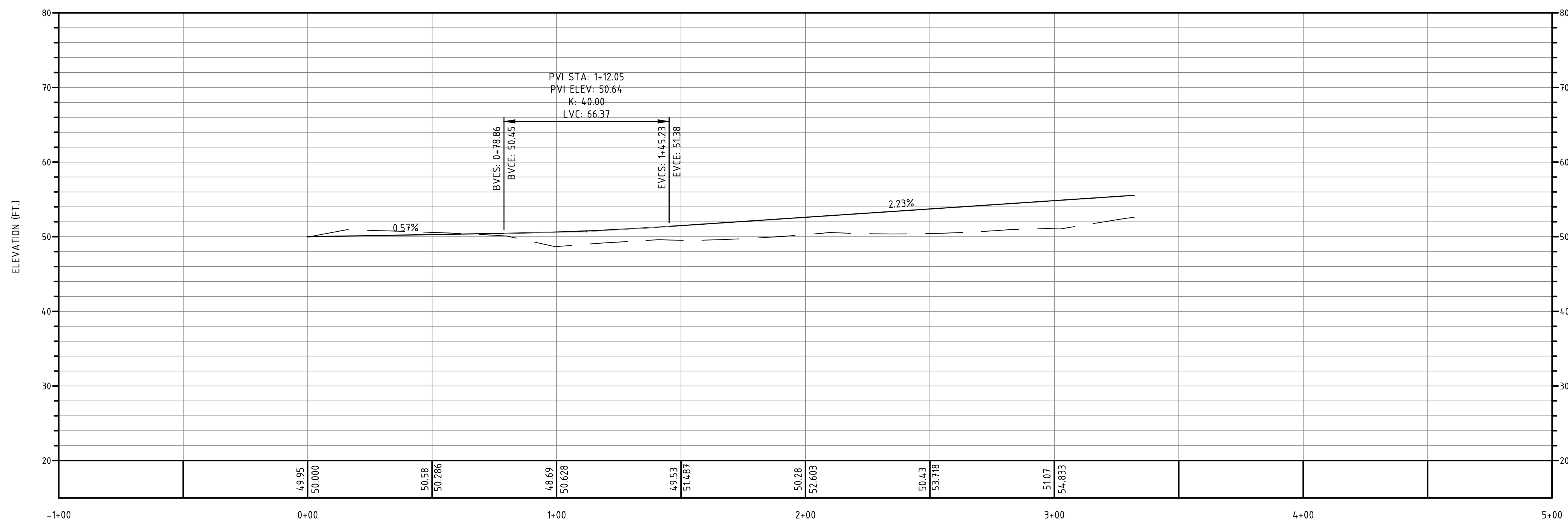
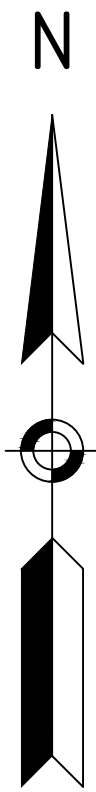
VERTICAL EXAGGERATION: 3
HORIZONTAL SCALE: 1"=30'
VERTICAL SCALE: 1"=10'

DATE ISSUED: 4/20/20		SCALE: 1"=60'	
DESIGNED BY: MJS		DRAWN BY: MJS	
APPROVED BY: MJS		DWF FILE: 19063_Civil.dwg	
NO.		REVISIONS	
0.		INITIAL SUBMISSION TO REG MEETING	
NO.		DATE	
NO.		INT.	
<p>NORTH DRIVEWAY PLAN AND PROFILE prepared for MULHERN MAP 10, LOT 8-6 93 BAGDAD ROAD DURHAM, NH 03824</p>			
<p>MJS ENGINEERING, P.C. CIVIL • STRUCTURAL • ENVIRONMENTAL 5 Railroad St., P.O. Box 359 Newmarket, NH 03857 Phone: (603) 659-4979 Fax: (603) 659-4427 Email: mjs@mjsengineering.com</p>			
JOB: 19-063			
PP3			



TM10, L6-9
MICHAEL P. &
MOLLY P. WHITE
20 AMBLER WAY
DURHAM, N.H.
SCRD 4347-556

TM10, L8-5
YING SHI
121 DOVER ROAD
DURHAM, N.H.



SOUTH DRIVEWAY PROFILE

VERTICAL EXAGGERATION: 3
HORIZONTAL SCALE: 1"=30'
VERTICAL SCALE: 1"=10'

SEAL

DATE ISSUED: 4/20/20
SCALE: 1"=60'
DESIGNED BY: MJS
DRAWN BY: MJS
APPROVED BY: MJS
DWE FILE: 19063 CIVIL.dwg

**SOUTH DRIVEWAY
PLAN AND PROFILE**
prepared for
MULHERN
MAP 10, LOT 8-6
93 BAGDAD ROAD
DURHAM, NH 03824

JOB: 19-063

PP2

NO.	REVISIONS	DATE	INT.
0	INITIAL SUBMISSION TO REG MEETING	4/20/20	MCS