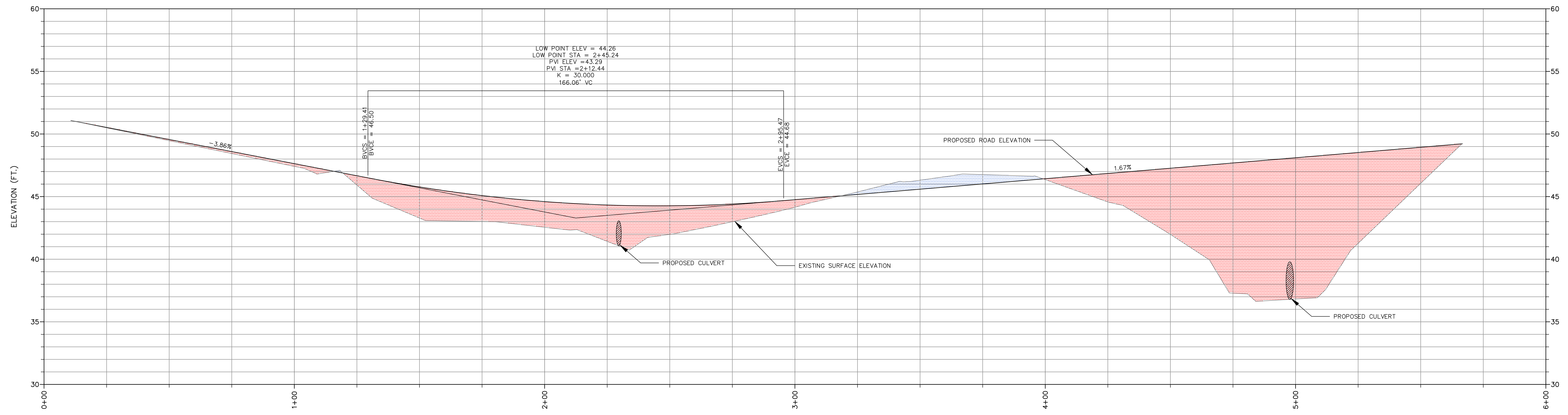
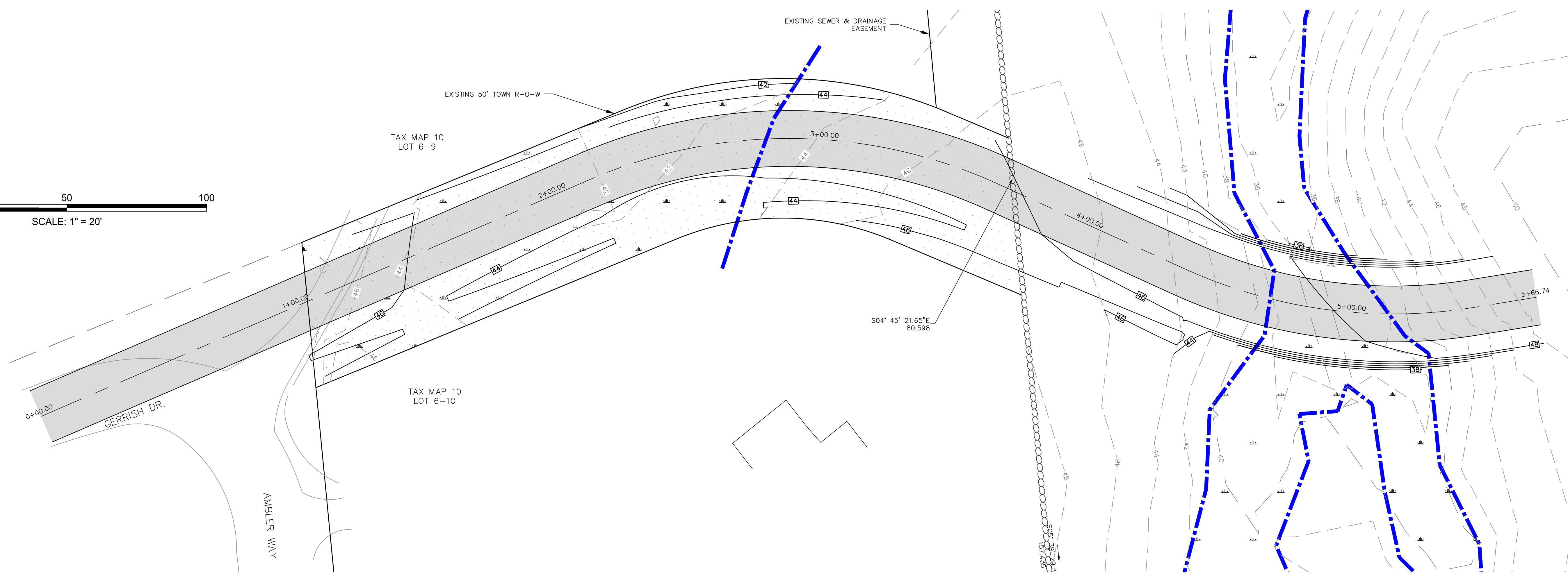
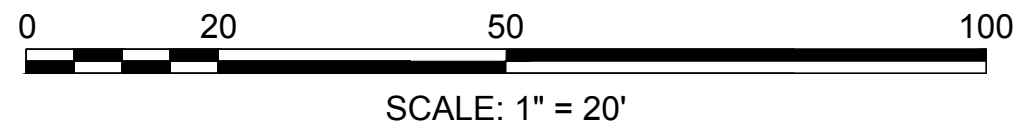
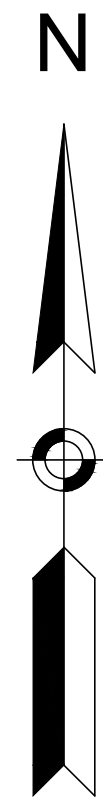


Drawing Name: P:\19063\19-063\Initial\Map\19063_C4WG_ALT.dwg
Wed, 08 Jan 2020 - 2:34pm



PROPOSED ROAD PROFILE
SCALE: 1"=20'H 1"=4'V

NO.	REVISIONS	DATE	INT.
0.	INITIAL SUBMISSION TO TOWN OF DURHAM	1/18/20	MCS

SEAL

DATE: 1/18/20
SCALE: 1"=20'
DESIGNED BY: MJS
DRAWN BY: MCS
APPROVED BY: MJS
DWG FILE: 19063_C4WG_ALT.dwg

PRELIMINARY PLAN & PROFILE
prepared for
MICHAEL & MARTHA MULHERN
MAP 10, LOT 8-6
91 BAGDAD ROAD
DURHAM, NH 03824

MJS ENGINEERING, P.C.
CIVIL • STRUCTURAL • ENVIRONMENTAL
5 RAILROAD ST., SUITE 309
DURHAM, NH 03824
PHONE: (603) 659-4979, FAX: (603) 659-6627
E-MAIL: MJS@MJS-ENGINEERING.COM

JOB: 19-063

C4