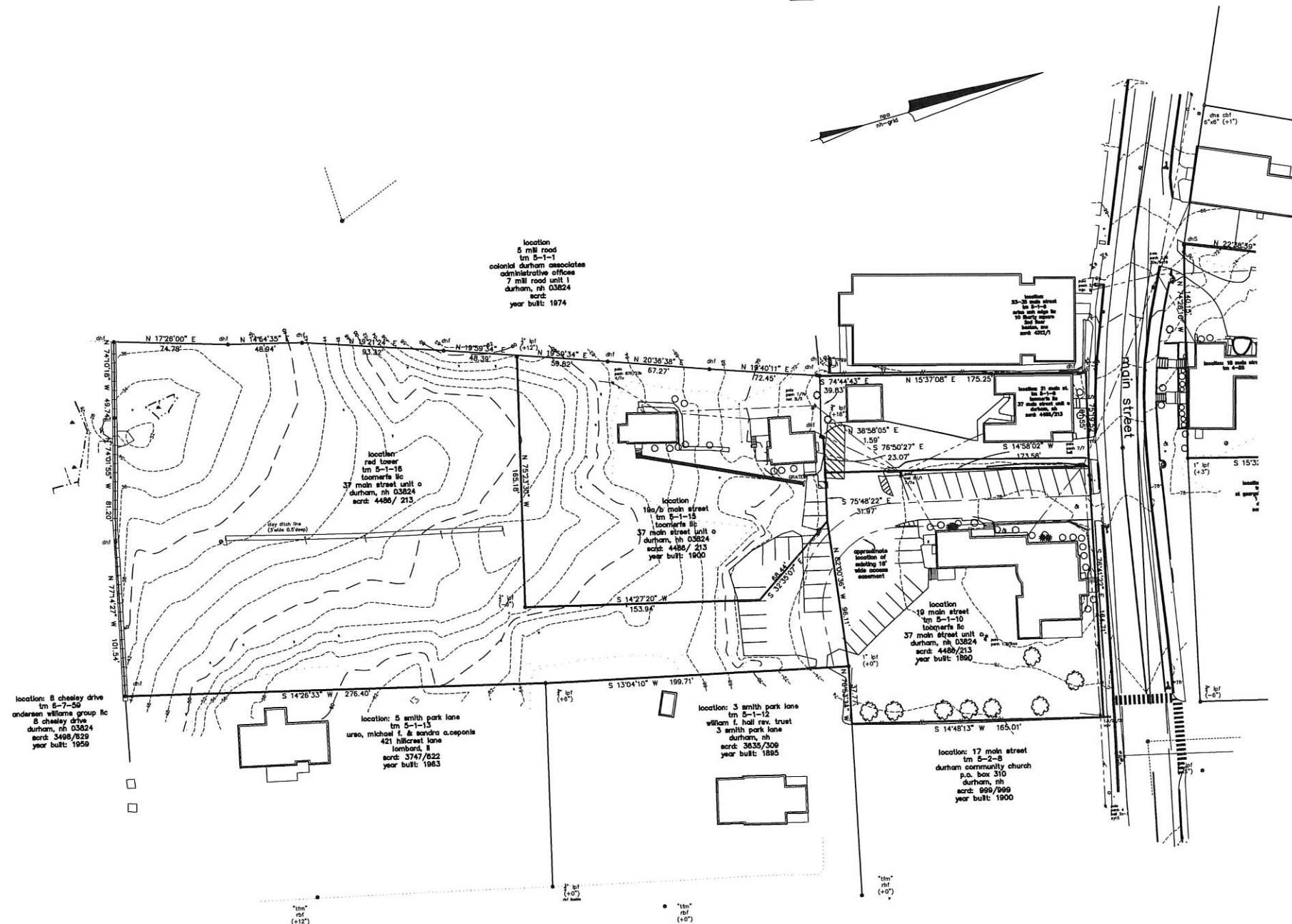




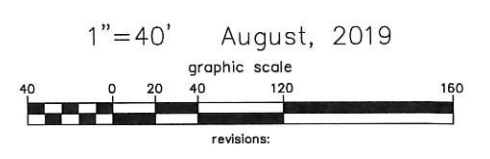
reserved registry of deeds



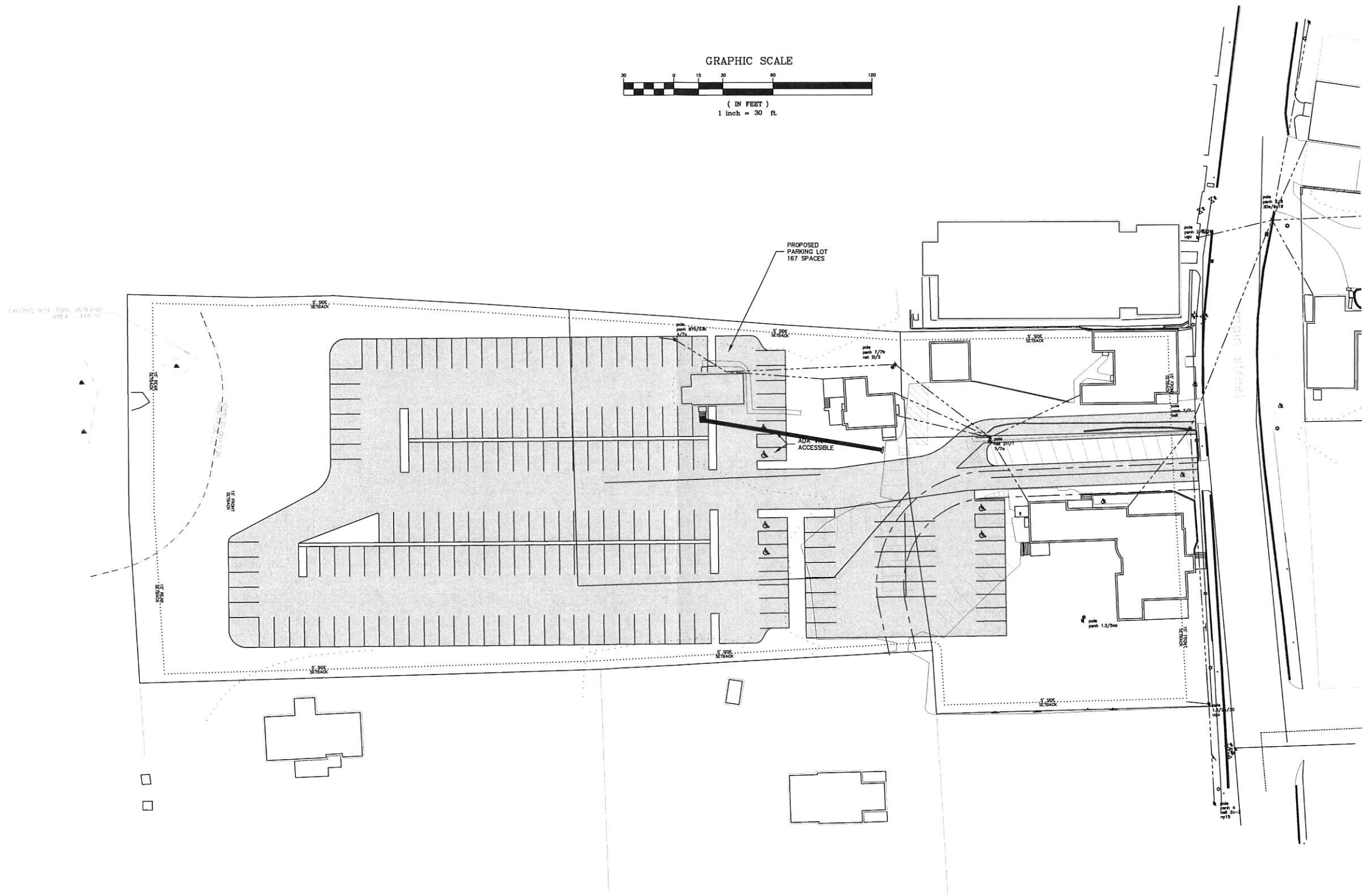
- NOTES:
1. Total parcel area: Map 5, Lots 1-9,1-10,1-15,1-16 3.2 acres
 2. The parcel is zoned Church Hill Dirstrict. Tax map 5 Lots 1-9 & 1-10 are within the historic overlay district.
 3. Minimum lot requirements: lot size = 5000 SF.
 4. Building setbacks:
Front = 15' (all Streets)
Side = 5'
Rear = 15'
Maximum building height: 30'
Maximum Impervious Surface Ratio 80%
 6. The lots are serviced by the municipal water and sewer system.
 7. The proposed lot is not located within the 100 year flood zone.

Tax Map & Lot Number
5-1-9,1-10,1-15,1-16
OWNER OF RECORD:
TOOMERFS, LLC
37 MAIN STREET, UNIT 0
DURHAM, NH.

existing features plan
19-21 main street
durham, strafford county, nh
for: Toomerfs, LLC



FILE NO.#
PLAN NO.#
DWG. NO.#
F.B. NO. #



JOB: 18-041

C1

PRELIM. SITE PLAN OPTION 3
 prepared for
 PETER MURPHY
 TAX MAP 5, LOTS 1-9 AND 1-10
 19 MAIN ST AND 21 MAIN ST DURHAM, NH

DATE: 2/20/19
 SCALE: 1"=30'
 DESIGNED BY:
 DRAWN BY:
 APPROVED BY:
 DWG FILE: 18-041 Civil B.dwg

SEAL

NO.

REVISIONS

DATE

INT.