

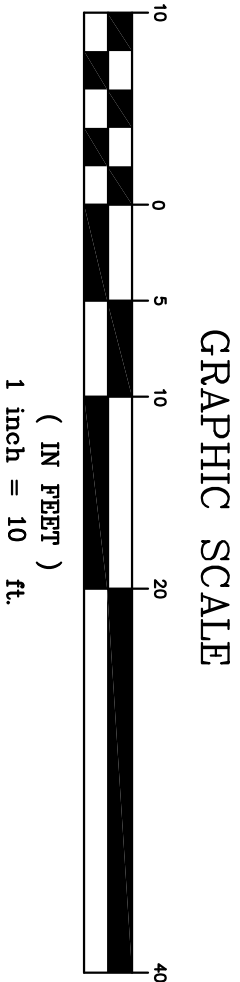
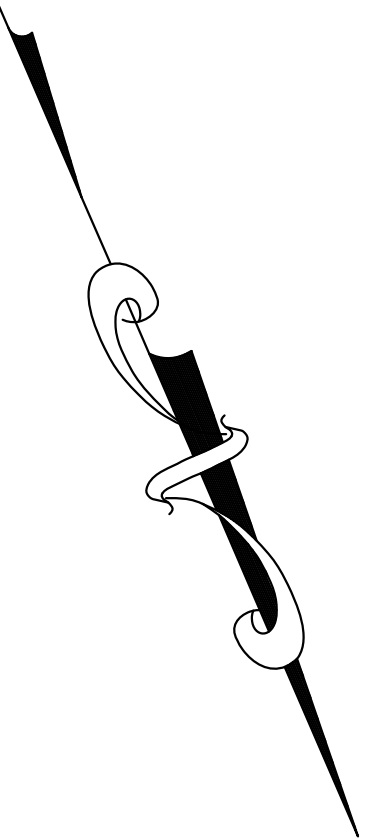
- NOTES:
1. TOTAL PARCEL AREA: 14,219 S.F. / 0.33 ACRES
 2. PARCEL IS ZONED CB - CENTRAL BUSINESS
 3. THE LOTS ARE SERVED BY THE MUNICIPAL WATER AND SEWER SYSTEM. AS SHOWN ON THE FLOOD INSURANCE RATE MAP DATED 5/17/05 COMMUNITY PANEL 33017003180.
 4. PARCEL MAYBE SUBJECT BUT NOT LIMITED TO THE FOLLOWING EASEMENTS OR RIGHTS: HIGHWAY EASEMENT, SEE 1103/253
 5. SEWER ENTRY APPLICATION AND CONTRACT, SEE SPRO 619/148
- ADDITIONAL NOTES:
- I CERTIFY THAT THIS SURVEY PLAT IS NOT A SUBDIVISION PURSUANT TO THIS TITLE AND THAT THE LOTS ARE NOT TO BE SEPARATELY MARKETED OR TRANSFERRED. I HAVE SHOWN ALL EASEMENTS AND RIGHTS OF WAY AND HAVE SHOWN THE LOTS IN ACCORDANCE WITH THE FLOOD INSURANCE RATE MAP DATED 5/17/05 COMMUNITY PANEL 33017003180. I HEREBY CERTIFY THAT THE IMPROVEMENTS SHOWN HEREON ACCURATELY REPRESENT THE ACTUAL CONDITIONS OF THE LAND AND THAT THE UNIT SHOWN IS SUBSTANTIALLY COMPLETE.

LOCATION: 13 JENKINS COURT
TM 2-14-3
GARLAND PROPERTIES, LLC
263 CENTRAL AVENUE
DOVER, NH 03820
SPRD-3736/985

LOCATION: 60 MAIN STREET
UNIVERSITY OF NEW HAMPSHIRE
PRESIDENT'S OFFICE
DURHAM, NH 03824
SPRD-4244/383

LOCATION: 50-54 MAIN STREET
TM 4-7
ARROW 5054 PROPERTIES LLC
DURHAM, NH 03824
SPRD-4325/371

LOCATION: 2-10 JENKINS COURT
TM 4-8
6 JENKINS COURT LLC
DURHAM, NH 03824
SPRD-3702/76



NO.	REVISIONS	DATE	INT.
0.	INITIAL SUBMISSION	6/25/19	MCS

SEAL

DATE: 6/24/19
SCALE: 1" = 10'
DESIGNED BY: MCS
DRAWN BY: MCS
APPROVED BY: X
DWG FILE: 19-024 SubdivA.dwg

CONDOMINIUM SITE PLAN

prepared for
60 MAIN REAL ESTATE, LLC
TAX MAP 2, LOTS 14-4
56, 58, & 62 MAIN STREET AND 3 & 5 JENKINS COURT
DURHAM, NH

MJS

ENGINEERING, P.C.

CIVIL • STRUCTURAL • ENVIRONMENTAL

5 RAILROAD ST., P.O. Box 359
NEWHAMPTON, NH 03857
PHONE: (603) 659-4579, FAX: (603) 659-4627
E-MAIL: MJS@MJS-ENGINEERING.COM

JOB: 19-024

CND