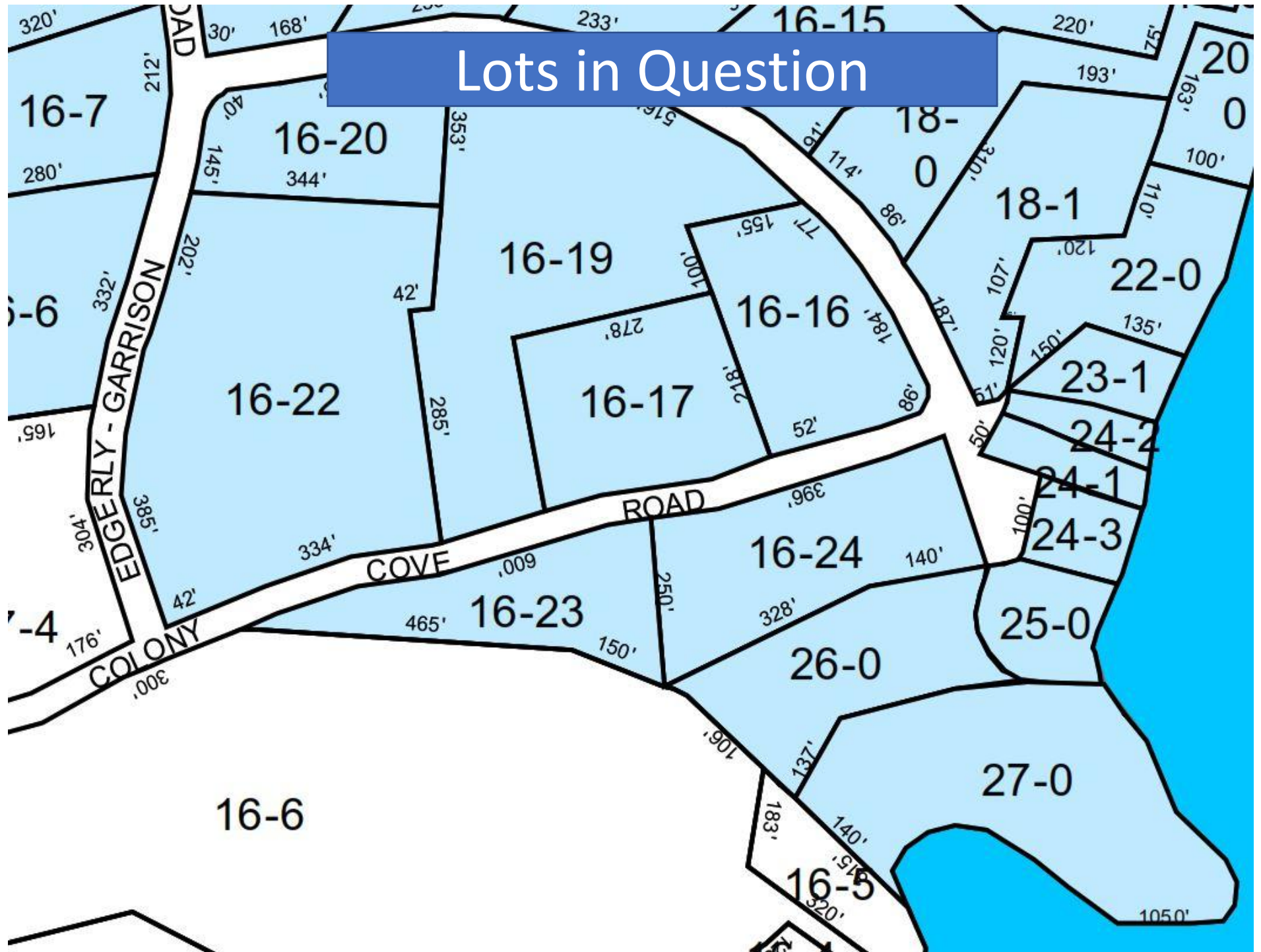
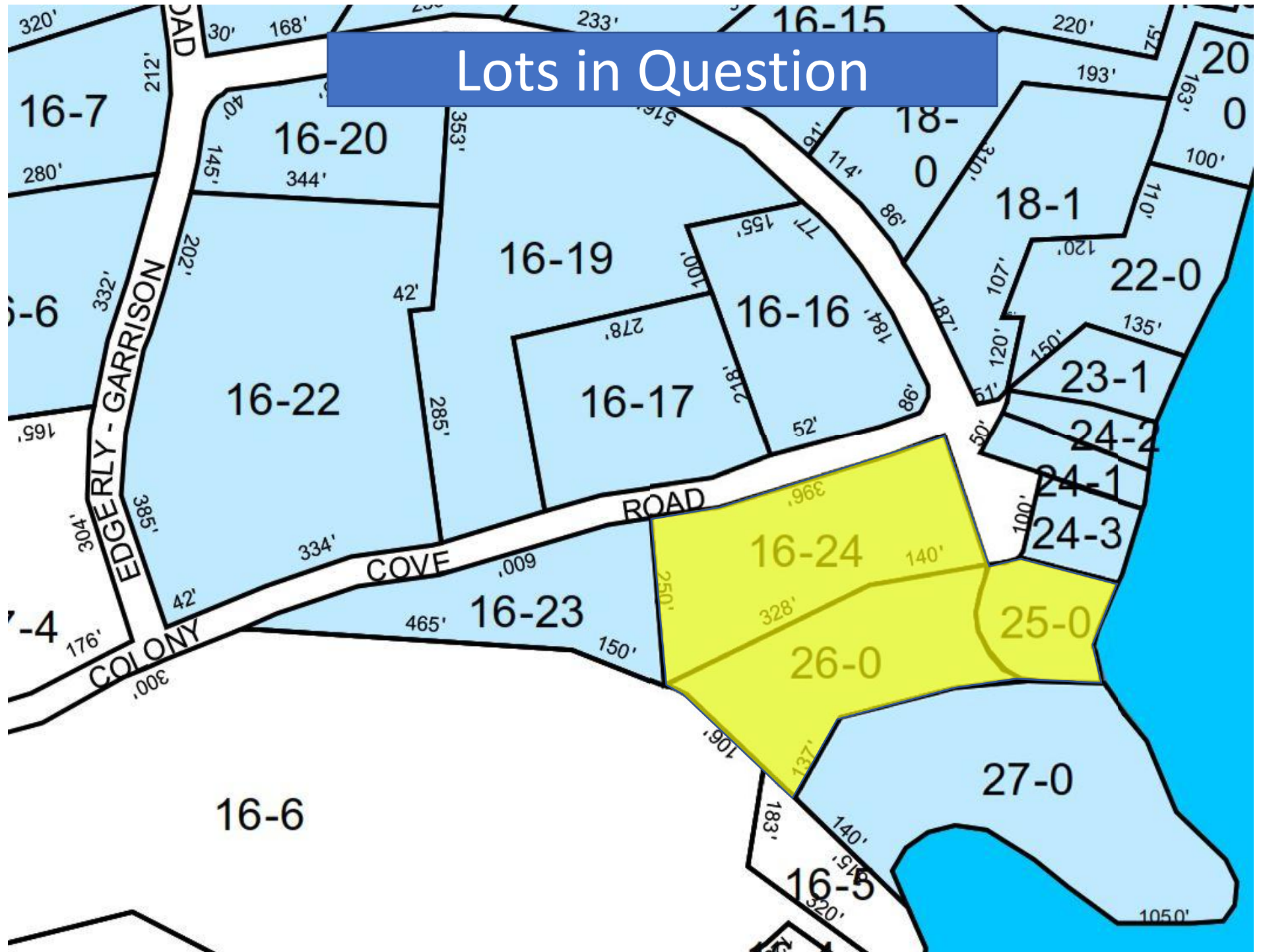


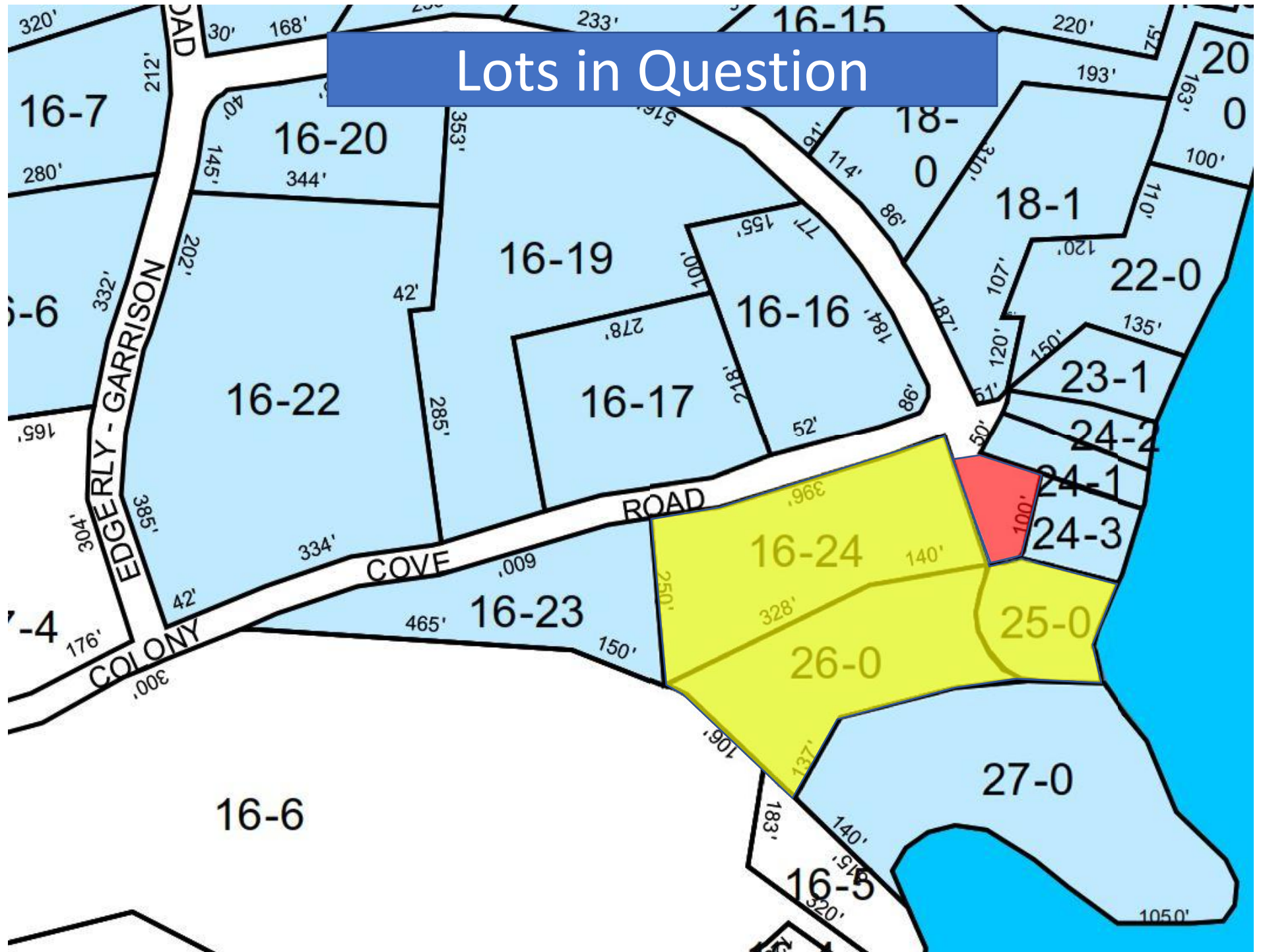
Lots in Question



Lots in Question



Lots in Question



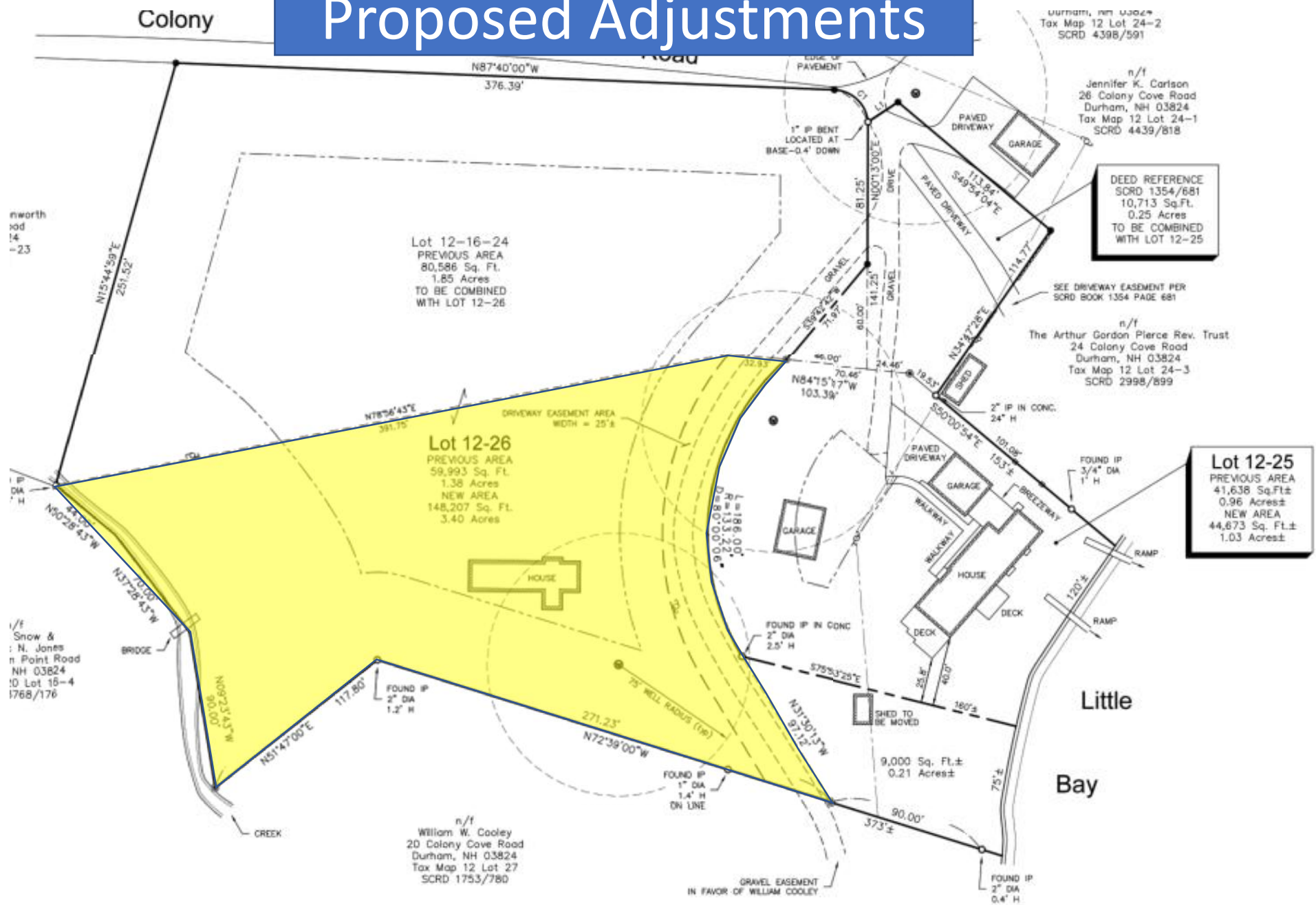
The map shows a residential neighborhood with several lots. A road, 'EDGERLY - GARRISON ROAD', runs diagonally across the center. To the left of the road are lots 16-7, 16-20, 16-19, 16-16, 16-17, 16-22, and 16-23. To the right are lots 18-0, 18-1, 22-0, 23-1, 24-2, 24-1, 24-3, and 27-0. A yellow area, labeled 'Our house', is located south of the road, adjacent to lots 16-17, 16-16, and 16-23. A red area, labeled 'Mom's House', is a small lot located south of the road, adjacent to lot 24-1. A blue box at the top of the map contains the text 'Lots in Question'.

Scenic Field

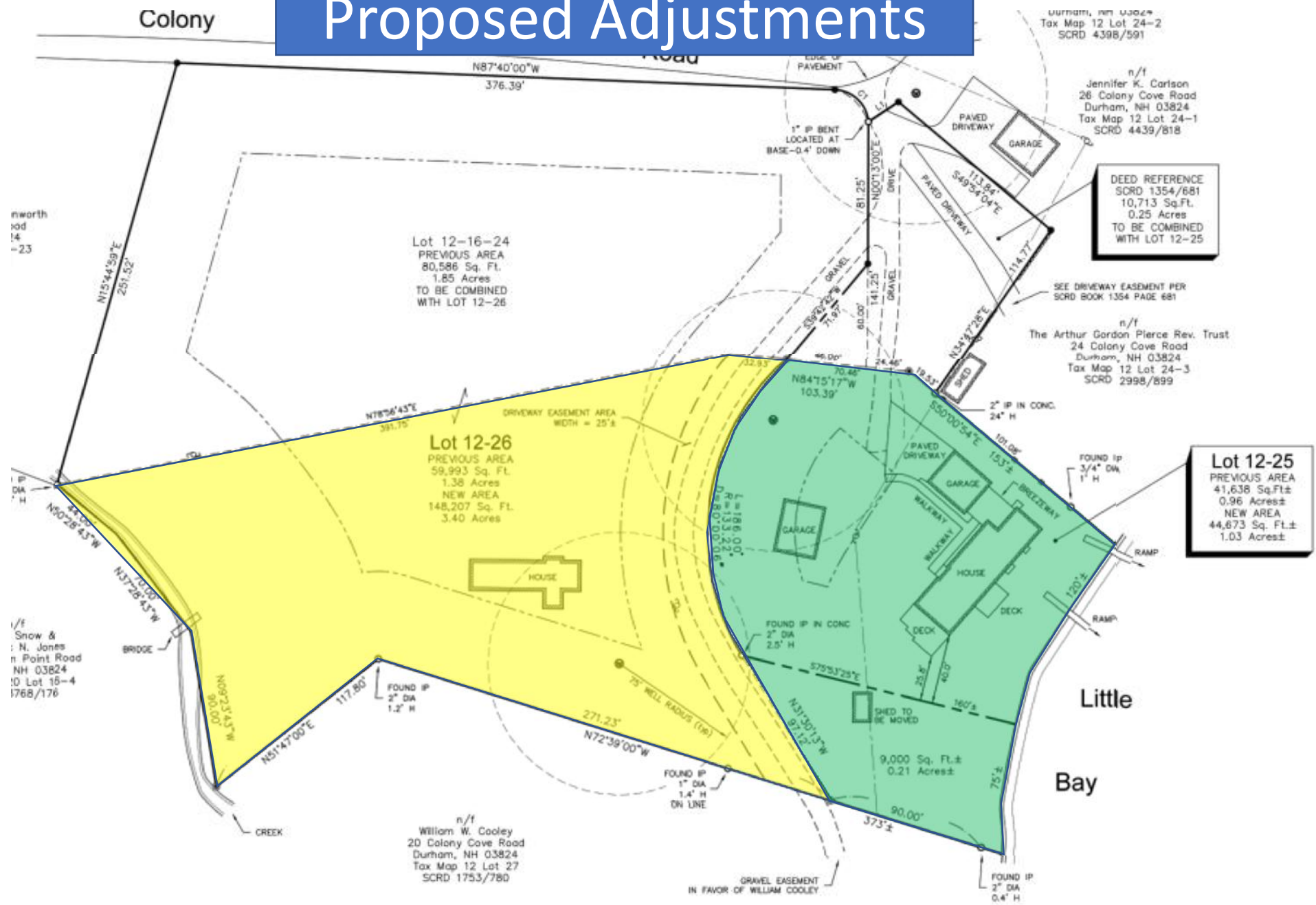
Mom's House

Our house

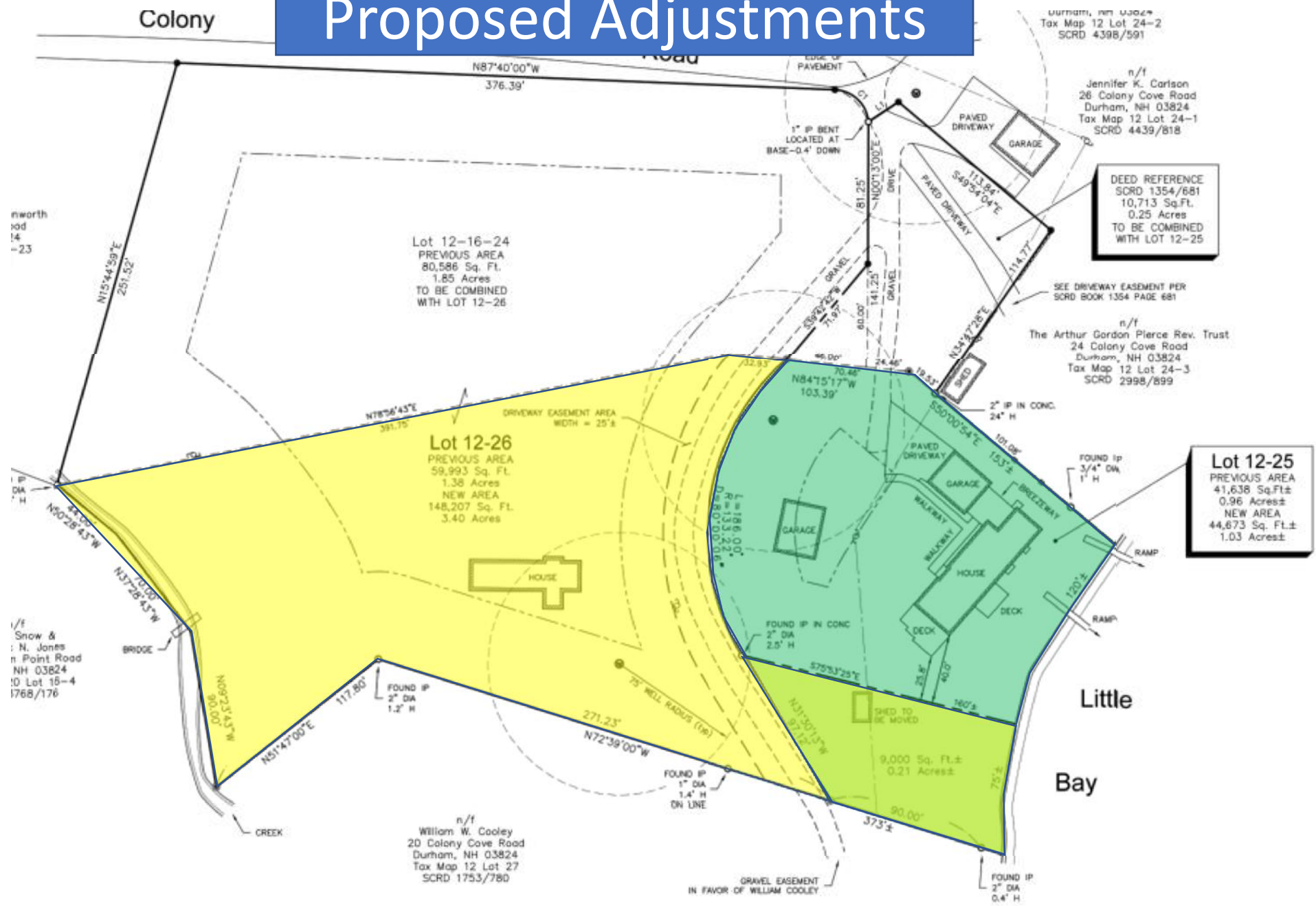
Proposed Adjustments



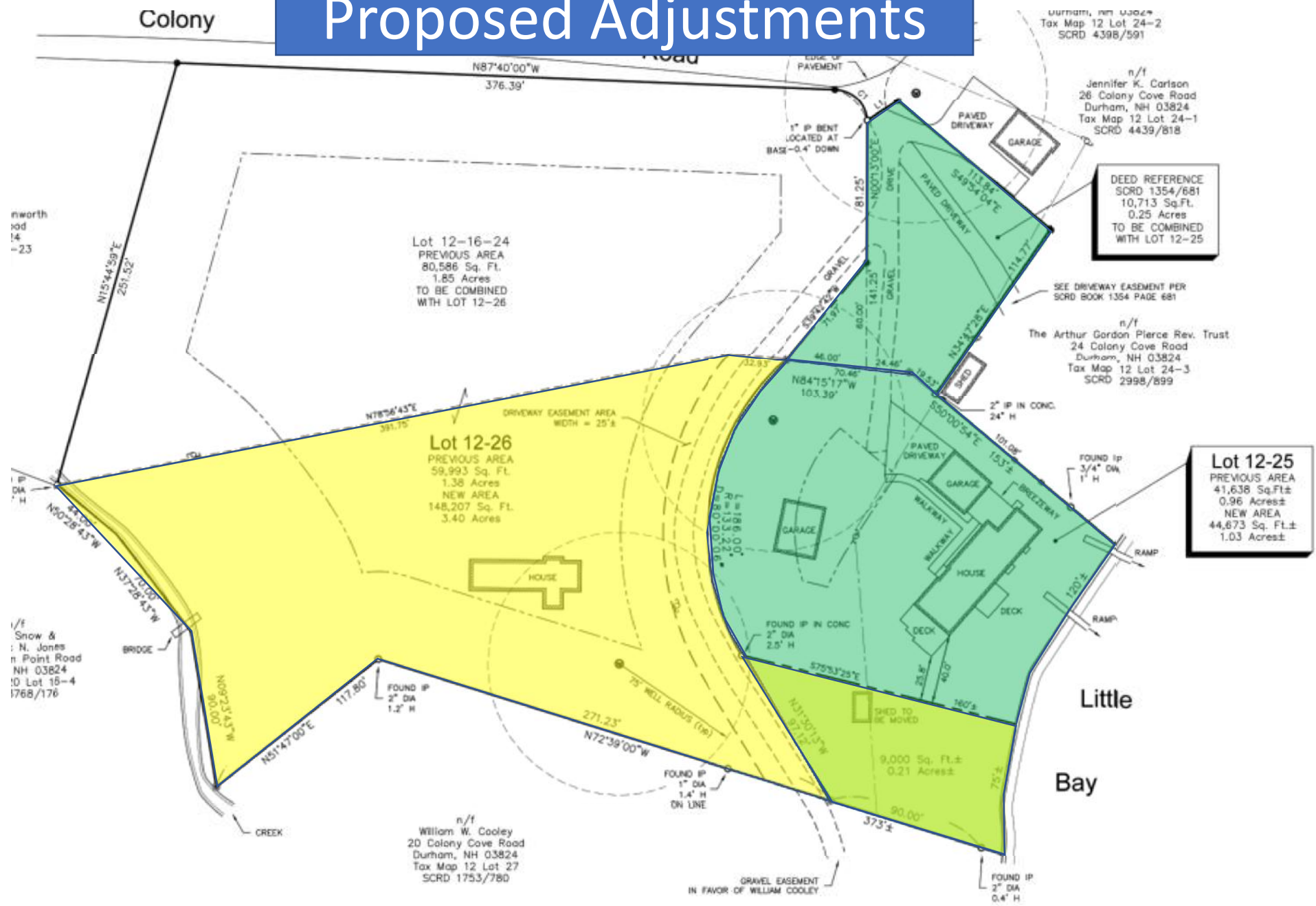
Proposed Adjustments



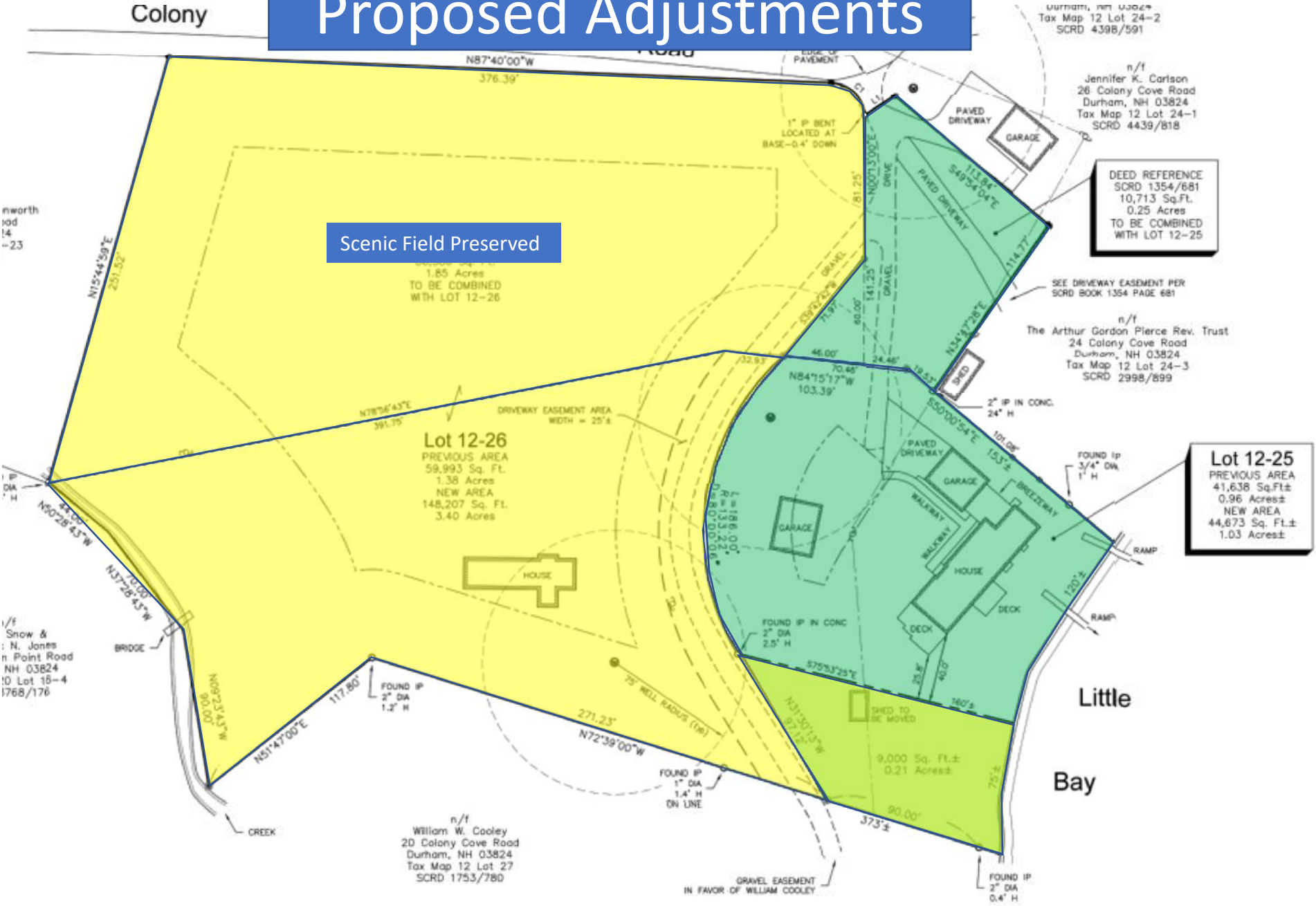
Proposed Adjustments



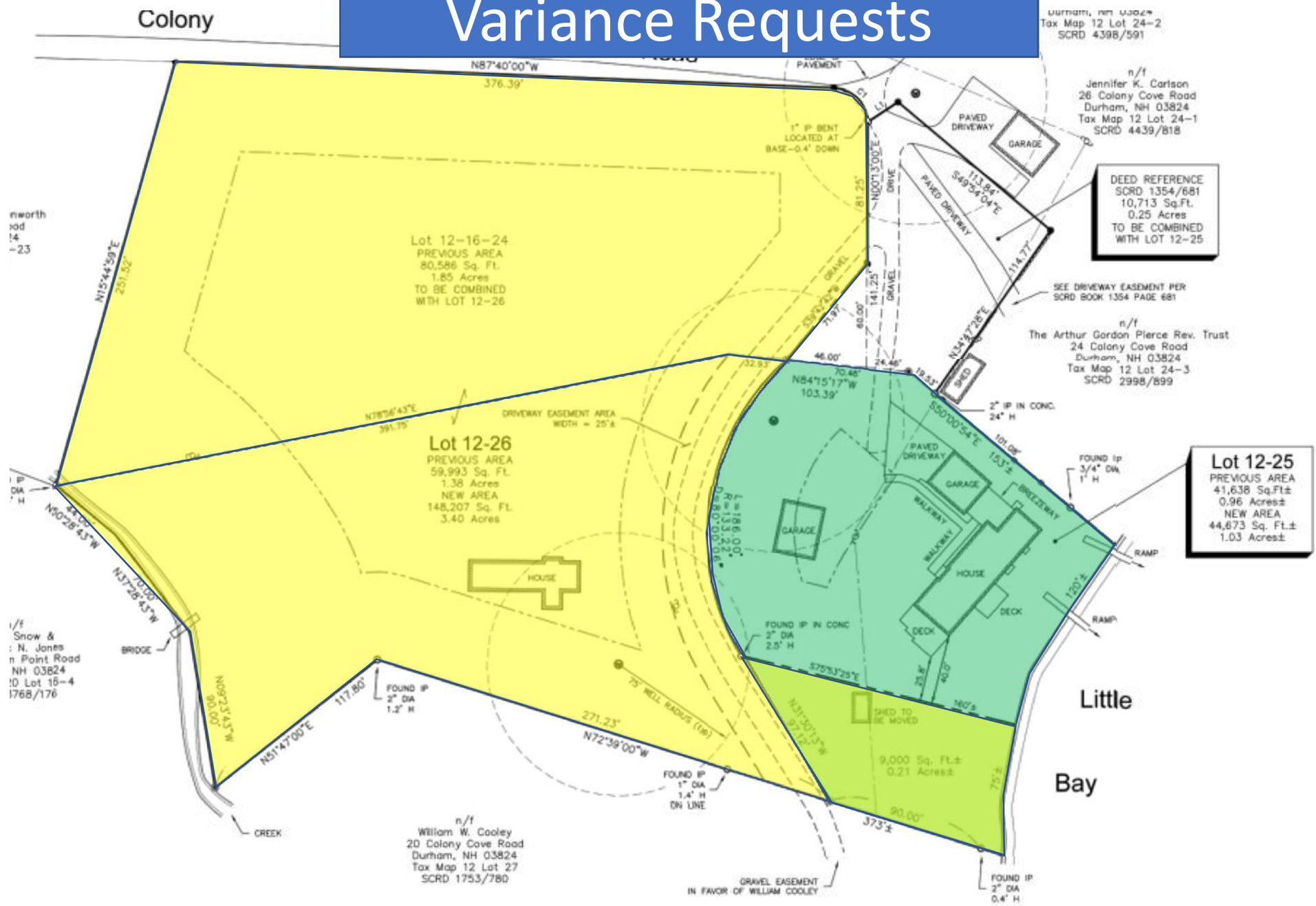
Proposed Adjustments



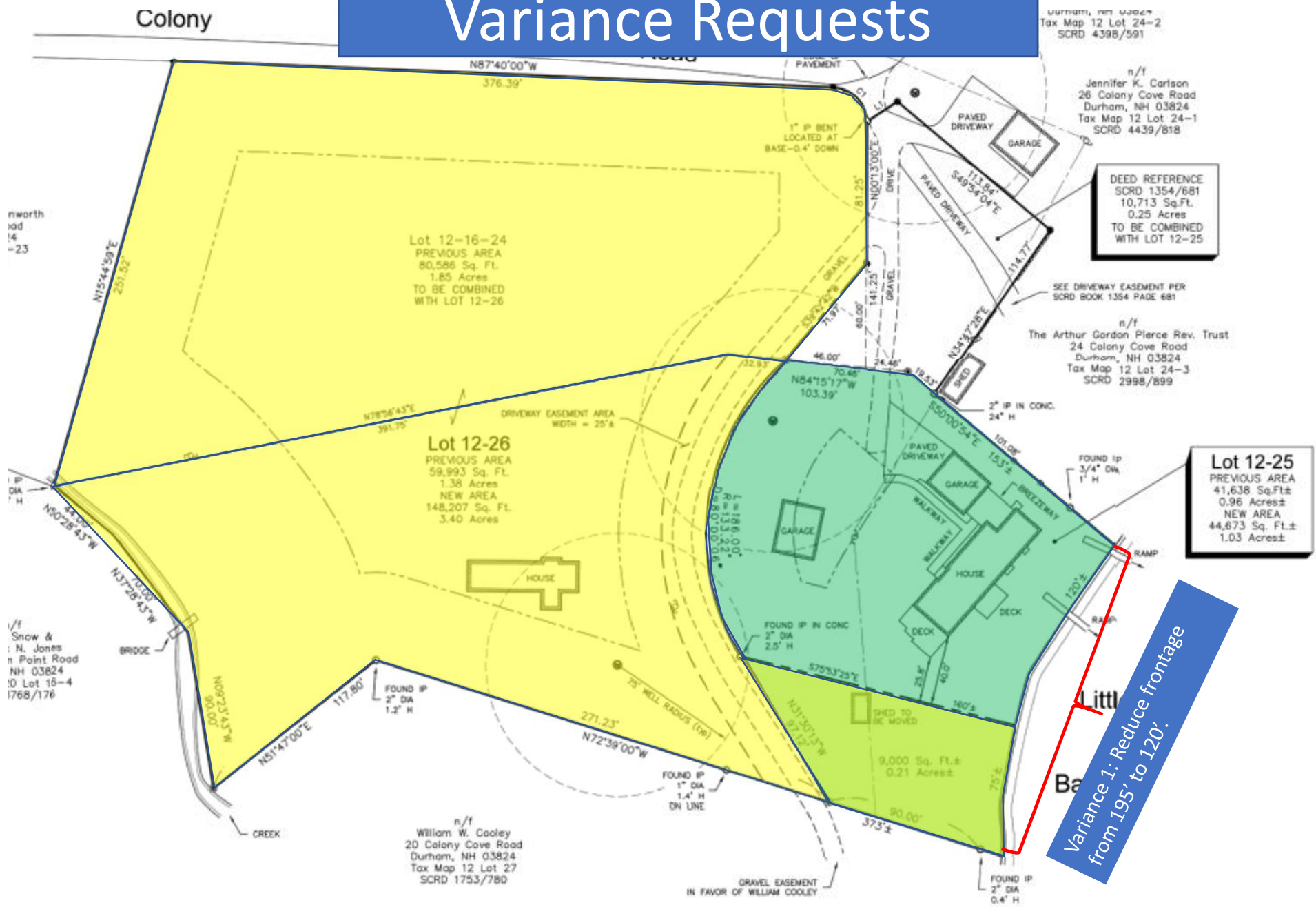
Proposed Adjustments



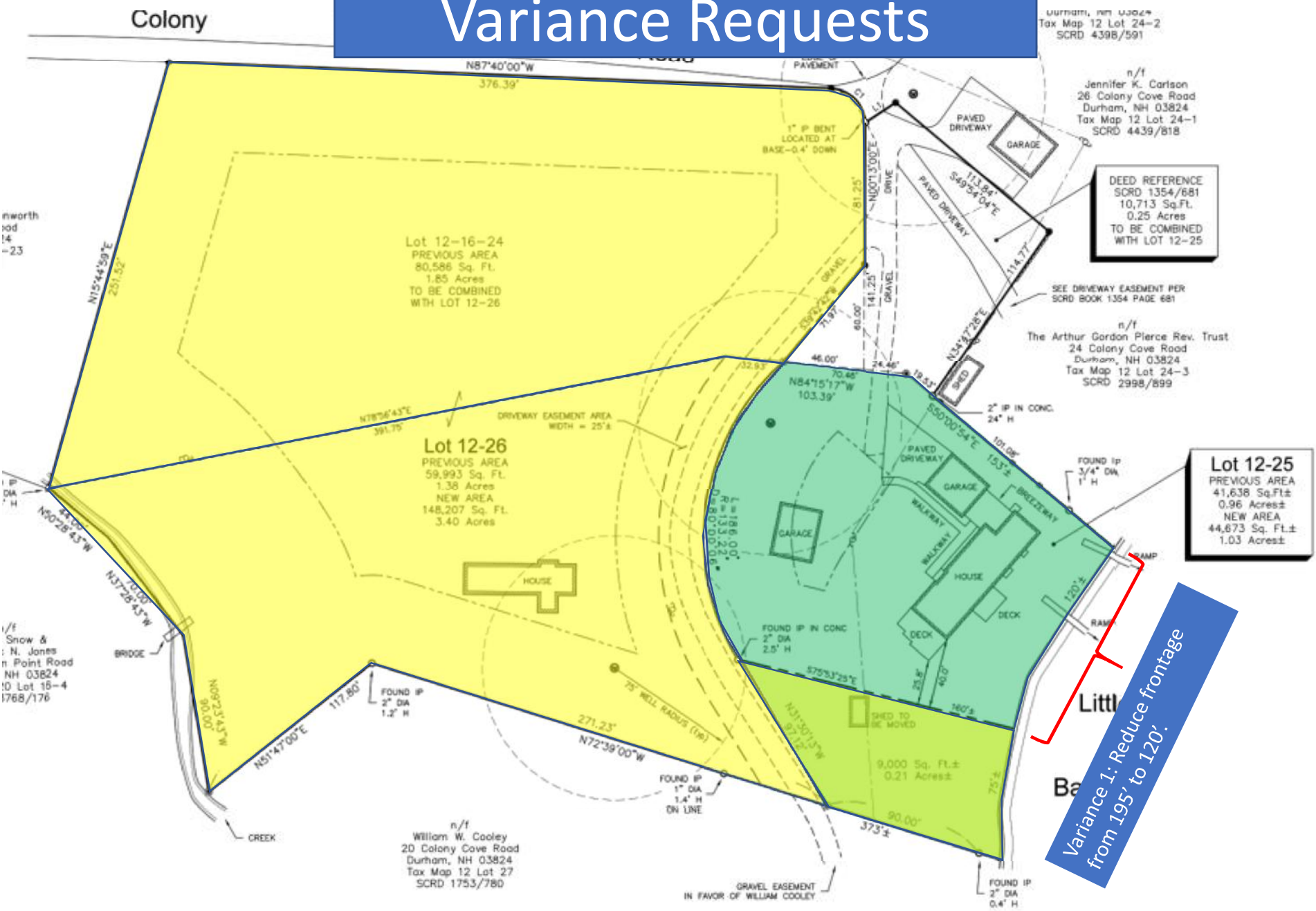
Colony



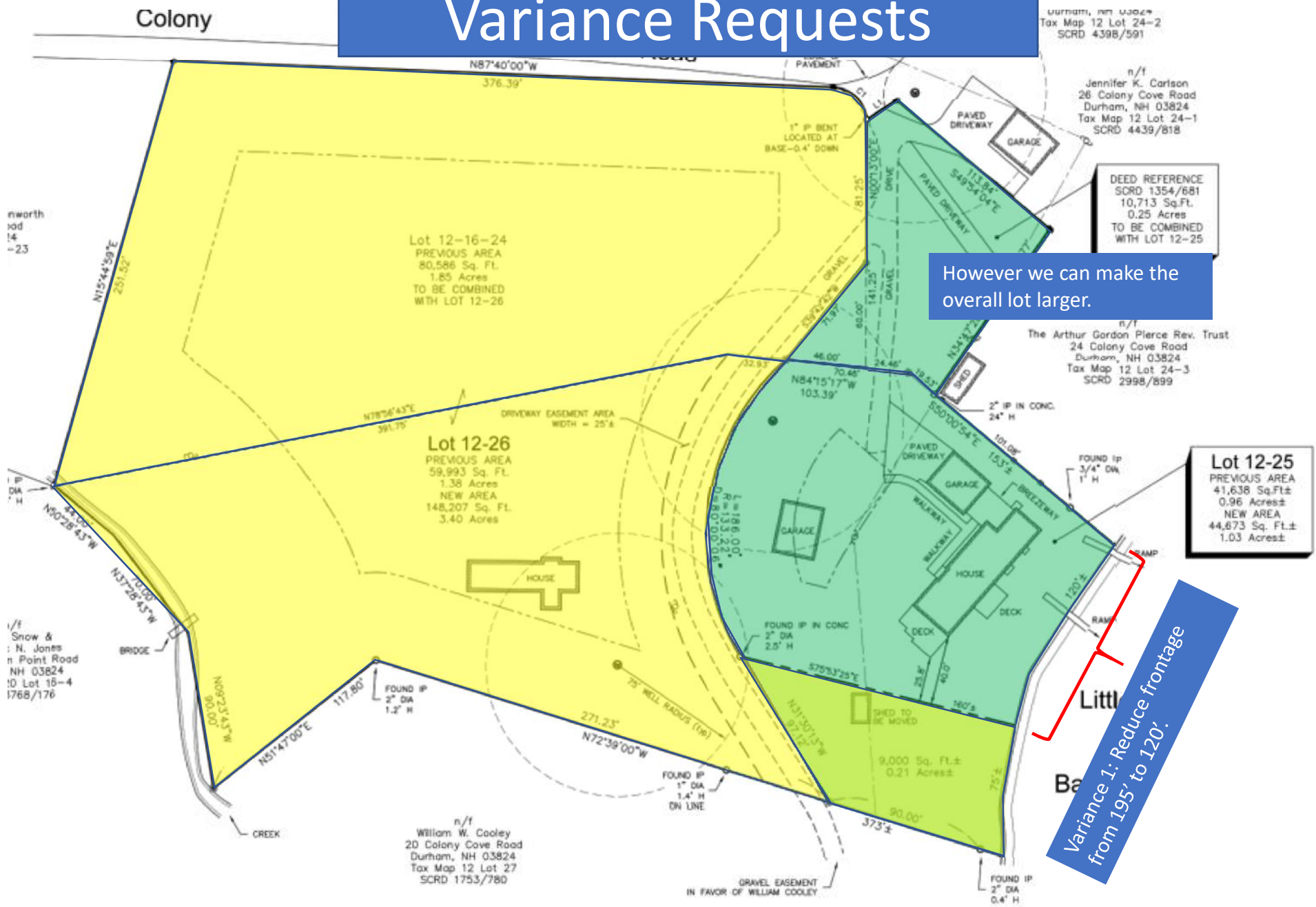
Variance Requests



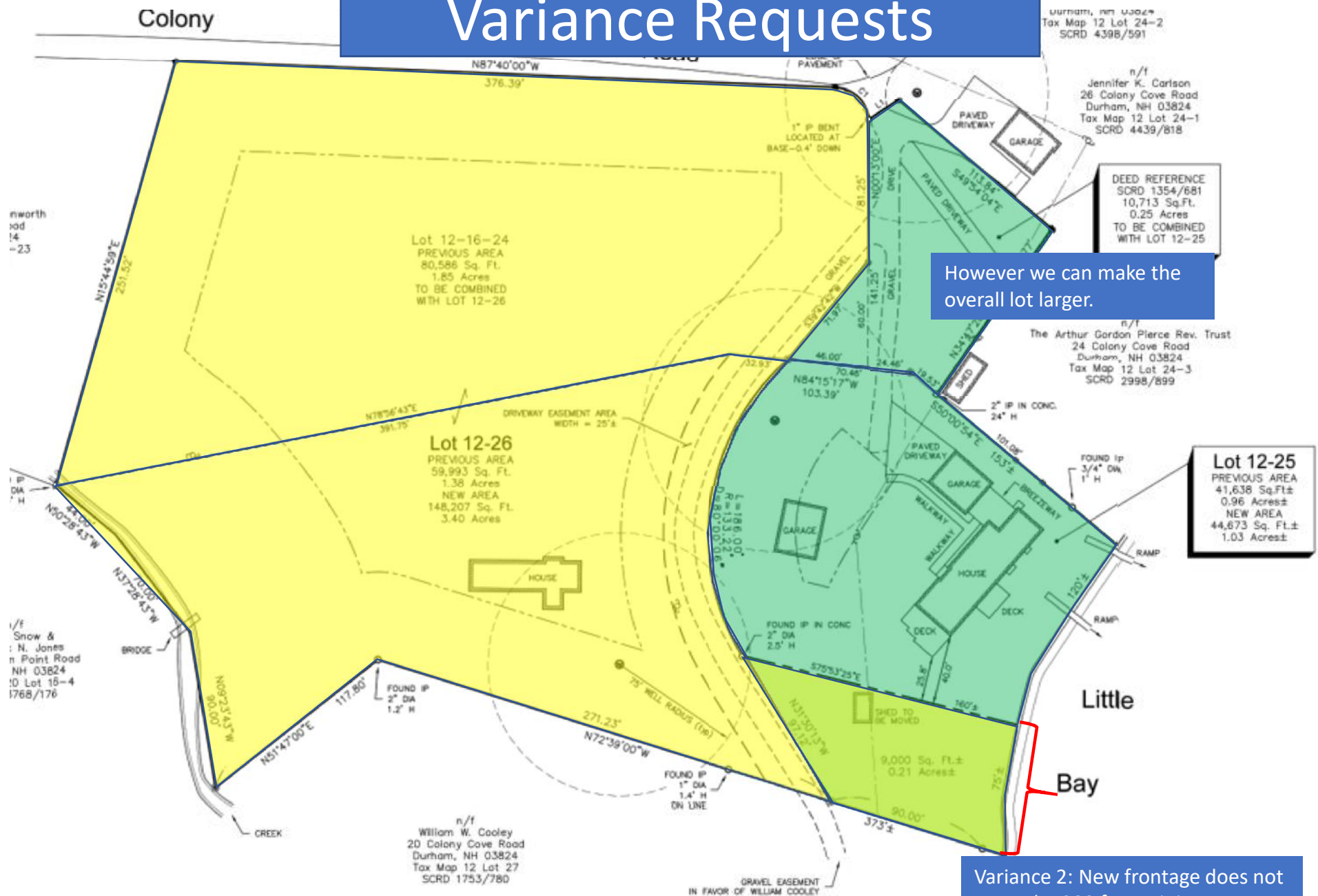
Variance Requests



Variance Requests



Variance Requests



However we can make the overall lot larger.

Variance 2: New frontage does not meet the 200 foot minimum.

Variance Requests

