





- GRADING & EROSION CONTROL NOTES:**
1. ALL EROSION CONTROL MEASURES SHALL BE IN ACCORDANCE WITH THE LATEST EDITIONS OF THE NEW HAMPSHIRE DEPARTMENT OF TRANSPORTATION, CHAPTER 200, AND THE NEW HAMPSHIRE DEPARTMENT OF REVENUE, CHAPTER 200.
  2. ALL PARKING AREA AND DRAINAGE WORK SHALL BE IN ACCORDANCE WITH THE LATEST EDITIONS OF THE NEW HAMPSHIRE DEPARTMENT OF TRANSPORTATION, CHAPTER 200, AND THE NEW HAMPSHIRE DEPARTMENT OF REVENUE, CHAPTER 200.
  3. ALL DISTURBED AREAS NOT PAVED OR OTHERWISE TREATED SHALL RECEIVE 4" OF GRANULAR FILL, AS SPECIFIED IN THE NOTES ON SHEET C3.
  4. COMPACTION REQUIREMENTS:  
a. BELOW PAVED OR CONCRETE AREAS: 95%  
b. BELOW SAND BLANKET BACKFILL: 90%  
c. BELOW LOAM AND SEED AREAS: 90%
  5. ALL PERCENTAGES OF COMPACTION SHALL BE OF THE MAXIMUM PROCTOR DENSITY.
  6. EROSION CONTROL DEVICES SHALL BE INSPECTED AFTER EACH RAIN STORM OF 0.50 INCHES OR GREATER DAMAGED EROSION CONTROL DEVICES SHALL BE REPLACED OR REPAIRED.
  7. ALL TEMPORARY LOAM STOCKPILES SHALL RECEIVE TEMPORARY EROSION CONTROL MEASURES.
- STORMWATER DESIGN INTENT:**
1. THE DESIGN INTENT IS TO CAPTURE ALL ROOF RUNOFF FROM THE SITE IN A STORMWATER POND AND DISCHARGE IT TO PETTEE BROOK.
  2. THE STORMWATER POND SHALL BE DESIGNED TO STORE 24 HOURS OF RAINFALL AT A DESIGN RAINFALL RATE OF 3.0 INCHES PER HOUR.
  3. THE STORMWATER POND SHALL BE DESIGNED TO MAINTAIN A MINIMUM WATER DEPTH OF 3 FEET.
  4. THE STORMWATER POND SHALL BE DESIGNED TO MAINTAIN A MINIMUM WATER DEPTH OF 3 FEET.

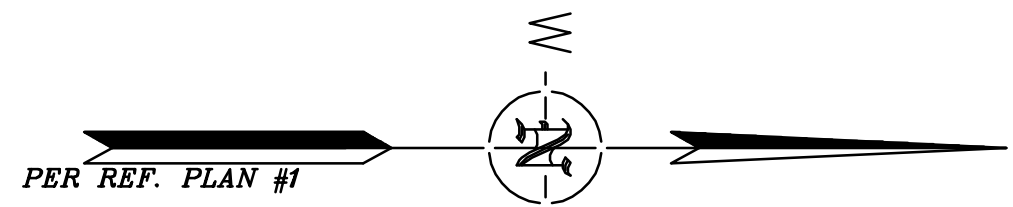
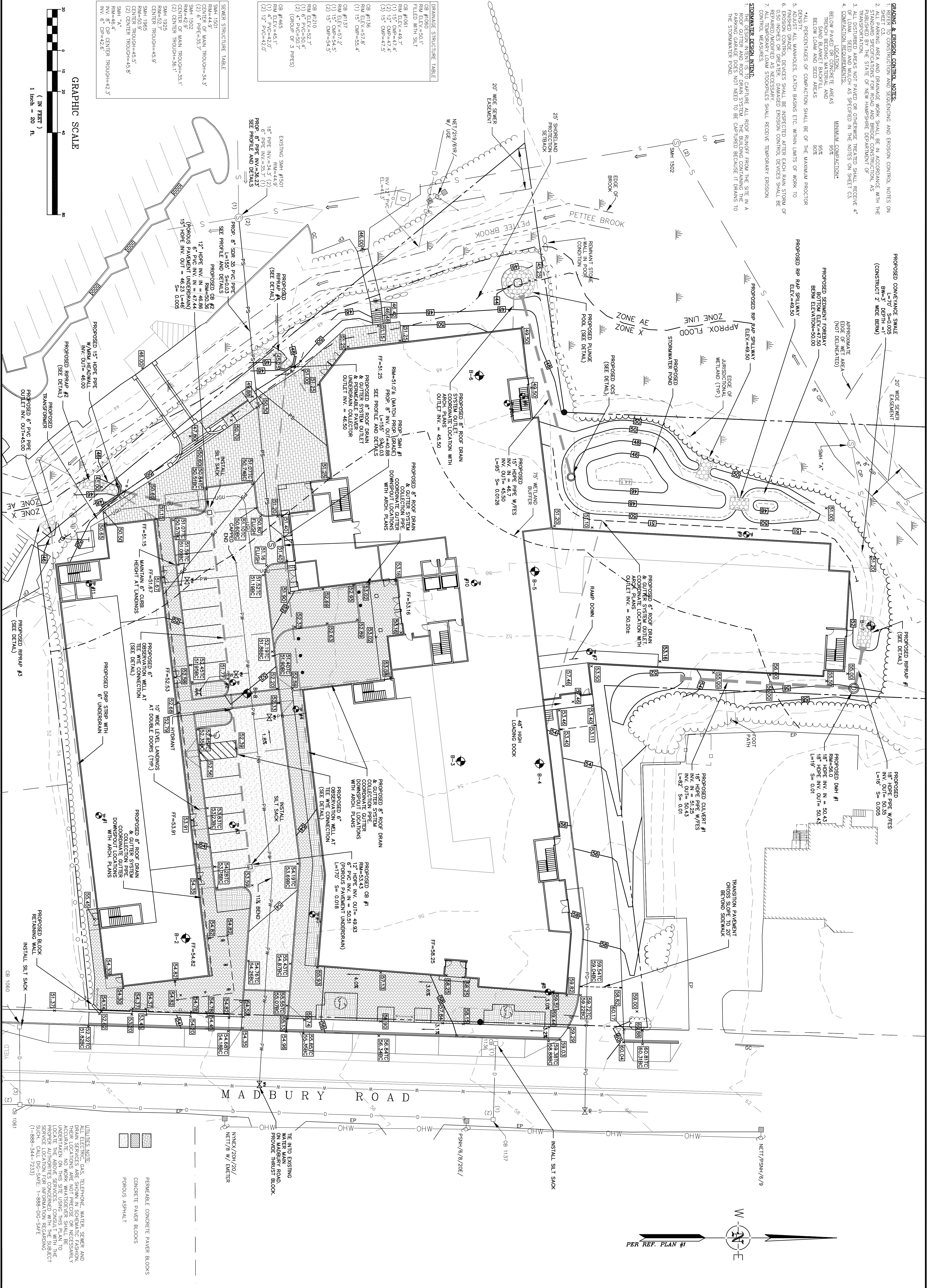
**DRAINAGE STRUCTURE TABLE**

CB #1060	RM ELEV.=90.1'
FILED WITH SLIT	
CB #1061	RM ELEV.=49.7'
(1) 12" CWP=44.4'	
(2) 12" CWP=44.4'	
(3) 15" CWP=44.5'	
CB #1136	RM ELEV.=57.2'
RM ELEV.=57.2'	
(1) 15" CWP=55.4'	
(2) 15" CWP=55.4'	
(3) 15" CWP=55.4'	
CB #1210	RM ELEV.=50.7'
RM ELEV.=50.7'	
(2) 4" PVC=50.7'	
(GROUP OF 3 PIPES)	
CB #1465	RM ELEV.=45.1'
(1) 4" PVC=42.0'	
(2) 12" PVC=42.0'	

**SEWER STRUCTURE TABLE**

SMH 1501	RM ELEV.=44.9'
SMH 1502	RM ELEV.=44.9'
SMH 1503	RM ELEV.=44.9'
SMH 1504	RM ELEV.=44.9'
SMH 1505	RM ELEV.=44.9'
SMH 1506	RM ELEV.=44.9'
SMH 1507	RM ELEV.=44.9'
SMH 1508	RM ELEV.=44.9'
SMH 1509	RM ELEV.=44.9'
SMH 1510	RM ELEV.=44.9'
SMH 1511	RM ELEV.=44.9'
SMH 1512	RM ELEV.=44.9'
SMH 1513	RM ELEV.=44.9'
SMH 1514	RM ELEV.=44.9'
SMH 1515	RM ELEV.=44.9'
SMH 1516	RM ELEV.=44.9'
SMH 1517	RM ELEV.=44.9'
SMH 1518	RM ELEV.=44.9'
SMH 1519	RM ELEV.=44.9'
SMH 1520	RM ELEV.=44.9'
SMH 1521	RM ELEV.=44.9'
SMH 1522	RM ELEV.=44.9'
SMH 1523	RM ELEV.=44.9'
SMH 1524	RM ELEV.=44.9'
SMH 1525	RM ELEV.=44.9'
SMH 1526	RM ELEV.=44.9'
SMH 1527	RM ELEV.=44.9'
SMH 1528	RM ELEV.=44.9'
SMH 1529	RM ELEV.=44.9'
SMH 1530	RM ELEV.=44.9'
SMH 1531	RM ELEV.=44.9'
SMH 1532	RM ELEV.=44.9'
SMH 1533	RM ELEV.=44.9'
SMH 1534	RM ELEV.=44.9'
SMH 1535	RM ELEV.=44.9'
SMH 1536	RM ELEV.=44.9'
SMH 1537	RM ELEV.=44.9'
SMH 1538	RM ELEV.=44.9'
SMH 1539	RM ELEV.=44.9'
SMH 1540	RM ELEV.=44.9'
SMH 1541	RM ELEV.=44.9'
SMH 1542	RM ELEV.=44.9'
SMH 1543	RM ELEV.=44.9'
SMH 1544	RM ELEV.=44.9'
SMH 1545	RM ELEV.=44.9'
SMH 1546	RM ELEV.=44.9'
SMH 1547	RM ELEV.=44.9'
SMH 1548	RM ELEV.=44.9'
SMH 1549	RM ELEV.=44.9'
SMH 1550	RM ELEV.=44.9'
SMH 1551	RM ELEV.=44.9'
SMH 1552	RM ELEV.=44.9'
SMH 1553	RM ELEV.=44.9'
SMH 1554	RM ELEV.=44.9'
SMH 1555	RM ELEV.=44.9'
SMH 1556	RM ELEV.=44.9'
SMH 1557	RM ELEV.=44.9'
SMH 1558	RM ELEV.=44.9'
SMH 1559	RM ELEV.=44.9'
SMH 1560	RM ELEV.=44.9'
SMH 1561	RM ELEV.=44.9'
SMH 1562	RM ELEV.=44.9'
SMH 1563	RM ELEV.=44.9'
SMH 1564	RM ELEV.=44.9'
SMH 1565	RM ELEV.=44.9'
SMH 1566	RM ELEV.=44.9'
SMH 1567	RM ELEV.=44.9'
SMH 1568	RM ELEV.=44.9'
SMH 1569	RM ELEV.=44.9'
SMH 1570	RM ELEV.=44.9'
SMH 1571	RM ELEV.=44.9'
SMH 1572	RM ELEV.=44.9'
SMH 1573	RM ELEV.=44.9'
SMH 1574	RM ELEV.=44.9'
SMH 1575	RM ELEV.=44.9'
SMH 1576	RM ELEV.=44.9'
SMH 1577	RM ELEV.=44.9'
SMH 1578	RM ELEV.=44.9'
SMH 1579	RM ELEV.=44.9'
SMH 1580	RM ELEV.=44.9'
SMH 1581	RM ELEV.=44.9'
SMH 1582	RM ELEV.=44.9'
SMH 1583	RM ELEV.=44.9'
SMH 1584	RM ELEV.=44.9'
SMH 1585	RM ELEV.=44.9'
SMH 1586	RM ELEV.=44.9'
SMH 1587	RM ELEV.=44.9'
SMH 1588	RM ELEV.=44.9'
SMH 1589	RM ELEV.=44.9'
SMH 1590	RM ELEV.=44.9'
SMH 1591	RM ELEV.=44.9'
SMH 1592	RM ELEV.=44.9'
SMH 1593	RM ELEV.=44.9'
SMH 1594	RM ELEV.=44.9'
SMH 1595	RM ELEV.=44.9'
SMH 1596	RM ELEV.=44.9'
SMH 1597	RM ELEV.=44.9'
SMH 1598	RM ELEV.=44.9'
SMH 1599	RM ELEV.=44.9'
SMH 1600	RM ELEV.=44.9'
SMH 1601	RM ELEV.=44.9'
SMH 1602	RM ELEV.=44.9'
SMH 1603	RM ELEV.=44.9'
SMH 1604	RM ELEV.=44.9'
SMH 1605	RM ELEV.=44.9'
SMH 1606	RM ELEV.=44.9'
SMH 1607	RM ELEV.=44.9'
SMH 1608	RM ELEV.=44.9'
SMH 1609	RM ELEV.=44.9'
SMH 1610	RM ELEV.=44.9'
SMH 1611	RM ELEV.=44.9'
SMH 1612	RM ELEV.=44.9'
SMH 1613	RM ELEV.=44.9'
SMH 1614	RM ELEV.=44.9'
SMH 1615	RM ELEV.=44.9'
SMH 1616	RM ELEV.=44.9'
SMH 1617	RM ELEV.=44.9'
SMH 1618	RM ELEV.=44.9'
SMH 1619	RM ELEV.=44.9'
SMH 1620	RM ELEV.=44.9'
SMH 1621	RM ELEV.=44.9'
SMH 1622	RM ELEV.=44.9'
SMH 1623	RM ELEV.=44.9'
SMH 1624	RM ELEV.=44.9'
SMH 1625	RM ELEV.=44.9'
SMH 1626	RM ELEV.=44.9'
SMH 1627	RM ELEV.=44.9'
SMH 1628	RM ELEV.=44.9'
SMH 1629	RM ELEV.=44.9'
SMH 1630	RM ELEV.=44.9'
SMH 1631	RM ELEV.=44.9'
SMH 1632	RM ELEV.=44.9'
SMH 1633	RM ELEV.=44.9'
SMH 1634	RM ELEV.=44.9'
SMH 1635	RM ELEV.=44.9'
SMH 1636	RM ELEV.=44.9'
SMH 1637	RM ELEV.=44.9'
SMH 1638	RM ELEV.=44.9'
SMH 1639	RM ELEV.=44.9'
SMH 1640	RM ELEV.=44.9'
SMH 1641	RM ELEV.=44.9'
SMH 1642	RM ELEV.=44.9'
SMH 1643	RM ELEV.=44.9'
SMH 1644	RM ELEV.=44.9'
SMH 1645	RM ELEV.=44.9'
SMH 1646	RM ELEV.=44.9'
SMH 1647	RM ELEV.=44.9'
SMH 1648	RM ELEV.=44.9'
SMH 1649	RM ELEV.=44.9'
SMH 1650	RM ELEV.=44.9'
SMH 1651	RM ELEV.=44.9'
SMH 1652	RM ELEV.=44.9'
SMH 1653	RM ELEV.=44.9'
SMH 1654	RM ELEV.=44.9'
SMH 1655	RM ELEV.=44.9'
SMH 1656	RM ELEV.=44.9'
SMH 1657	RM ELEV.=44.9'
SMH 1658	RM ELEV.=44.9'
SMH 1659	RM ELEV.=44.9'
SMH 1660	RM ELEV.=44.9'
SMH 1661	RM ELEV.=44.9'
SMH 1662	RM ELEV.=44.9'
SMH 1663	RM ELEV.=44.9'
SMH 1664	RM ELEV.=44.9'
SMH 1665	RM ELEV.=44.9'
SMH 1666	RM ELEV.=44.9'
SMH 1667	RM ELEV.=44.9'
SMH 1668	RM ELEV.=44.9'
SMH 1669	RM ELEV.=44.9'
SMH 1670	RM ELEV.=44.9'
SMH 1671	RM ELEV.=44.9'
SMH 1672	RM ELEV.=44.9'
SMH 1673	RM ELEV.=44.9'
SMH 1674	RM ELEV.=44.9'
SMH 1675	RM ELEV.=44.9'
SMH 1676	RM ELEV.=44.9'
SMH 1677	RM ELEV.=44.9'
SMH 1678	RM ELEV.=44.9'
SMH 1679	RM ELEV.=44.9'
SMH 1680	RM ELEV.=44.9'
SMH 1681	RM ELEV.=44.9'
SMH 1682	RM ELEV.=44.9'
SMH 1683	RM ELEV.=44.9'
SMH 1684	RM ELEV.=44.9'
SMH 1685	RM ELEV.=44.9'
SMH 1686	RM ELEV.=44.9'
SMH 1687	RM ELEV.=44.9'
SMH 1688	RM ELEV.=44.9'
SMH 1689	RM ELEV.=44.9'
SMH 1690	RM ELEV.=44.9'
SMH 1691	RM ELEV.=44.9'
SMH 1692	RM ELEV.=44.9'
SMH 1693	RM ELEV.=44.9'
SMH 1694	RM ELEV.=44.9'
SMH 1695	RM ELEV.=44.9'
SMH 1696	RM ELEV.=44.9'
SMH 1697	RM ELEV.=44.9'
SMH 1698	RM ELEV.=44.9'
SMH 1699	RM ELEV.=44.9'
SMH 1700	RM ELEV.=44.9'

GRAPHIC SCALE  
(IN FEET)  
1 inch = 20 ft



PER REF. PLAN #1

- UTILITIES NOTE:
- ALL ELECTRICAL, GAS, TELEPHONE, WATER, SEWER AND DRAIN SERVICES ARE SHOWN IN SCHEMATIC FASHION. ACCURATE, NO WORK WHATSOEVER SHALL BE UNDERTAKEN ON THIS SITE USING THIS PLAN TO PROPER LOCATIONS CONCERNED WITH THE SUBJECT SERVICE LOCATION FOR INFORMATION REGARDING SUCH, CALL DIG-SAFE: 1-888-DIG-SAFE (1-888-344-7235)
- PERMEABLE CONCRETE PAVEMENT BLOCKS  
CONCRETE PAVEMENT BLOCKS  
POROUS ASPHALT

UTILITIES, GRADING, DRAINAGE  
& EROSION CONTROL PLAN  
prepared for  
MADBURY COMMONS  
17 & 21 MADBURY ROAD DURHAM, NH

DATE: 10/16/13  
SCALE: 1"=20'  
DESIGNED BY: MJS  
DRAWN BY: MS  
APPROVED BY: MJS  
DWG FILE: 13-007 C1E.dwg

SEAL

NO.	REVISIONS	DATE	INT.
1.	REVISIONS PER COMMERCIAL OCCUPANCY REQUIREMENTS	1/10/14	MS
0.	SUBMISSION FOR SITE PLAN REVIEW	10/16/13	MS

**MJS ENGINEERING, PC**  
CIVIL  
ENVIRONMENTAL  
CONSULTING ENGINEERING

5 RAILROAD ST., P.O. BOX 359  
NEWBURY, NH 03857  
PHONE: (603) 659-4979, FAX: (603) 659-4627  
E-MAIL: MJS@MJS-ENGINEERING.COM

JOB: 13-007

C2