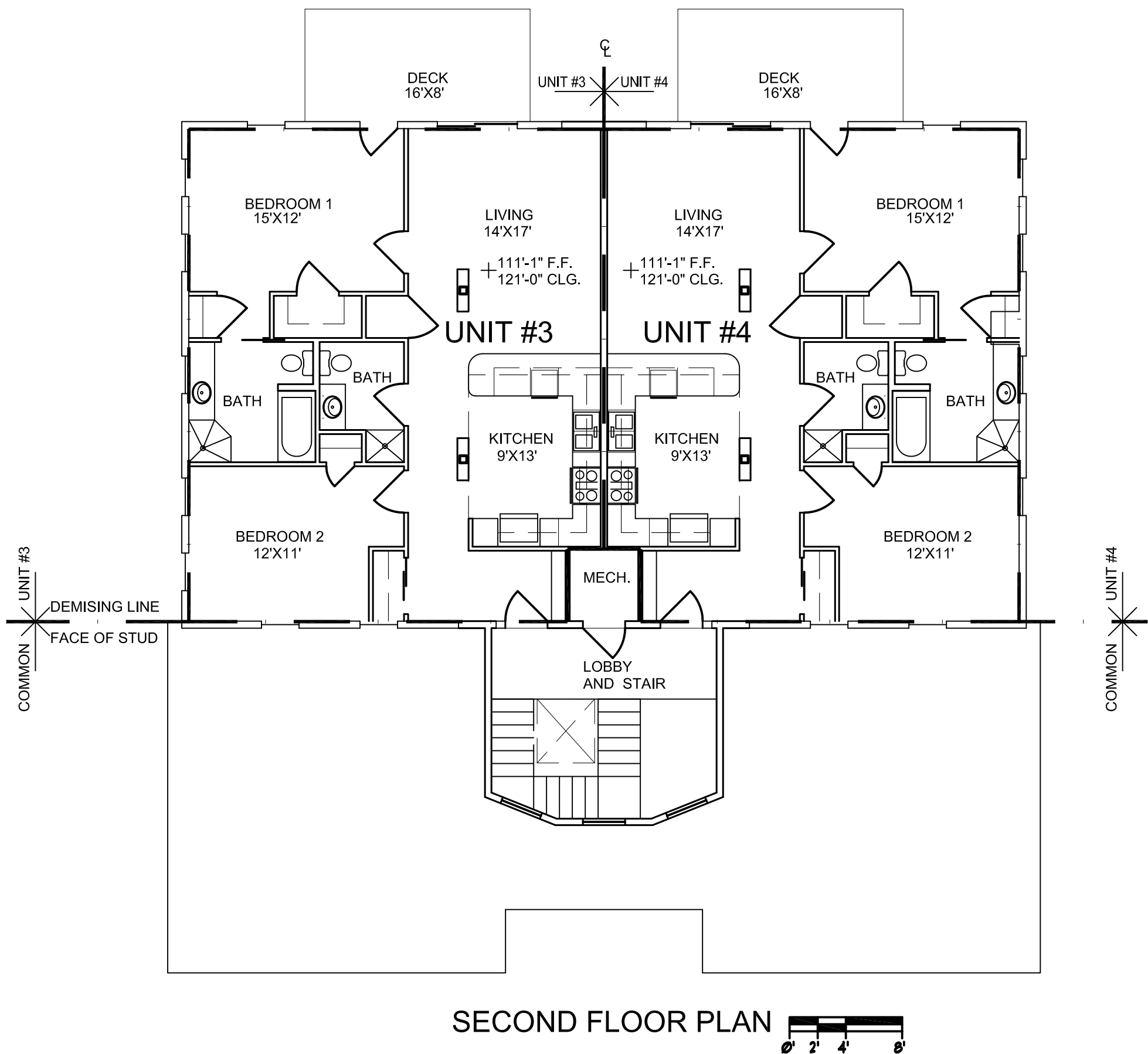
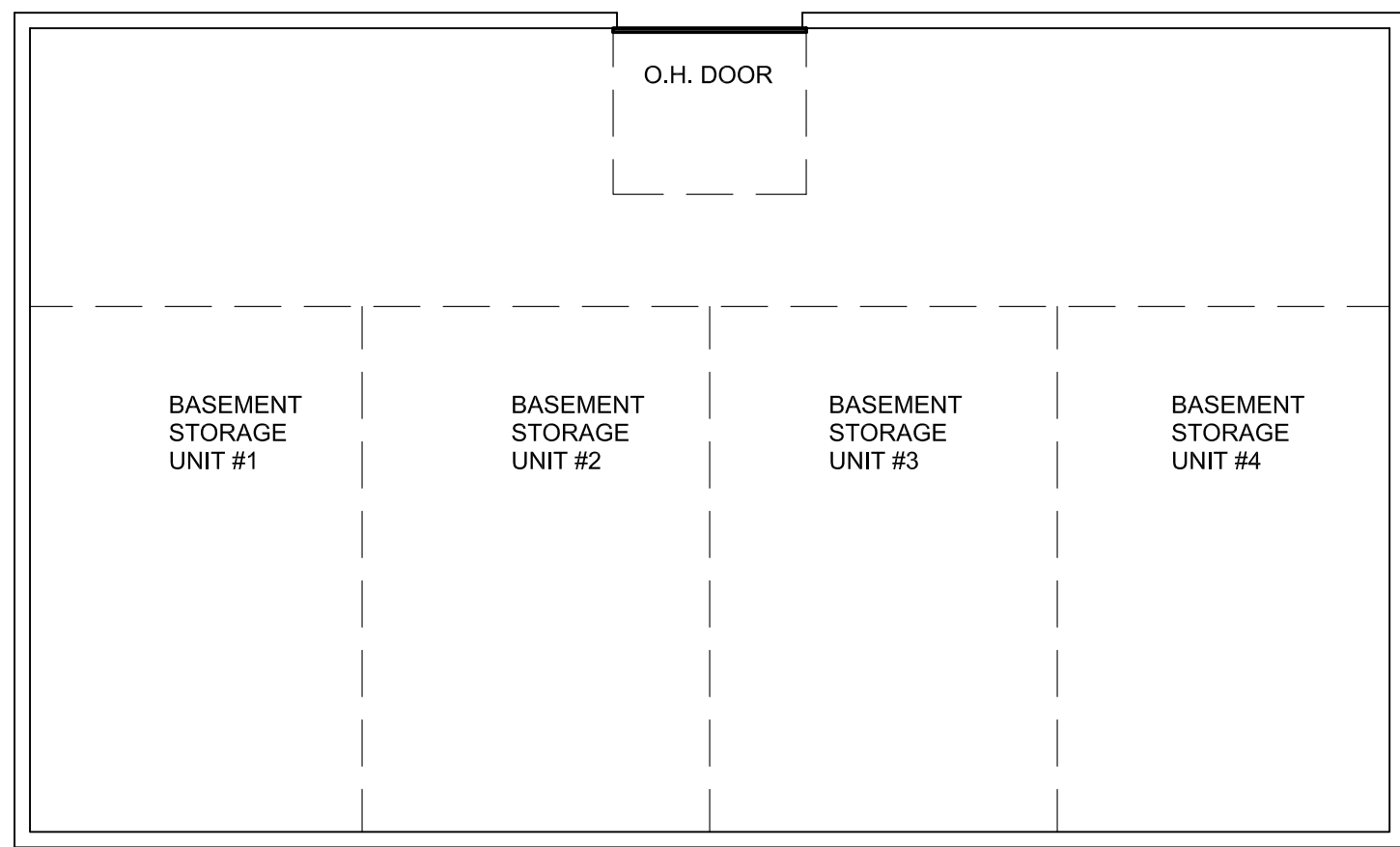


FIRST FLOOR PLAN



SECOND FLOOR PLAN



PARTIAL BASEMENT PLAN

NOTES

UNIT #1

FLOOR AREA = 1,018 SQ. FT.

BASEMENT STORAGE = 325 SQ. FT.

UNIT #2

FLOOR AREA = 1,018 SQ. FT.

BASEMENT STORAGE = 325 SQ. FT.

UNIT #3

FLOOR AREA = 1,018 SQ. FT.

BASEMENT STORAGE = 325 SQ. FT.

UNIT #4

FLOOR AREA = 1,018 SQ. FT.

BASEMENT STORAGE = 325 SQ. FT.

FILING OF THESE SHEETS IS FOR CONDOMINIUM PURPOSES ONLY.

PURSUANT TO RSA 356-B, IT DOES NOT CONSTITUTE A SUBDIVISION OF LAND.

"I CERTIFY THAT THIS PLAN IS ACCURATE AND IS IN COMPLIANCE WITH THE PROVISIONS OF NEW HAMPSHIRE RSA 356-B:20(I) AND THAT ALL UNITS SHOWN HAVE BEEN SUBSTANTIALLY COMPLETED EXCEPT FOR PROPOSED WALLS SHOWN HEREON."

ARCHITECT

DATE

TOWN OF DURHAM PLANNING BOARD

CHAIRPERSON

DATE