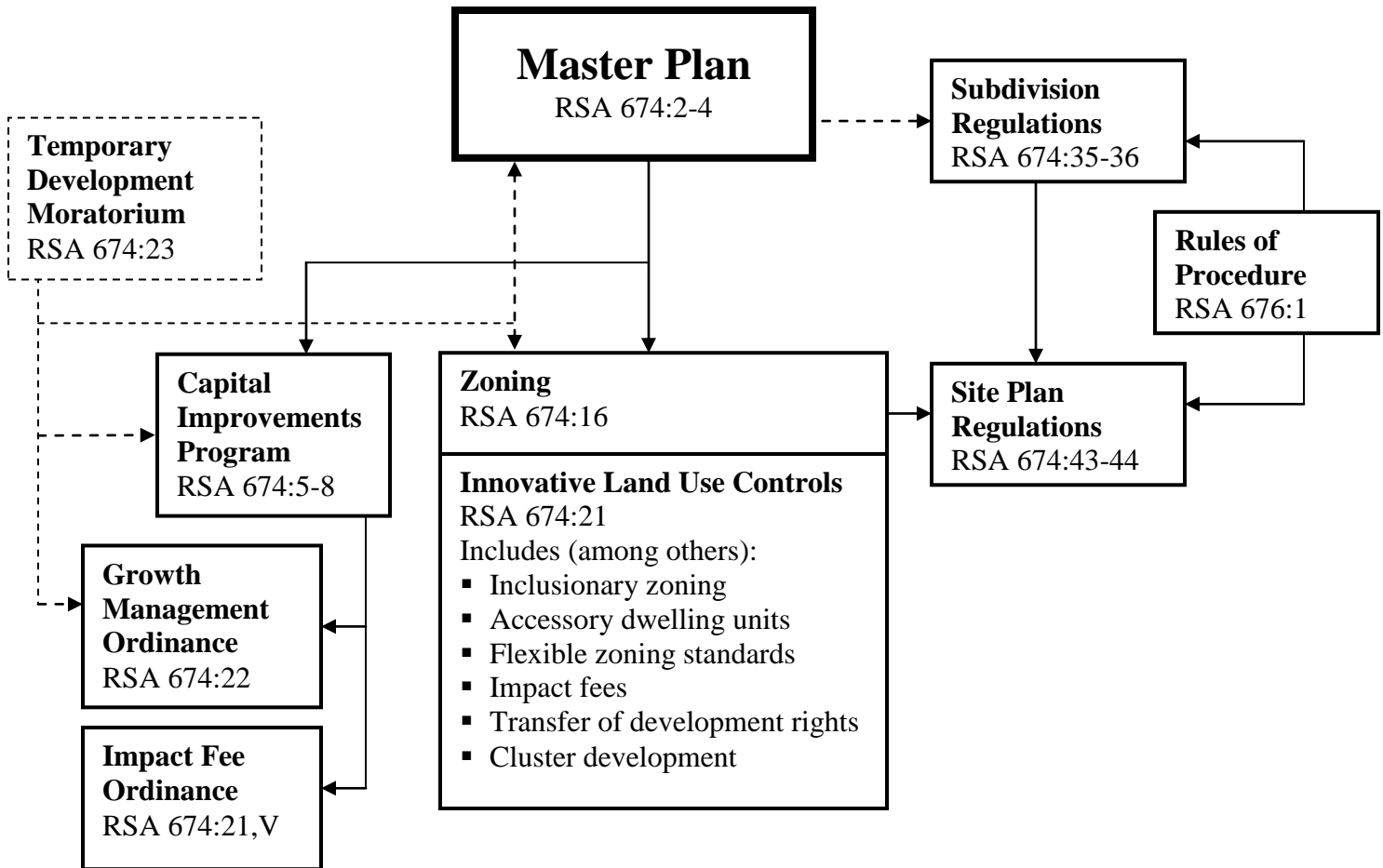


NH Municipal Land Use Regulation



- Some State Laws with Local Land Use Implications**
- Building Code**
RSA 155-A (and RSA 674:51)
 - State Fire Code**
RSA 153:5
 - Shoreland Protection Act**
RSA 483-B
 - Dredge and Fill of Wetlands**
RSA 482-A
 - Subdivision (Septic systems)**
RSA 485-A:29
 - Protective Well Radii**
RSA 485-A:30-b
 - Terrain Alteration (≥100K s.f.)**
RSA 485-A:17

Workforce Housing Statute

Examine the collective impact of all local land use regulations to determine if there are “reasonable and realistic opportunities for the development of workforce housing.” RSA 674:58 – :61

- Land Use Regulatory and Non-Regulatory Boards**
- | <u>Regulatory / Quasi-Judicial</u> | <u>Non-Regulatory (usually)</u> |
|---|---------------------------------|
| Planning Board | Conservation Commission |
| Zoning Board of Adjustment | Heritage Commission |
| Building Code Board (ZBA) | Agriculture Commission |
| Historic District Comm’n | Housing Commission |
| Selectboard/Council—they are <i>the enforcers</i> | Regional Planning Comm’n |
| Excavation ‘Regulator’ | |