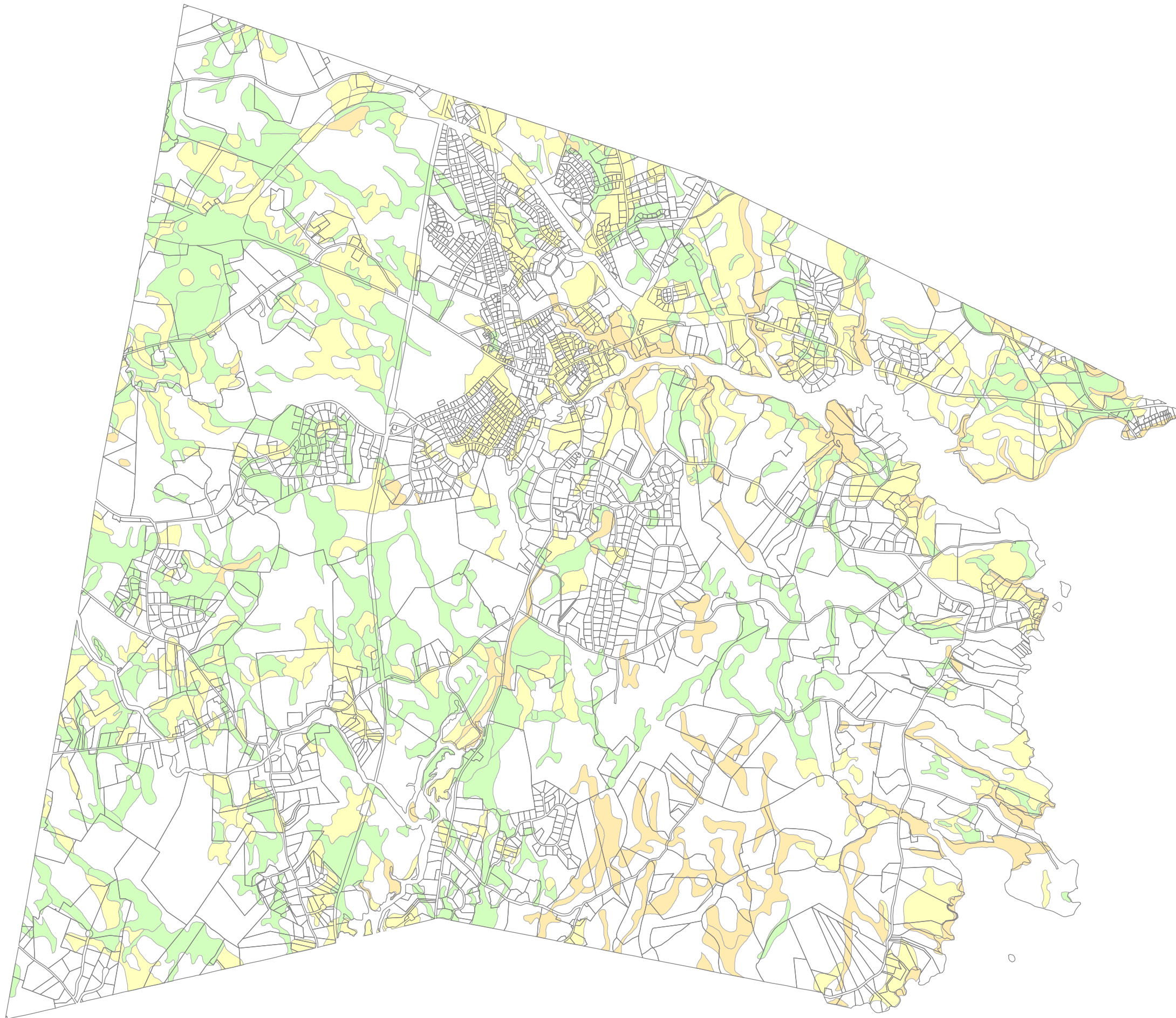
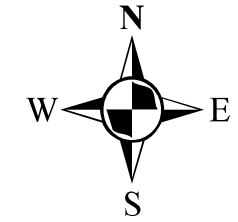

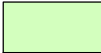



Town of Durham Soils Map



Soil Types

-  Moderately Well Drained
-  Poorly Drained
-  Very Poorly Drained

Map produced October 15, 2007 by Karen Edwards and updated.
September 2015. Data dated 2009 and taken from NH GRANIT
Database. All GIS data used to create this map
was georeferenced to New Hampshire State Plane
Coordinate System, North American Datam "NAD83/86," feet as units.