

# Town of Durham New Hampshire

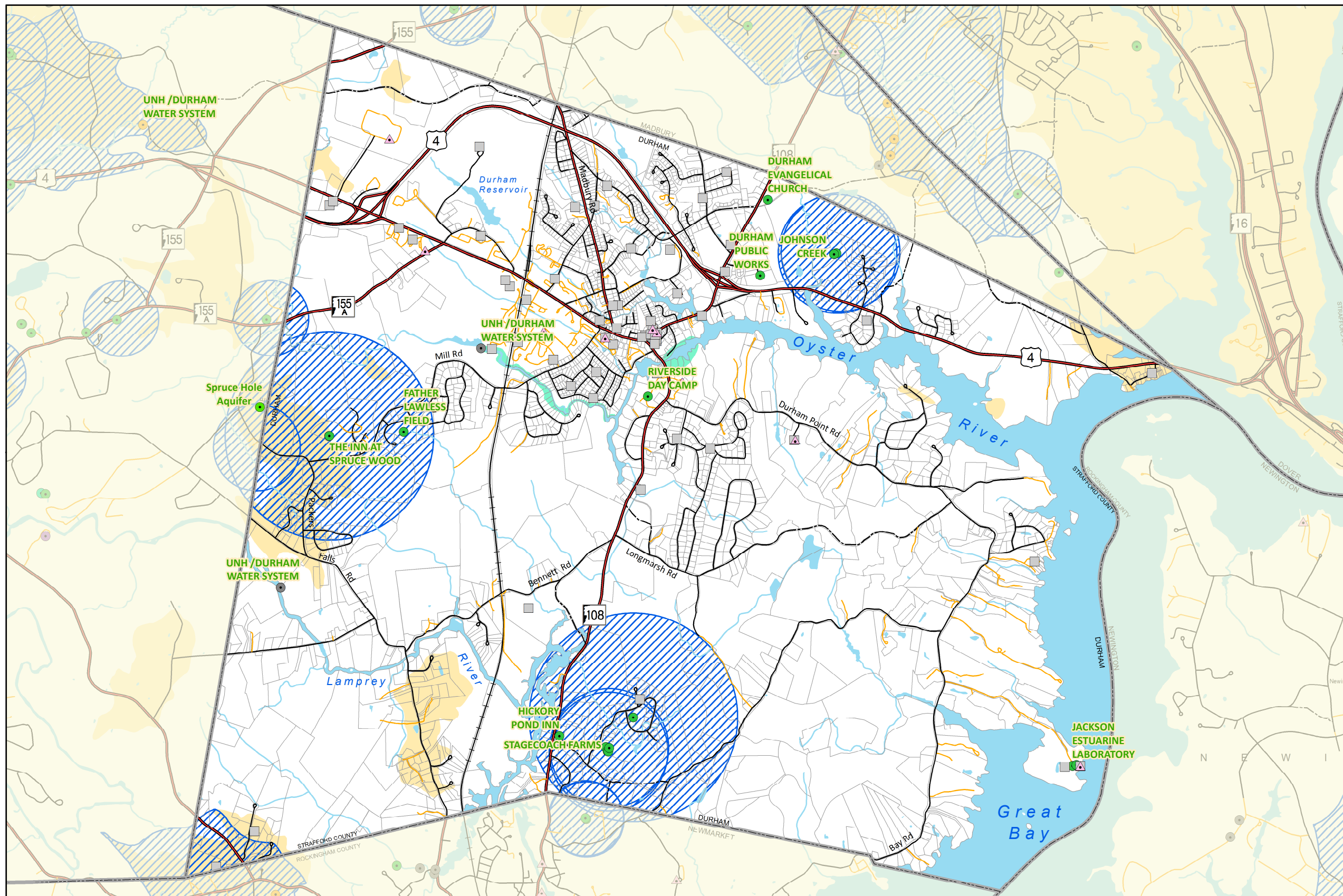


2015 Master Plan Update  
Figure M-7

## Aquifers & Public Water Supplies

### Legend

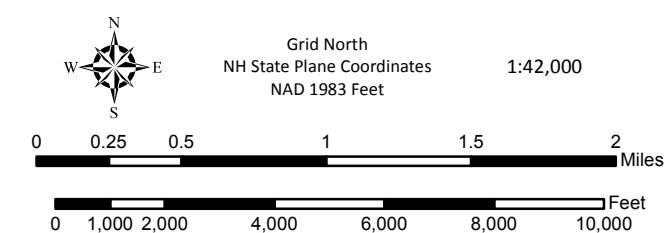
- Public Water Supply**
- Bedrock Well
  - Dug Well
  - General Packed Well
  - Spring
  - No data
  - ▲ Hazardous Waste Generator
  - Groundwater Hazard Inventory
  - Dam Inundation Area
  - Stratified Drift Aquifer
  - Wellhead Protection Areas



**Data Sources**

Base features are from USGS 1:24,000 scale Digital Line Graphs, as archived in the GRANIT database. Digital data in NH GRANIT represent the efforts of the contributing agencies to record information from the cited source materials. Complex Systems Research Center (CSRC), under contract to the Office of Energy & Planning (OEP), and in consultation with cooperating agencies, maintains a continuing program to identify and correct errors in these data. Neither OEP nor CSRC make any claim as to the validity or reliability or to any implied uses of these data.

Public Water Supply, Hazardous Waste Generators, Groundwater Hazard Inventory, Wellhead Protection Areas, and Dam Inundation Areas were created by NH Department of Environmental Services, 2010. Wellhead Protection Areas was updated in 2014.



- Base Legend**
- Municipal Boundary
  - Tax Parcel Boundary
  - Stream, River
  - Lake, Pond, River
  - Railroad
  - State
  - Federal
  - Local
  - - - Not Maintained
  - Private

Prepared by **Stafford Regional Planning Commission**  
150 Wakefield St, Suite 12, Rochester, NH 03867  
T: (603) 994-3500 F: (603) 994-3504 Em: srpc@stafford.org  
**Aquifers and Public Water Supplies**  
Date: February 25, 2015  
Path: G:\Requests\Members\Durham\MasterPlanMapping\_Environmental\Chapter\MapDocs\Aquifers\_PWS\_Map.mxd

Maps prepared by Stafford Regional Planning Commission are for planning purposes only.