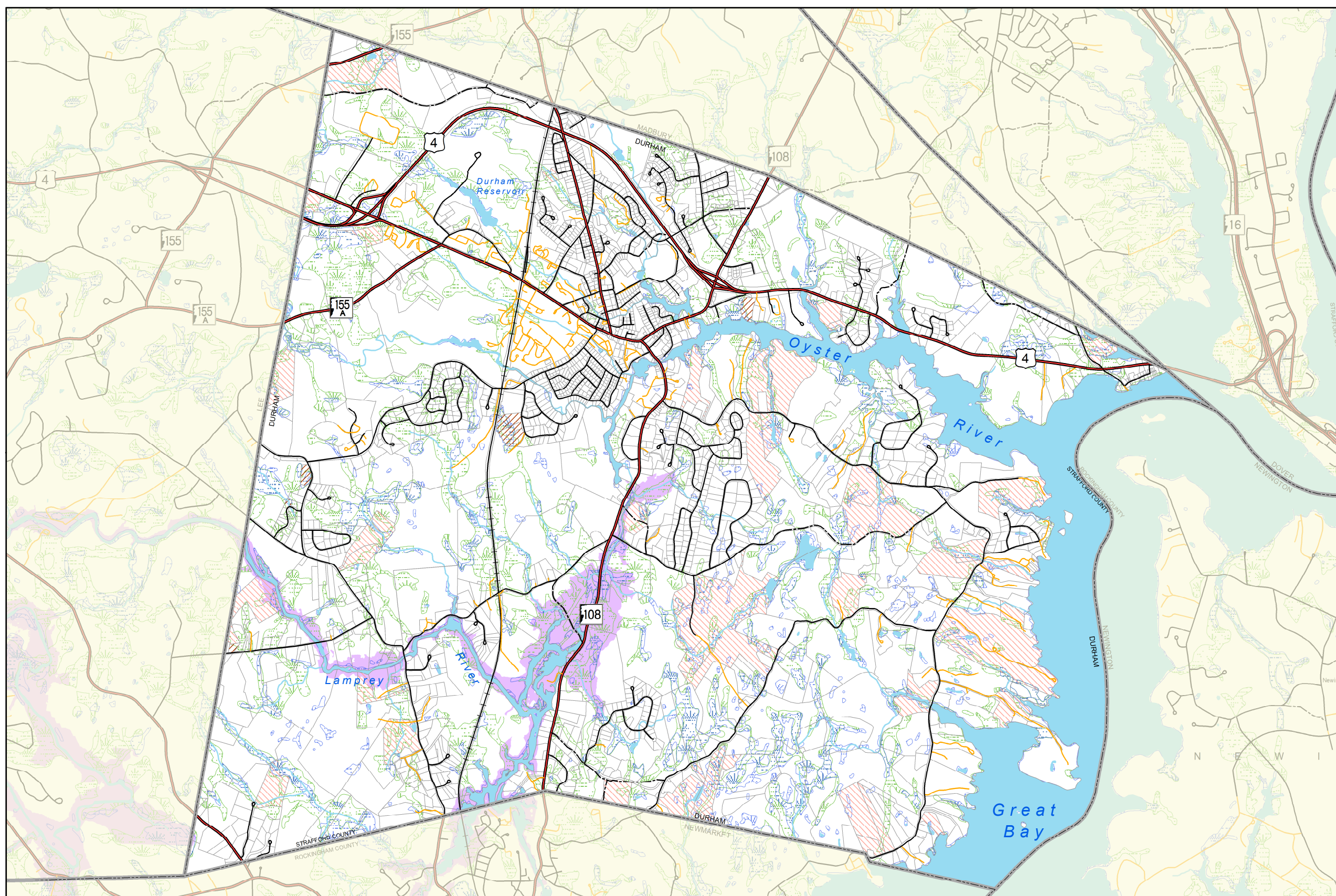


Town of Durham New Hampshire



2015 Master Plan Update
Figure M-4

Surface Water Resources



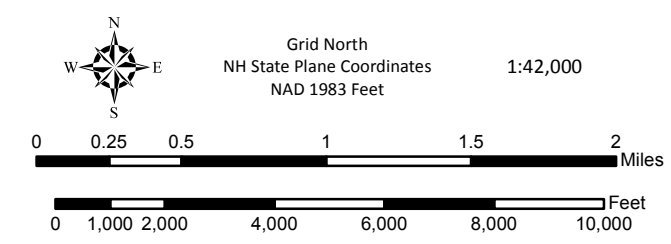
Legend

- Lamprey Floodplain Study Conventional Buildout 2100
- National Wetlands Inventory
- Hydric Soils
- Wetlands in Current Use**
 - Wetlands Only
 - Wetlands w/Multiple Current Uses

Data Sources
Base features are from USGS 1:24,000 scale Digital Line Graphs, as archived in the GRANIT database. Digital data in NH GRANIT represent the efforts of the contributing agencies to record information from the cited source materials. Complex Systems Research Center (CSRC), under contract to the Office of Energy & Planning (OEP), and in consultation with cooperating agencies, maintains a continuing program to identify and correct errors in these data. Neither OEP nor CSRC make any claim as to the validity or reliability or to any implied uses of these data.



Current Use data was provided by the Town of Durham, 2013. 100yr Floodplain data was created by the Federal Emergency Management Agency. Floodplain data for the Lamprey River was created by Complex Systems Research Center, 2012. National Wetlands Inventory data were created by the US Fish and Wildlife Service, 2000. Hydric Soils were derived from the Natural Resource Conservation Service Strafford County Soil Survey, 1975. Sea Level Rise data were created by Complex Systems Research Center, 2012.



Base Legend

- Municipal Boundary
- Tax Parcel Boundary
- Stream, River
- Lake, Pond, River
- Railroad
- Road Type**
 - State
 - Federal
 - Local
 - Not Maintained
 - Private

Prepared by **Strafford Regional Planning Commission**
150 Wakefield St, Suite 12, Rochester, NH 03867
T: (603) 994-3500 F: (603) 994-3504 Em: srpc@strafford.org
Surface Water Resources
Date: February 25, 2015
Path: G:\Requests\Members\Durham\MasterPlanMapping_Environmental\Chapter\MapDocs\Surface_Water_Resources_Map.mxd
Maps prepared by Strafford Regional Planning Commission are for planning purposes only.

