

Town of Durham New Hampshire



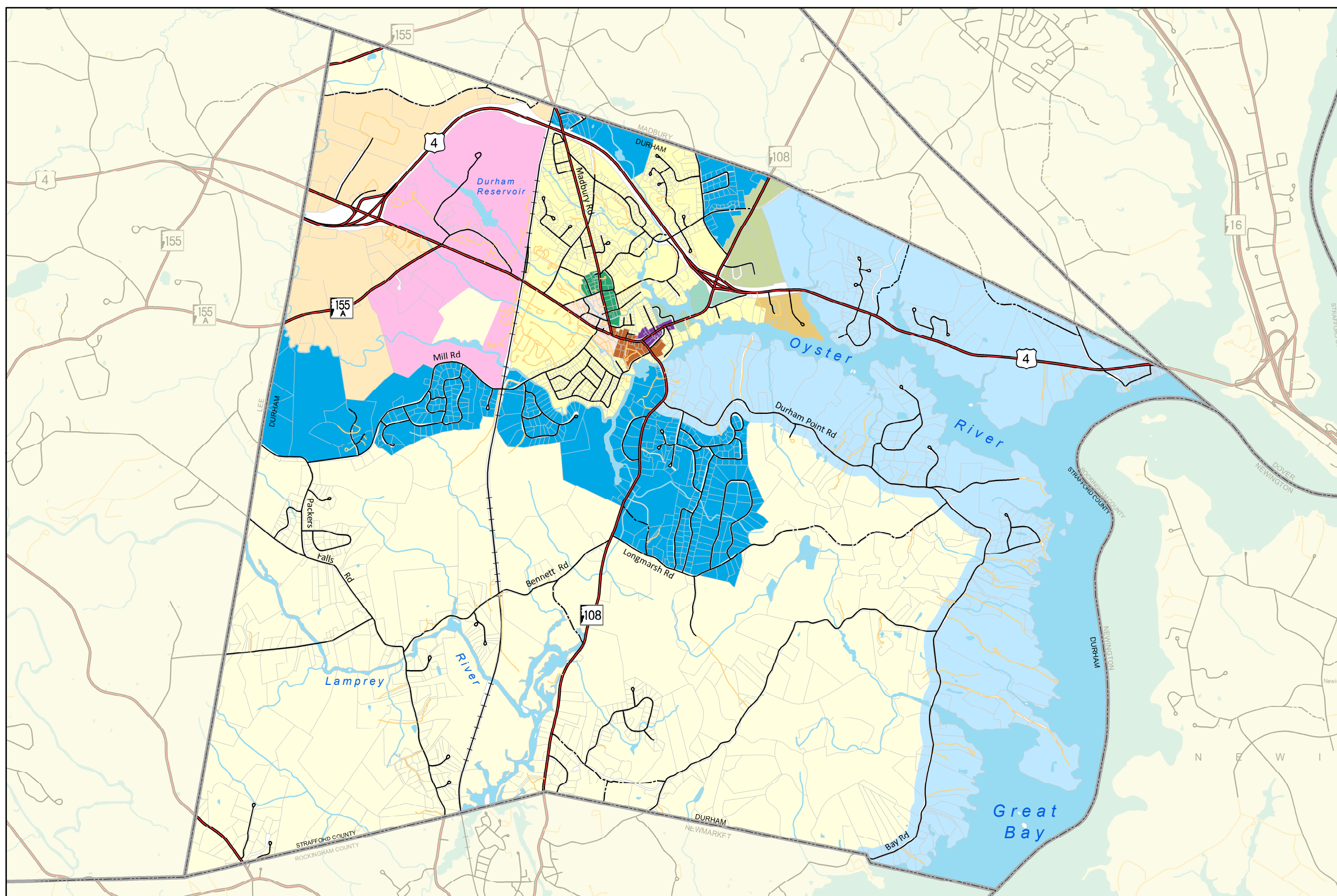
2015 Master Plan Update
Figure M-2

Zoning

Legend

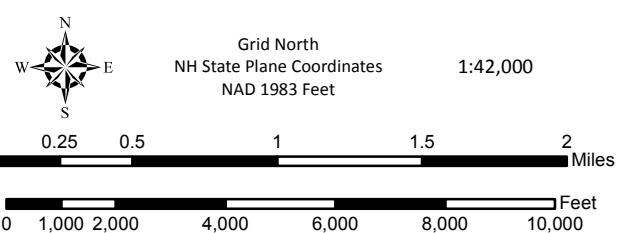
Zoning District

- Central Business
- Church Hill
- Coe's Corner
- Courthouse
- Durham Business Park
- Multi-unit Dwelling/office Research
- Office & Research & Light Ind.
- Office & Research Rt. 108
- Professional Office
- Residence A
- Residence B
- Residence C
- Rural



Data Sources

Base features are from USGS 1:24,000 scale Digital Line Graphs, as archived in the GRANIT database. Digital data in NH GRANIT represent the efforts of the contributing agencies to record information from the cited source materials. Complex Systems Research Center (CSRC), under contract to the Office of Energy & Planning (OEP), and in consultation with cooperating agencies, maintains a continuing program to identify and correct errors in these data. Neither OEP nor CSRC make any claim as to the validity or reliability or to any implied uses of these data.



Base Legend

- | | |
|---------------------|----------------|
| Municipal Boundary | State |
| Tax Parcel Boundary | Federal |
| Stream, River | Local |
| Lake, Pond, River | Not Maintained |
| Railroad | Private |

Prepared by **Strafford Regional Planning Commission**
150 Wakefield St, Suite 12, Rochester, NH 03867
T: (603) 994-3500 F: (603) 994-3504 Em: srpc@strafford.org

Land Use
Date: March 3, 2015
Path: G:\Requests\Members\Durham\MasterPlanMapping_Environmental\Chapter\MapDocs\LandUse.mxd

Maps prepared by Strafford Regional Planning Commission are for planning purposes only.

