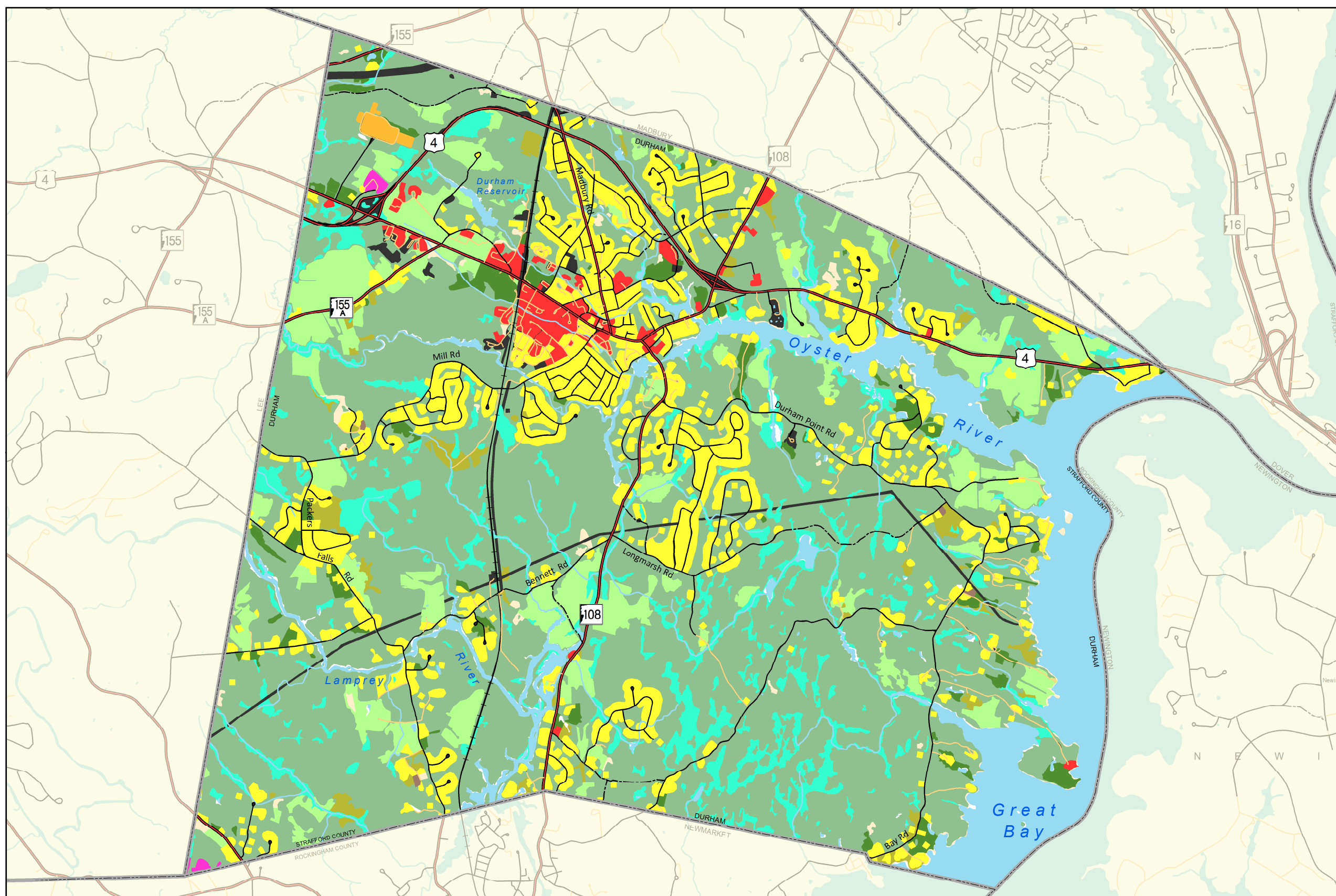


# Town of Durham New Hampshire



2015 Master Plan Update  
Figure M-16

## Land Use



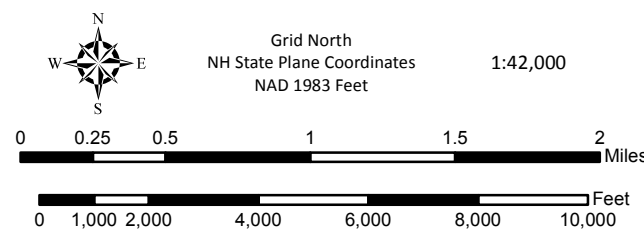
### Legend

#### Land Use 2010

- Residential
- Commercial, Services, Institutional
- Industrial
- Transportation, Communications, Utilities
- Industrial/Commercial Complexes
- Mixed Use
- Outdoor and Other Built-Up Land
- Vacant
- Agricultural
- Transitional
- Forest
- Wetlands
- Non-vegetated

### Data Sources

Base features are from USGS 1:24,000 scale Digital Line Graphs, as archived in the GRANIT database. Digital data in NH GRANIT represent the efforts of the contributing agencies to record information from the cited source materials. Complex Systems Research Center (CSRC), under contract to the Office of Energy & Planning (OEP), and in consultation with cooperating agencies, maintains a continuing program to identify and correct errors in these data. Neither OEP nor CSRC make any claim as to the validity or reliability or to any implied uses of these data.



### Base Legend

- |                    |                |
|--------------------|----------------|
| Municipal Boundary | Road Type      |
| Stream, River      | State          |
| Lake, Pond, River  | Federal        |
| Railroad           | Local          |
|                    | Not Maintained |
|                    | Private        |

Prepared by **Strafford Regional Planning Commission**  
 150 Wakefield St, Suite 12, Rochester, NH 03867  
 T: (603) 994-3500 F: (603) 994-3504 Em: srpc@strafford.org  
**Land Use**  
 Date: March 3, 2015  
 Path: G:\Requests\Members\Durham\MasterPlanMapping\_Environmental\Chapter\MapDocs\LandUse.mxd  
 Maps prepared by Strafford Regional Planning Commission are for planning purposes only.

