

Town of Durham New Hampshire



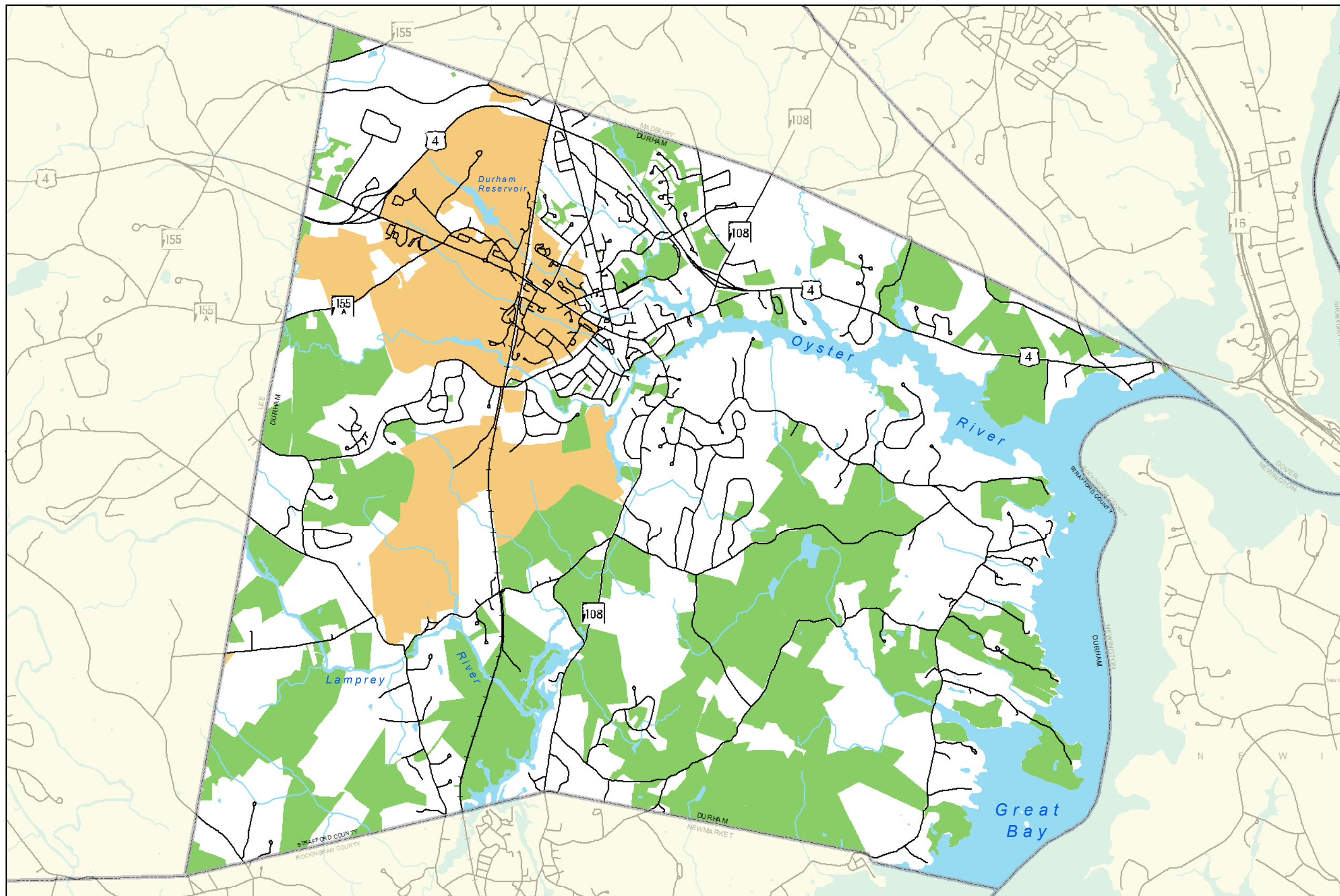
2017 Master Plan Update

Figure M-22

Building Constraints

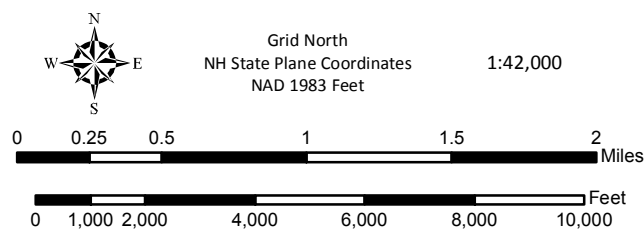
Legend

- UNH Owned Property
- Conservation Land
- Water Resources**
- Stream, River
- Lake, Pond, River
- Transportation Features**
- Roads (NHDOT)
- Railroad



Data Sources

Base features are from USGS 1:24,000 scale Digital Line Graphs, as archived in the GRANIT database. Digital data in NH GRANIT represent the efforts of the contributing agencies to record information from the cited source materials. Complex Systems Research Center (CSRC), under contract to the Office of Energy & Planning (OEP), and in consultation with cooperating agencies, maintains a continuing program to identify and correct errors in these data. Neither OEP nor CSRC make any claim as to the validity or reliability or to any implied uses of these data.



Prepared by **Strafford Regional Planning Commission**
150 Wakefield St, Suite 12, Rochester, NH 03867
T: (603) 994-3500 F: (603) 994-3504 Em: srpc@strafford.org

Base Map
Date: January 22, 2018
Path: M:\Region\Towns\dur\2017 Future Land Use\Maps\
Appendix maps\Constraints.mxd

Maps prepared by Strafford Regional Planning Commission
are for planning purposes only.

