

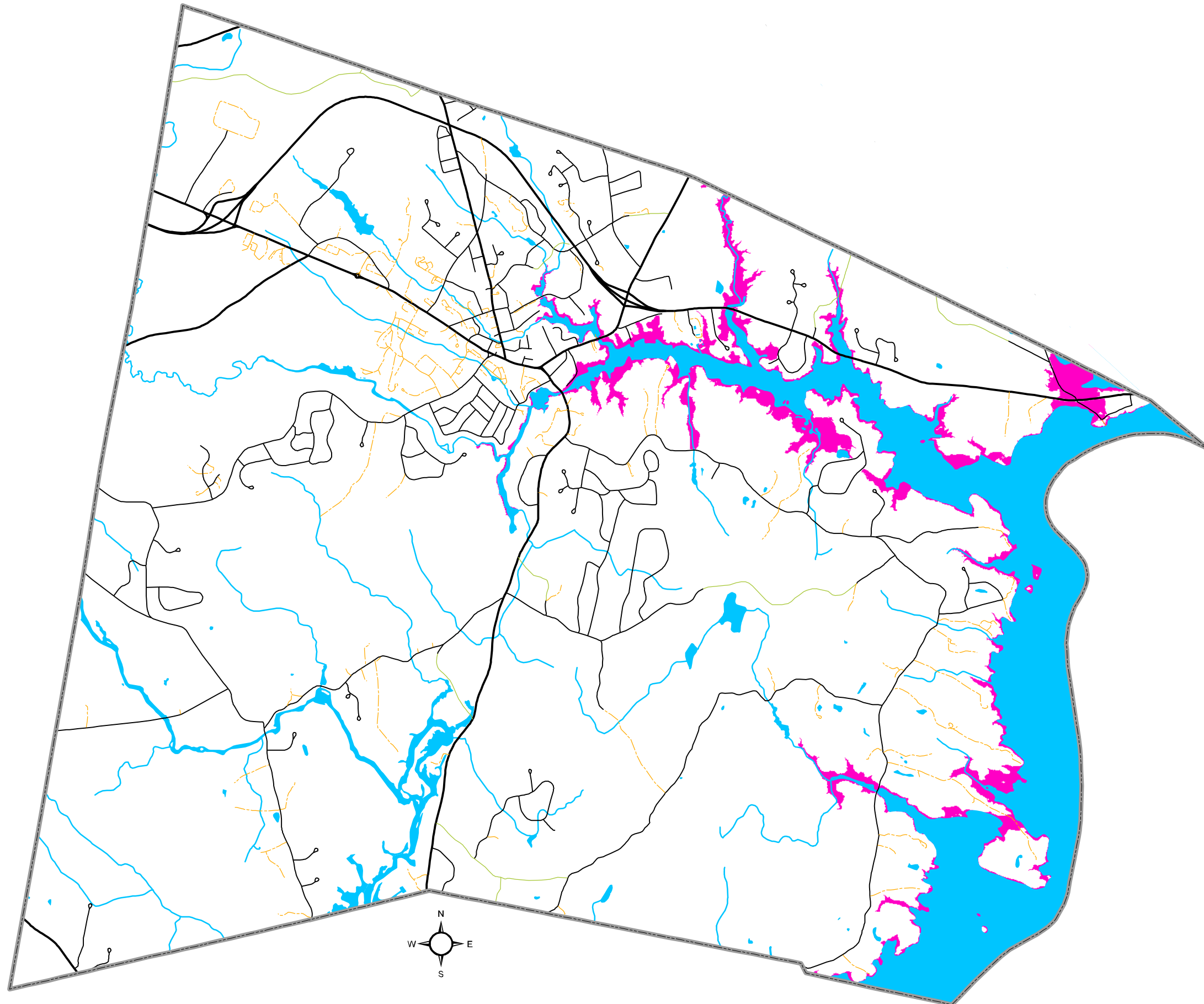
Town of Durham



Advisory Climate Change Risk Areas

Legend

- Advisory Climate Change Risk Areas
- Political Features**
 - Digital Tax Parcel (2017)
 - Municipal Boundary
- Water Features**
 - Stream, River
 - Lake, Pond, Estuary
- Roads**
 - State
 - Local
 - Private
 - Not Maintained



Map Feature Notes

The "Advisory Climate Change Risk Areas" data represents inundation of the 2100 intermediate-high emissions scenario (moderate), or the extent of 3.9' of sea level rise plus storm surge. This data was obtained from NH GRANIT, Earth Systems Research Center, University of New Hampshire, and was derived from the coastal NH LiDAR collection of 2011.

Prepared by the **Stafford Regional Planning Commission**
150 Wakefield St. Suite 12 Rochester, NH 03867
T: (603) 994-3500 E: srpc@stafford.org

Date: 2/21/2018 Author: RM
Path: M:\Region\Project_Special_Merit_2017\Technical_Assistance_Grants\
Durham\Maps\AdvisoryClimateRiskAreas.mxd

Data Sources

Base features from NH GRANIT database. Digital data in NH GRANIT represent the efforts of the contributing agencies to record information from the cited source materials. Earth Systems Research Center (ESRC), under contract to the Office of Energy and Planning (OEP), and in consultation with cooperating agencies, maintains a continuing program to identify and correct errors in these data. Neither OEP nor ESRC make any claim as to the validity or reliability or to any implied uses of these data.

Digital tax parcels taken from SRPC database. Data should be used for planning purposes only. Data were derived from various sources and were updated at different timeframes, with varying levels of accuracy. Please notify SRPC of any errors or omissions.