

Image 1: Front elevation framing plan showing fenestration and chimneys.



Image 2: Side elevation framing plan showing fenestration.

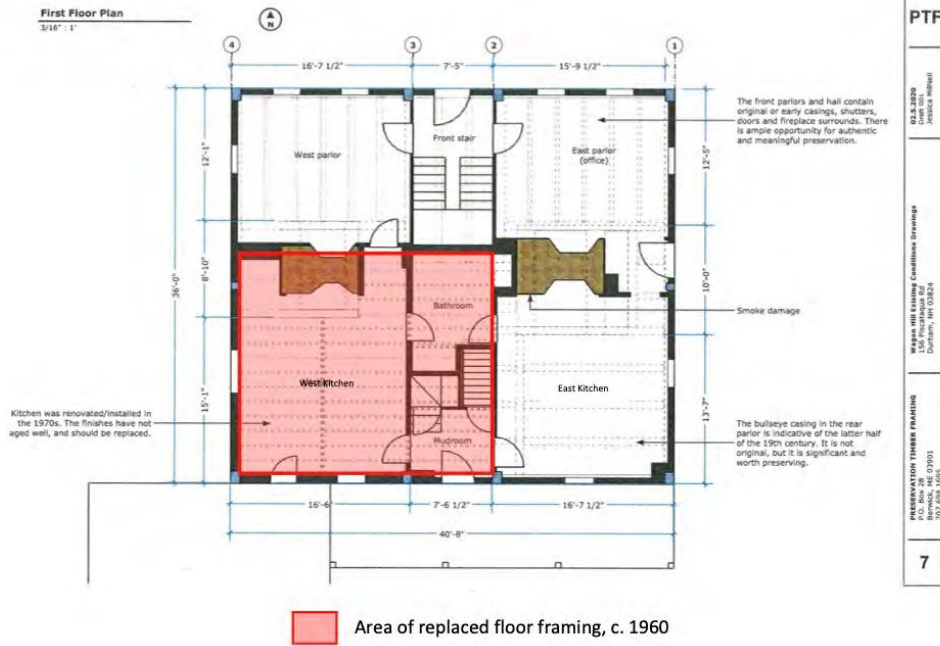


Image 3: First-floor plan with room designations

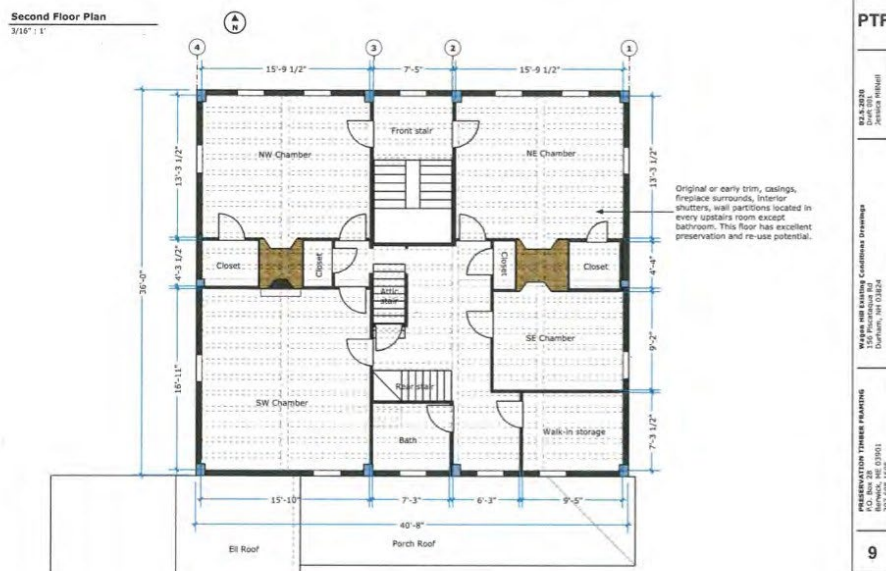


Image 4: Second-floor plan with room designations.



Image 5: Front elevation of the main house looking south.



Image 6: View of east elevation looking west.



Image 7: South elevation of the building complex looking north.



Image 8: View of the building complex looking northeast



Image 9: View of basement looking south.



Image 10: View of basement looking northwest showing the west chimney base, added brick room partition and steel lolly columns.



Image 11: View of basement looking southwest, showing rubble granite.

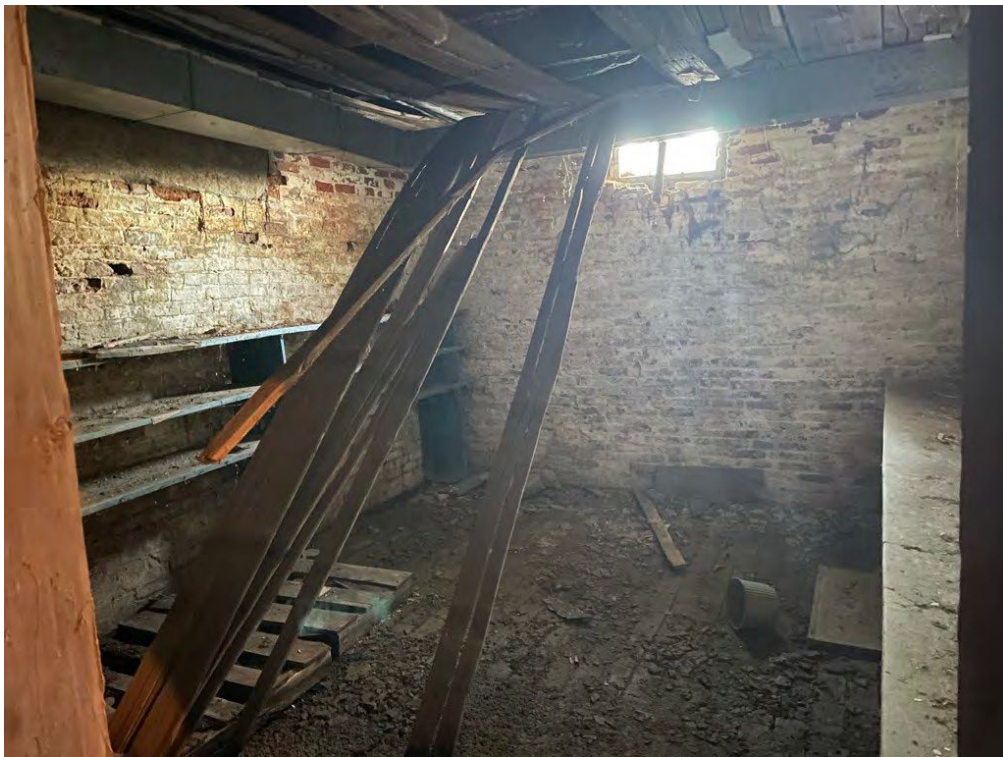


Image 12: View of basement dairy room looking northeast.



Image 13: View of added brick partition leading to the dairy, looking northeast.



Image 14: View of the attic looking east.



Image 15: View of the stairs leading to the attic scuttle looking north.



Image 16: View of the ell interior looking northeast.





Image 17: View of the roof framing of the original portion of the ell looking north from the modern portion of the ell.



Image 18: View of the front stair hall looking southwest.



Image 19: View of the northeast parlor looking southwest.



Image 20: View of the northwest parlor looking southeast.



Image 21: View of the east kitchen looking north.



Image 22: View of the west kitchen looking north.



Image 23: Image of the back stairs/ mudroom looking west.



Image 24: View of the first-floor bathroom looking east.



Image 25: View of the center hall stairs, second floor, looking down and south.



Image 26: View of the northeast chamber looking southeast.



Image 27: View of the northwest chamber looking southwest.



Image 28: View of southeast middle chamber looking east.



Image 29: View of the southeast chamber looking east.



Image 30: View of southwest chamber looking north.



Image 31: View of second-floor rear stair hall looking northwest.

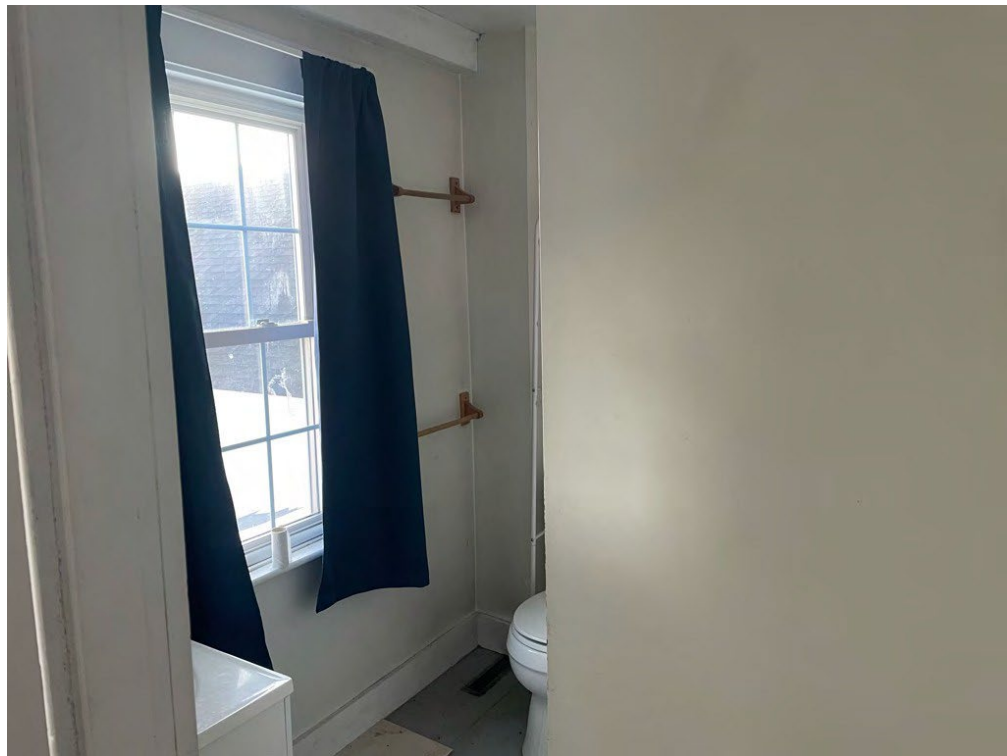


Image 32: View of the second-floor bathroom looking southwest.





Image 33: View of basement, southwest corner looking west, showing replaced floor framing.



Image 34: View of typical rising damp in basement brick elements.



Image 35: Detail of east chimney showing the stack extension on top of the original corbel, and old water staining.



Image 36: Detail of the roof, main house, south elevation, showing shingle repairs.



Image 37: Detail of cornice return and intersection of the main house to the ell, west elevation, showing water-related damage due to poor flashing and drainage.



Image 38: Detail of the front entrance showing decay in original wooden elements and deflection of the stone steps.



Image 39: View of the porch looking north, showing downward settling to the east.



Image 40: Detail of the porch showing downward settling and decay of wooden elements.



Image 41: Detail of the porch ceiling looking west, showing mold growth and warping due to past water infiltration.



Image 42: Detail of the west chimney base in the basement showing typical brick deterioration from rising damp.



Image 43: View of the east chimney stack looking southwest, showing typical, minor mortar loss.



Image 44: Detail of foundation stone joint showing typical mortar loss and Spray foam repair.



Image 45: View of the west elevation foundation, main house, showing overgrowth.



Image 46: View of the south basement wall, west end, looking west.



Image 47: View of the north foundation wall, west end, looking west.



Image 48: View of the west elevation of the ell's foundation, showing variable materials and conditions.





Image 49: Detail of the basement floor showing compacted soil from past water infiltration, and degraded floor mats.



Image 50: View of the entrance to the ell apartment showing collapsed drywall from a past leak.



Image 51: Detail of a basement window, east elevation, showing encroaching grade and decay of the window elements.



Image 52: View of the west elevation looking east, showing overgrowth.

