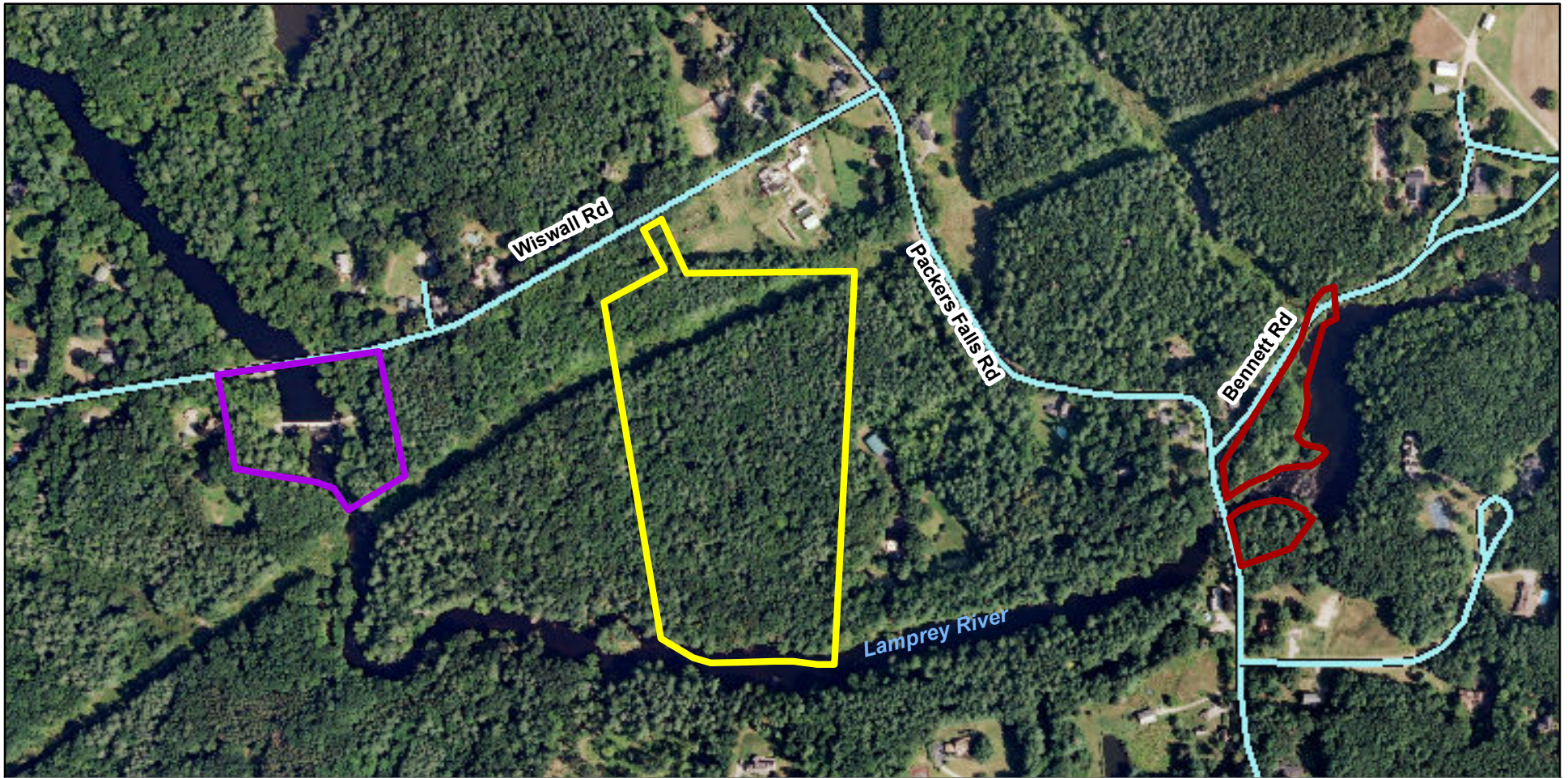




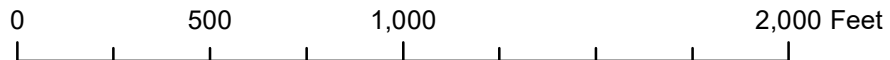
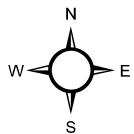


Wiswall Dam and John Hatch Park	
Acres/Location	5 acres Wiswall Road
Tax Map #	Tax Map 17 Lot 7
Directions	From the Durham Town Hall follow Route 108 south approximately 1.6 miles. Turn left onto Bennett Road and follow to the end. Take a right onto Packers Falls Road 0.3 miles to a stop sign. Take a left onto Wiswall Road. The parking area for the Wiswall Dam/John Hatch Park is 0.4 miles on the left.
Property Deeds	<ul style="list-style-type: none"> • Deed: 1965: BK 805 PG 313 • Deed: 1982: BK 1084 PG 134 • Deed: 2008: BK 3666 PG 371 • Deed: 2003: BK 2871 PG 971 • Deed: 1956: BK 661 PG 393 • Deed: 1955: BK 652 PG 58
Property Surveys	<ul style="list-style-type: none"> • Survey: 2008 Plan 95-15 • Survey: 2001, 2002: by Atlantic Survey, unrecorded • Survey: 1980: Plan 21-23 • Survey: 1959, 1965: by Davis, unrecorded
Easement or Deed Restriction	No restrictions in deeds
Amenities	Trail leads from the Wiswall dam along the Lamprey River; crosses private property
Recreational Opportunities	<ul style="list-style-type: none"> • Hiking • Cross-country skiing and snowshoeing • Dog-walking (dogs on-leash/under control; pick up dog waste) • Fishing • Birdwatching/Nature observation
Use Restrictions	<ul style="list-style-type: none"> • Open dawn to dusk • No hunting or fireworks • No motorized wheeled vehicles (ATVs, trucks, dirt bikes) • No horseback riding • No campfires or camping • Carry in, Carry out • Do not disturb plants, animals, historical or cultural features



-  Wiswall Dam-John Hatch Park
-  Weeks Lot
-  Packers Falls Park
-  Roads

Locus Map
Wiswall Dam-John Hatch Park
Weeks Lot, and
Packers Falls Park
Durham, NH



Boundaries and features are approximate.
 Conservation lands, roads, and background
 (2017 1-ft high resolution) from NH GRANIT.
 Map by Ibis Wildlife Consulting. March 2021