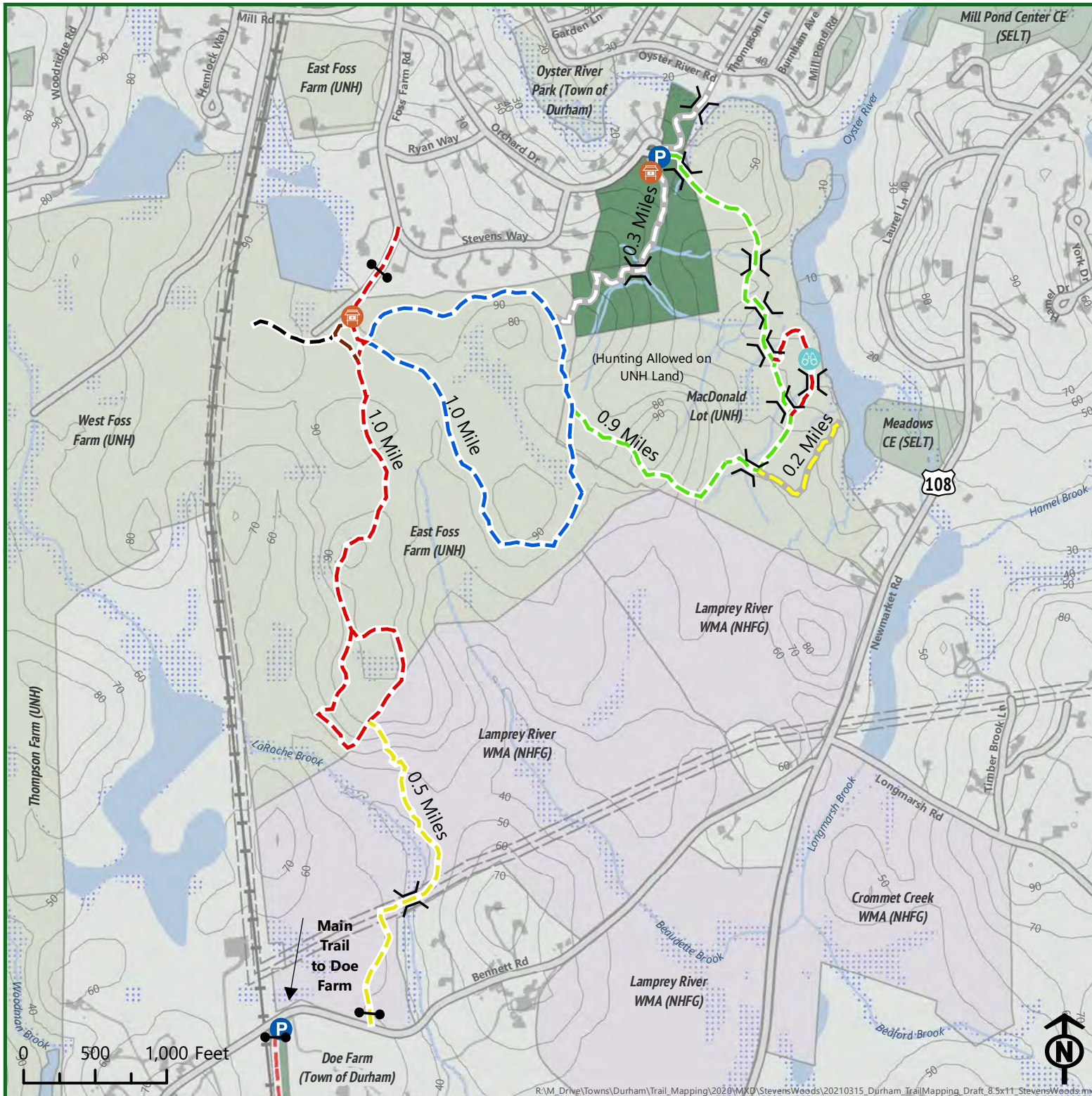


Stevens Woods	
<b>Acres/Location</b>	23 acres   Orchard Drive and Thompson Lane
<b>Tax Map #</b>	Map 6 Lot 2-43 and Map 15 Lot 30
<b>Directions</b>	From Durham Town Hall, follow Mill Pond Road 0.3-miles to stop sign. Take right on Faculty Road, go 0.3-miles to Mill Road. Left on Mill Road, 0.5 miles (crossing Oyster River) to left onto Foss Farm Road. Immediate left onto Orchard Drive, 0.4 miles to cul-de-sac. Parking at trailhead. Stevens Woods also has a walking access via a new bridge across the Oyster River from Thompson Lane (no parking).
<b>Property Deeds</b>	<ul style="list-style-type: none"> <li>• Deed ORCSD to Durham: BK 4700 PG 334 (2019)</li> <li>• Easement Deed Durham to UNH: BK 4728 PG 191 (2020)</li> </ul>
<b>Property Surveys</b>	<ul style="list-style-type: none"> <li>• Boundary survey Plan #16-52 (1976)</li> <li>• Boundary survey Plan Pocket 11 Folder 3 Plan 43 (1972)</li> <li>• Easement Plan Durham to UNH: Plan #12027 (2019)</li> </ul>
<b>Easement or Deed Restriction</b>	<ul style="list-style-type: none"> <li>• Deed from ORCSD: maintained in perpetuity as open space...</li> <li>• Easement Deed Durham to UNH: Grants ROW across 0.36 ac to UNH from Orchard Drive to UNH MacDonald Lot for management, education, research</li> <li>• Trails Agreement with NHFG: Durham will maintain trail across Beaudette parcel</li> </ul>
<b>Amenities</b>	Parking area, trail network, informational kiosk
<b>Recreational Opportunities</b>	<ul style="list-style-type: none"> <li>• Hiking and running</li> <li>• Cross-country skiing and snowshoeing</li> <li>• Mountain biking</li> <li>• Dog-walking (dogs on-leash/under control; pick up dog waste)</li> <li>• Fishing</li> <li>• Birdwatching/Nature observation</li> </ul>
<b>Use Restrictions</b>	<ul style="list-style-type: none"> <li>• Open dawn to dusk</li> <li>• No hunting or fireworks</li> <li>• No motorized wheeled vehicles (ATVs, trucks, dirt bikes)</li> <li>• No horseback riding</li> <li>• No campfires or camping without written permission; No camping or fires on Moat Island</li> <li>• Carry in, Carry out</li> <li>• Do not disturb plants, animals, historical or cultural features</li> </ul>



# Stevens Woods & Neighboring Lands

Durham, NH

Trail Map



## Discover Durham's Trails

### Points of Interest

- Kiosk
- Parking
- Scenic View
- Bridge
- Gate

### Map Features

- Stevens Woods
- NH Fish & Game Wildlife Management Areas (WMA)
- UNH Land
- Other Conservation Lands
- Roads
- Railroads
- Contours (10 Feet)
- Utilities Right-of-Way
- Rivers and Streams
- Lakes and Ponds
- Wetlands
- Impervious Surface

### PERMITTED USES



### PROHIBITED USES

- No camping, campfires, or fireworks.
- No alcohol, smoking, or drugs.
- No horseback riding.
- No motorized recreational vehicles.

### FRIENDLY REMINDERS

- Open dawn to dusk.
- Carry out what you carry in.
- Keep pets on a leash & pick up dog waste.
- Don't disturb plants, animals or cultural sites.
- Hunting Allowed on UNH and NHFG lands
- NO Hunting on Town of Durham lands

Map Date: March 2021  
Map Author: Strafford Regional Planning Commission, Jackson Rand  
**Funding Courtesy of the Durham Conservation Commission**  
Base features from NH GRANT database. SRPC does not make any claim as to the validity or reliability or to any implied uses of these data. Data should be used for planning purposes only. Data were derived from various sources and were updated at different timeframes, with varying levels of accuracy. Please notify SRPC of any errors or omissions.