

# Town of Durham New Hampshire

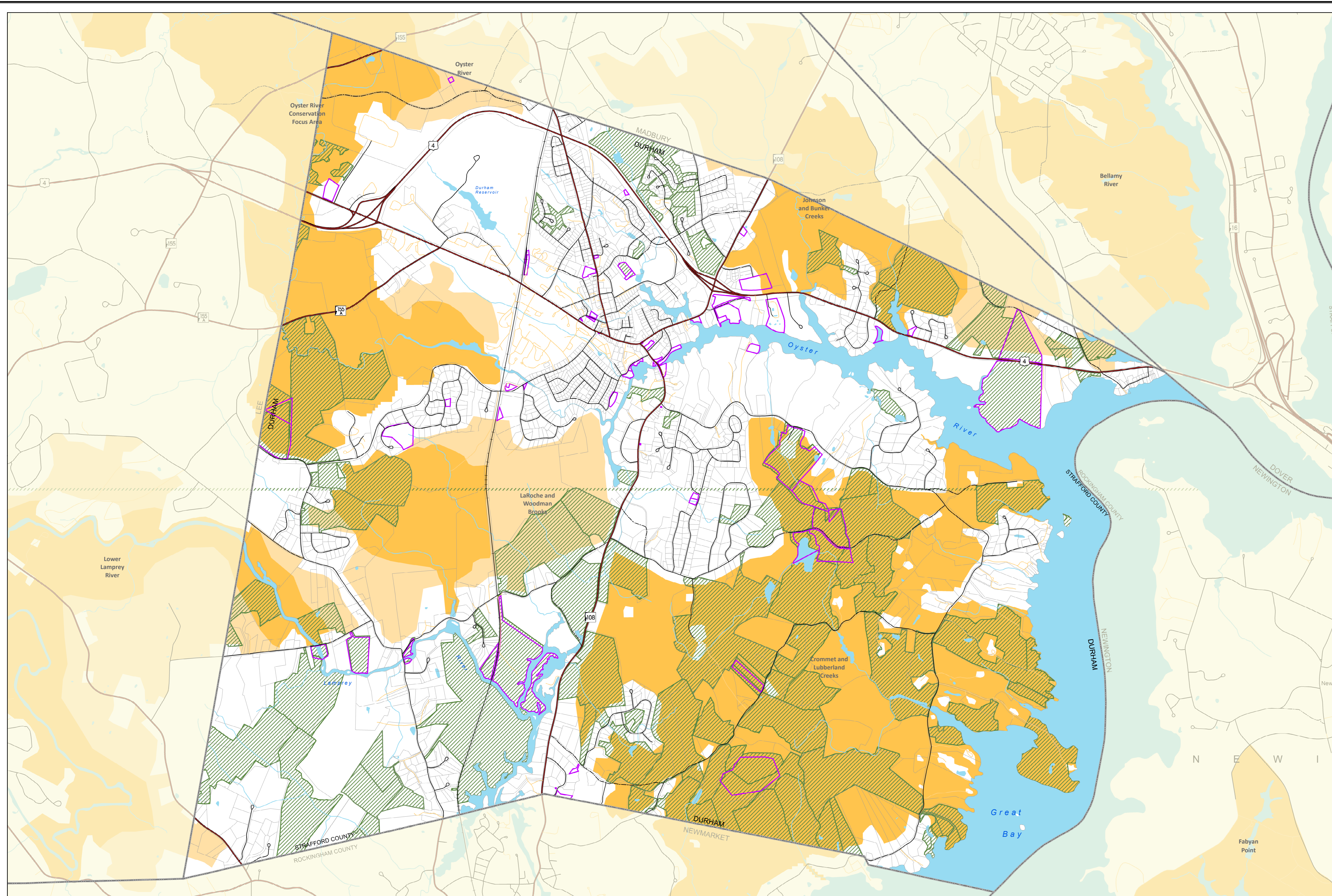


2015 Master Plan Update  
Figure M-10

## Conservation Lands

### Legend

- Permanently Conserved Land
- Town Lands
- Conservation Plan Focus Areas**
- Core Area
- Supporting Landscape

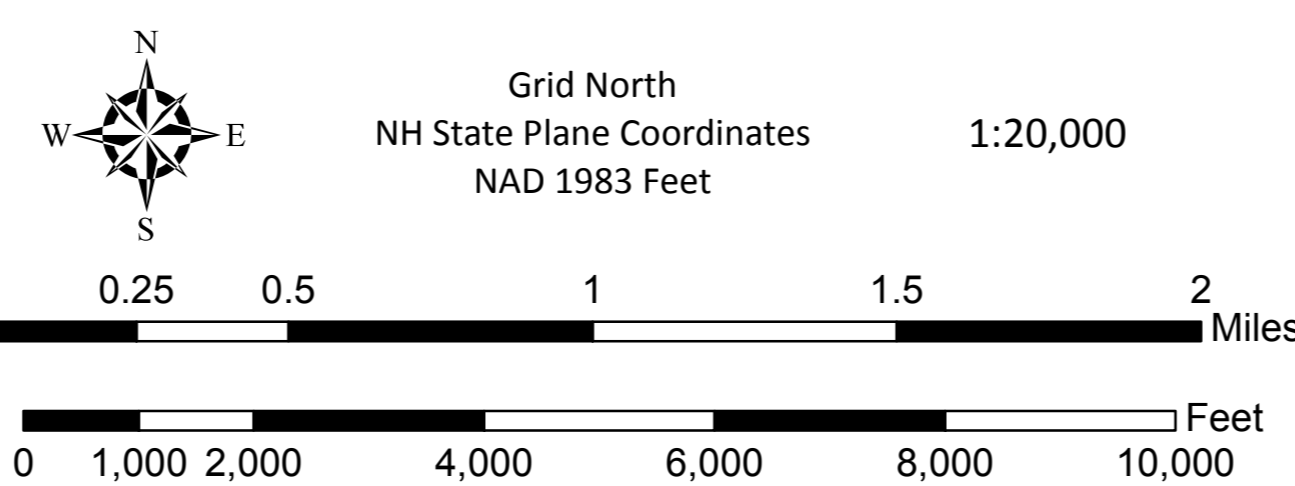


#### Data Sources

Base features are from USGS 1:24,000 scale Digital Line Graphs, as archived in the GRANIT database. Digital data in NH GRANIT represent the efforts of the contributing agencies to record information from the cited source materials. Complex Systems Research Center (CSRC), under contract to the Office of Energy & Planning (OEP), and in consultation with cooperating agencies, maintains a continuing program to identify and correct errors in these data. Neither OEP nor CSRC make any claim as to the validity or reliability or to any implied uses of these data.



Conservation Focus Area boundaries obtained from "The Land Conservation Plan for New Hampshire's Coastal Watersheds" (<http://des.nh.gov/organization/commissioner/pip/publications/wd/documents/r-wd-06-43.pdf>)



#### Base Legend

- Municipal Boundary
- Tax Parcel Boundary
- Stream, River
- Lake, Pond, River
- Railroad
- State
- Federal
- Local
- Not Maintained
- Private

Prepared by **Strafford Regional Planning Commission**  
150 Wakefield St, Suite 12, Rochester, NH 03867  
T: (603) 994-3500 F: (603) 994-3504 Em: srpc@strafford.org  
**Conservation Lands**  
Date: May 15, 2015  
Path: G:\Requests\Members\Durham\MasterPlanMapping\_EnvironmentalChapter\MapDocs\ConservationLands\_FocusAreas\_large.mxd

Maps prepared by Strafford Regional Planning Commission are for planning purposes only.

