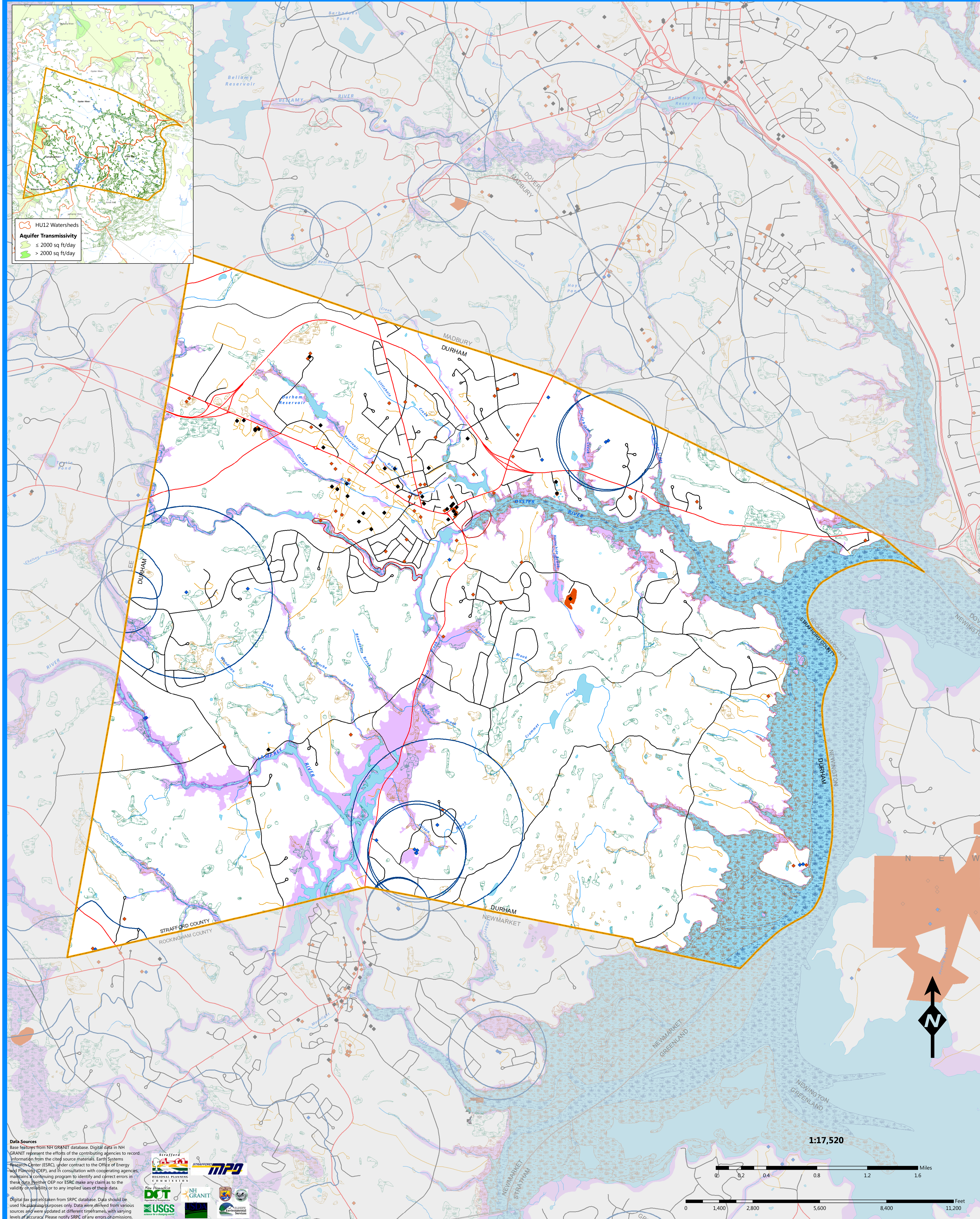
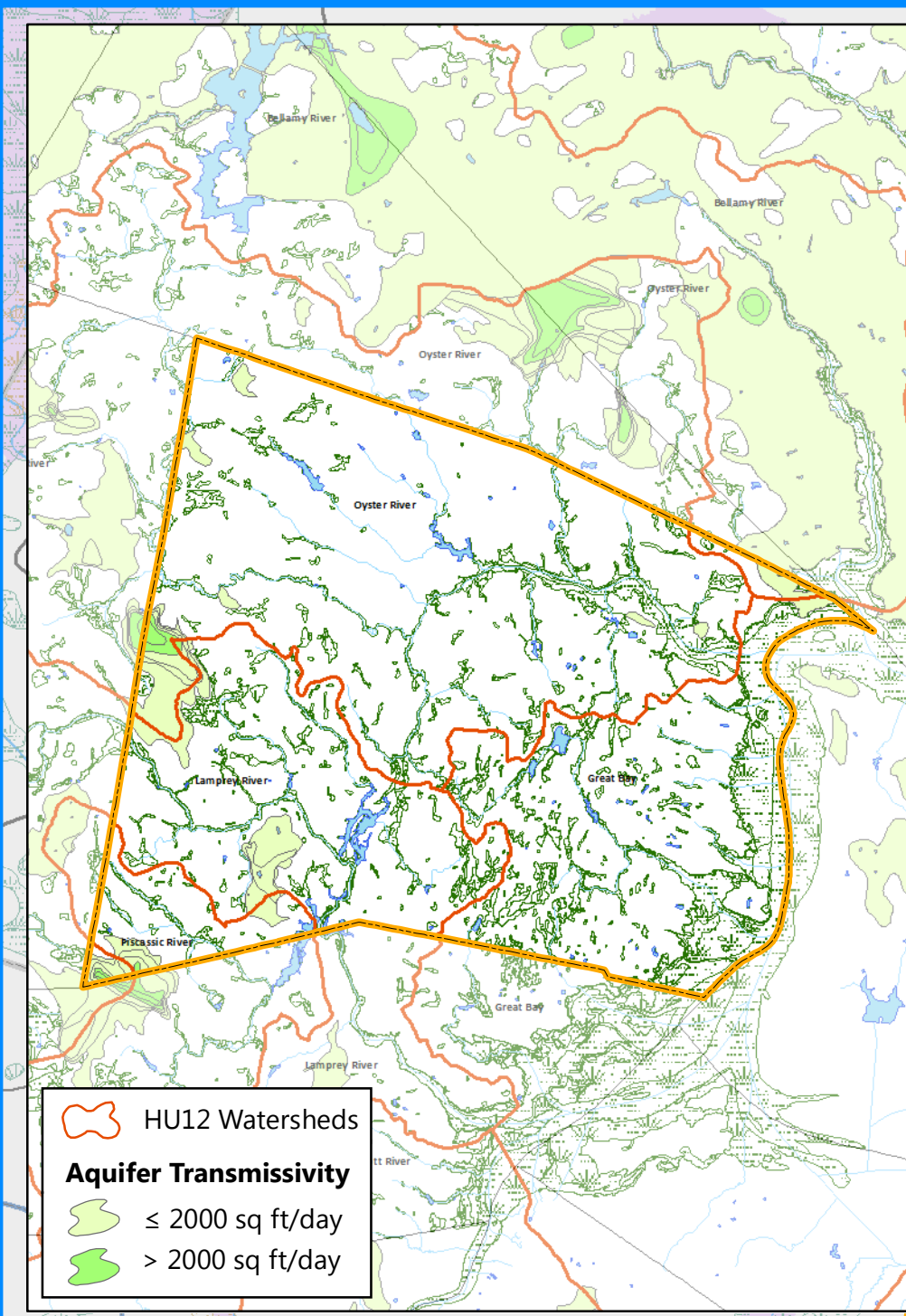


# TOWN OF DURHAM, NEW HAMPSHIRE: WATER RESOURCES

## Legend

- Dam Inundation Area
- 100-year Floodplain (FEMA)
- Public Water Supply Features (NHDES)**
  - Public Water Supply Sources
  - Wellhead Protection Areas
- Water Quality Hazards (NHDES)**
  - Underground Storage Tanks
  - Groundwater Contamination Hazard
  - Groundwater Contamination Hazard
- Wetland Type (NWI)**
  - Estuarine and Marine Deepwater
  - Estuarine and Marine Wetland
  - Freshwater Emergent Wetland
  - Freshwater Forested/Shrub Wetland
  - Riverine
  - Other
- Water Resources (USGS)**
  - Lake, Pond, River
- Political Features**
  - SRPC Municipal Boundary
  - NH Municipal Boundary
- Roads (NHDOT)**
  - State
  - Local
  - Private
  - Not Maintained



### Map Feature Notes

**Wetland Types (NWI)**  
*Estuarine and Marine Deepwater* include open water estuary, bay, sound, and open ocean. *Estuarine and Marine Wetland* are both vegetated and non-vegetated brackish saltwater marsh, shrubs, beach, bar, shoal, or flat. *Freshwater Emergent Wetland* include herbaceous marsh, fen, swale, and wet meadow. *Freshwater Forested/ShrubWetland* are forested swamp, wetland shrub bogs or wetlands. *Riverine* are river or stream channels. *Other* includes all other miscellaneous wetlands including farmed or saline seeped wetlands.

**Public Water Supply Features (NHDES)**  
*Public Water Supply Sources* represents wells, which are part of the public water supply system and are generally surface water intakes. *Wellhead Protection Areas* indicate the extent of the area in which surface and subsurface water flows toward and reaches a public water supply source. These areas are regulated by NHDES under the wellhead protection program (RSA 485-C).

**Data Sources**  
 Base features from NH GRANIT database. Digital data in NH GRANIT represent the efforts of the contributing agencies to record information from the cited source materials. Earth Systems Research Center (ESRC), under contract to the Office of Energy and Planning (OEP), and in consultation with cooperating agencies maintains a continuing program to identify and correct errors in these data. Neither OEP nor ESRC make any claim as to the validity, or reliability, or to any implied uses of these data.  
 Digital fax parcels taken from SRPC database. Data should be used for planning purposes only. Data were derived from various sources and were updated at different timeframes, with varying levels of accuracy. Please notify SRPC of any errors or omissions.

