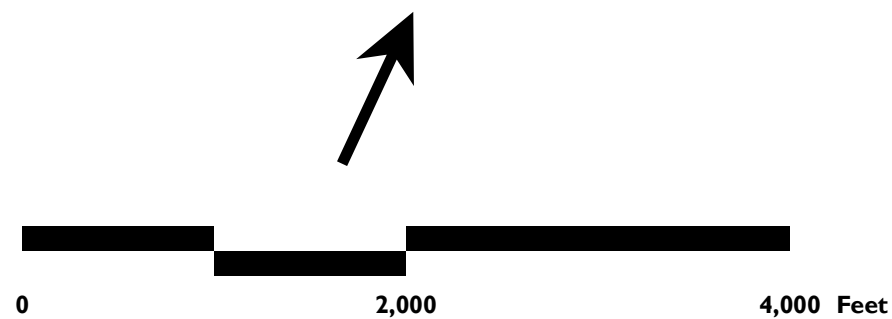




Source: \m\hbf\projects\2005\0505\GIS\ProjectSiteLocation.mxd

USGS Quads: Dover West, Newmarket

Figure 1
Project Location Map





- Legend**
- Ground Survey Point (VHB)
 - Transect Line
 - Probe Sampling Location
 - Sediment Sampling Location
 - 1' Contour Intervals
 - Index Contour (5 ft)

Note: Bathymetric Water Surface Elevation Based on Estimated Flow Condition and Tide Conditions (November 24, 2009).
 All Elevations Referenced to North American Vertical Datum 1988 (NAVD 88).
 Contour Intervals generated from the Bathymetric Survey and USDA NRCS LIDAR Mapping completed on 11/11/2008.
 Bathymetric contours reflect bottom elevations based on bathymetry data provided by HydroTerra Consulting.
 Probe and Sediment sampling locations as provided by HydroTerra*.
 * In the narrow river channel upstream of the pond, Probe and Sediment locations have a greater margin of error due to the effects of tree cover and satellite connections.

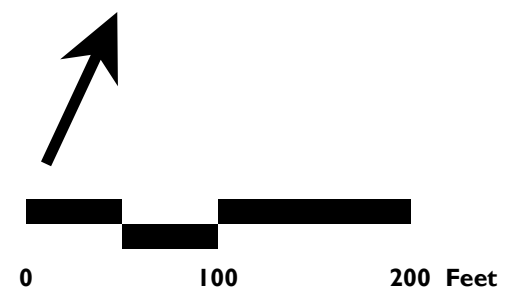


Figure 2
 Existing Base Conditions -
 Transect Layout and Topography
 (Sheet 1 of 2)
**Mill Pond
 Bathymetric Survey**
 2005 Imagery
 Durham, NH



Source: \\vm-bad\projects\2016\04\GIS\ProjectSitePlan.mxd

- Legend**
- Ground Survey Point (VHB)
 - Transect Line
 - Probe Sampling Location
 - Sediment Sampling Location
 - 1' Contour Intervals
 - Index Contour (5 ft)

Note: Bathymetric Water Surface Elevation Based on Estimated Flow Condition and Tide Conditions (November 24, 2009).
 All Elevations Referenced to North American Vertical Datum 1988 (NAVD 88).
 Contour Intervals generated from the Bathymetric Survey and USDA NRCS LIDAR Mapping completed on 11/11/2008.
 Bathymetric contours reflect bottom elevations based on bathymetry data provided by HydroTerra Consulting.
 Probe and Sediment sampling locations as provided by HydroTerra*.
 * In the narrow river channel upstream of the pond, Probe and Sediment locations have a greater margin of error due to the effects of tree cover and satellite connections.

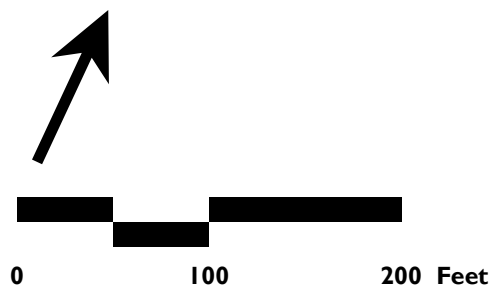
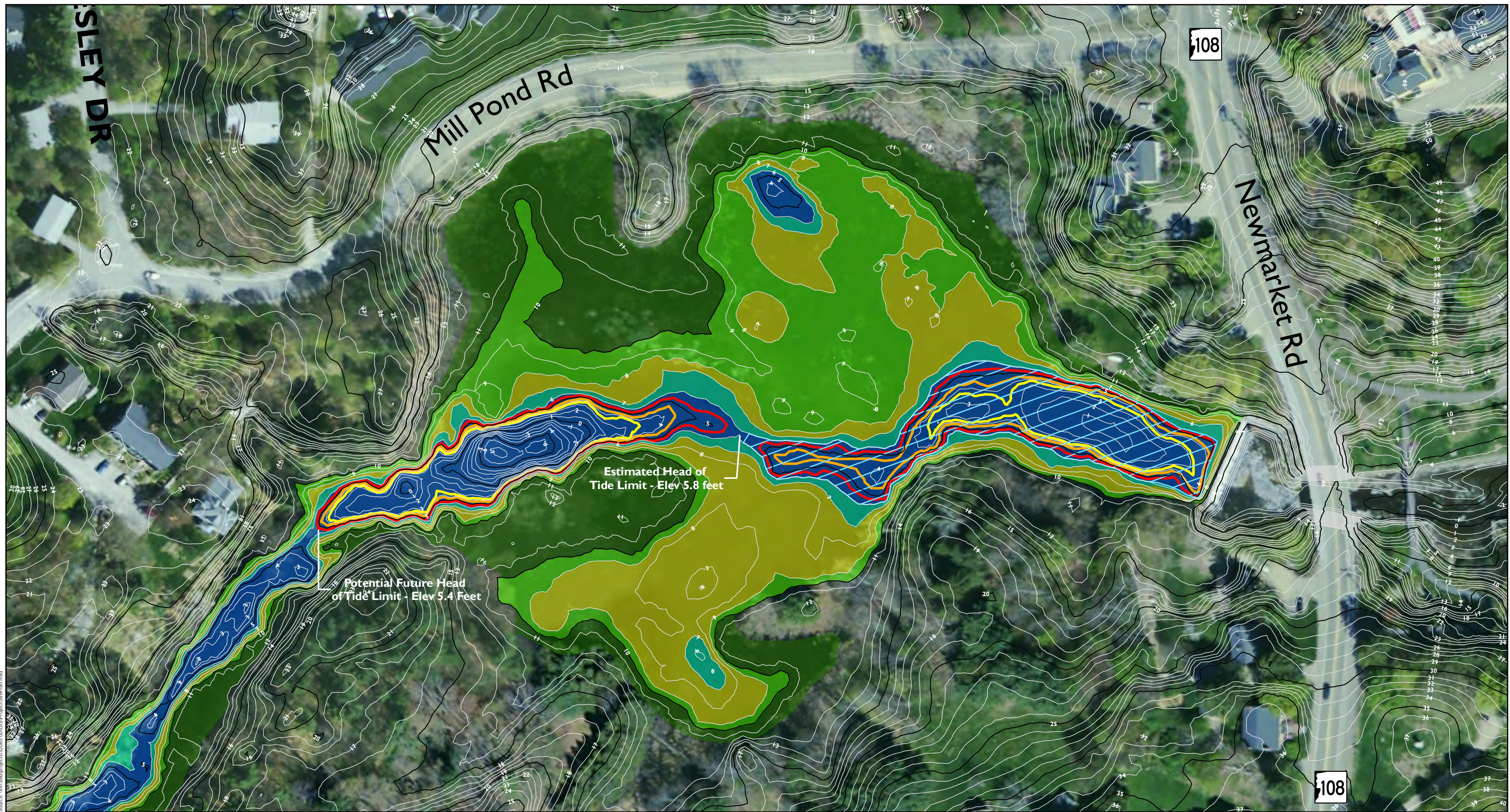


Figure 2
 Existing Base Conditions -
 Transect Layout and Topography
 (Sheet 2 of 2)
**Mill Pond
 Bathymetric Survey**
 2005 Imagery
 Durham, NH



- Legend**
- Anticipated Vegetation Transition Zones
- < 5' Open Water
 - 5'-6' Emergent Wetland
 - 6'-8' Freshwater Emergent Marsh/Shrub
 - 9'-10' Marsh/Shrub/Forested Wetland
 - >10' Shrub/Forested Wetland/Upland Transition

- Estimated Tidal Influenced Zones
- Anticipated High Water Lines
- Mean High Water 3.6' - Open Water/Low Marsh
 - Mean Higher High Water - 4.4' - Higher Low Marsh
 - Head of Tide Limit - 5.4' - High Marsh

Note: Bathymetric Water Surface Elevation Based on Flow Conditions on November 24, 2009. All Elevations Referenced to North American Vertical Datum 1988 (NAVD 88). Contour Intervals generated from the Bathymetric Survey and USDA NRCS LIDAR Mapping completed on 11/11/2008

The estimated Vegetation Communities are based on current bottom elevations, which are likely to change with potential subsidence and sedimentation. Vegetation species may also transition to more woody plant species over time.

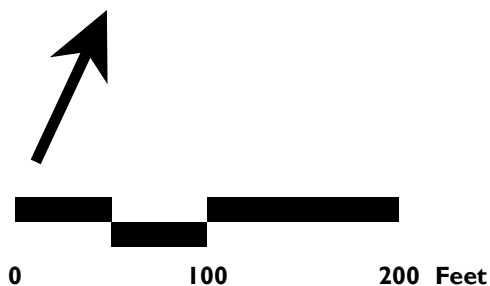
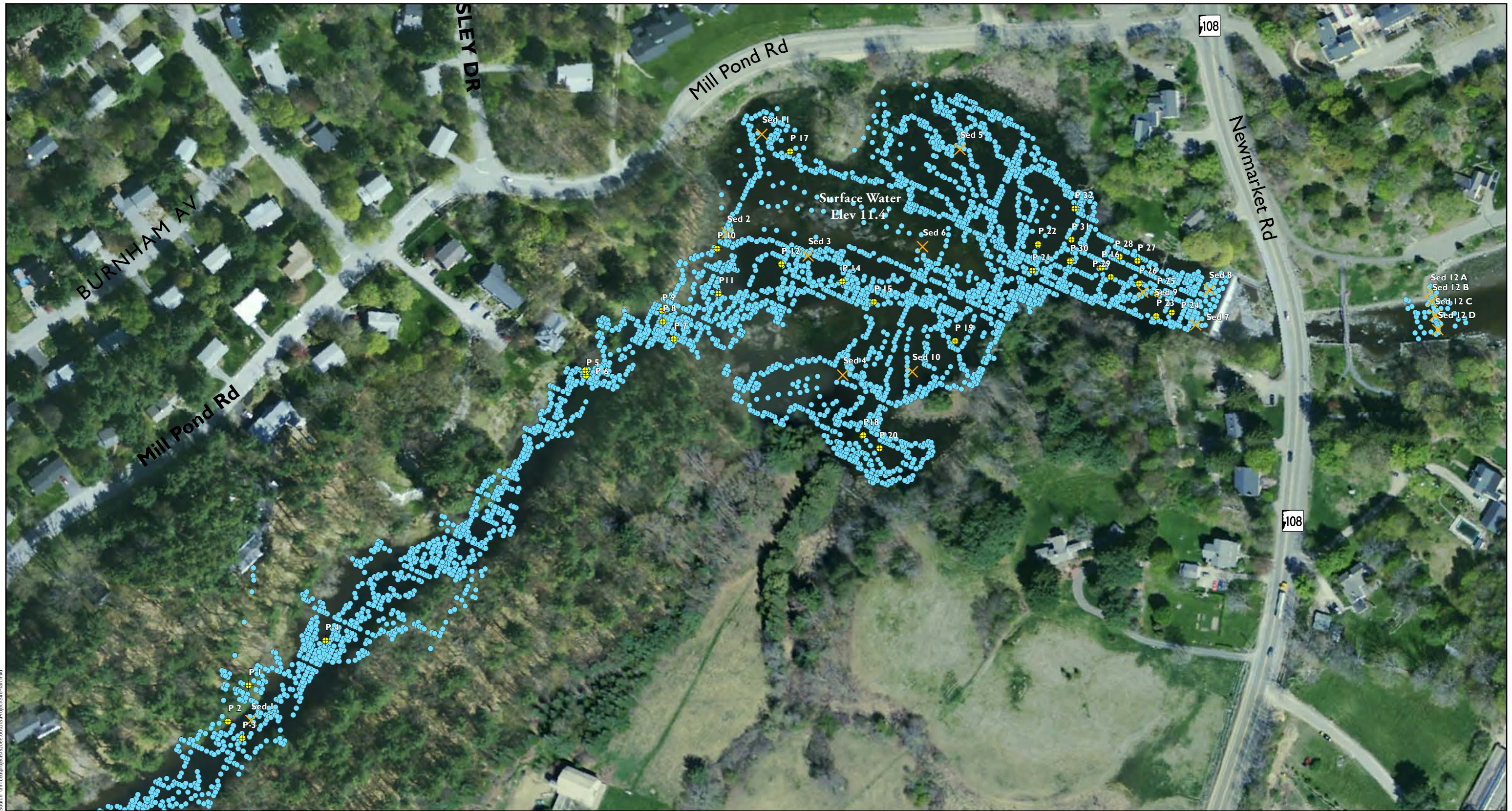


Figure 3
Anticipated Dewatered Conditions
(Sheet 1 of 1)

**Mill Pond
Bathymetric Survey**
2005 Imagery
Durham, NH



Source: \\m-hdr\projects\2006_08\GIS\Project\Sheets\Plan.mxd

- Legend**
- 2009_1207_ElevationsFinal
 - ⊕ Probe Sampling Location
 - × Sediment Sampling Location

Note: Bathymetric Water Surface Elevation Based on Estimated Flow Condition and Possibly Tide (November 24, 2009). All Elevations Referenced to North American Vertical Datum 1988 (NAVD 88). Probe and Sediment sampling locations provided by HydroTerra.

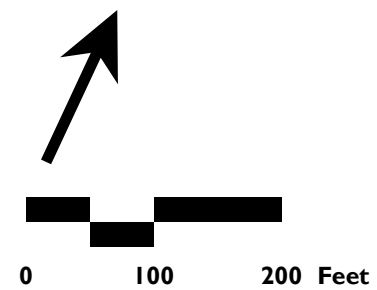


Figure 4
Bathymetric Sounding Locations
(Sheet 1 of 1)

**Mill Pond
Bathymetric Survey**
2005 Imagery
Durham, NH