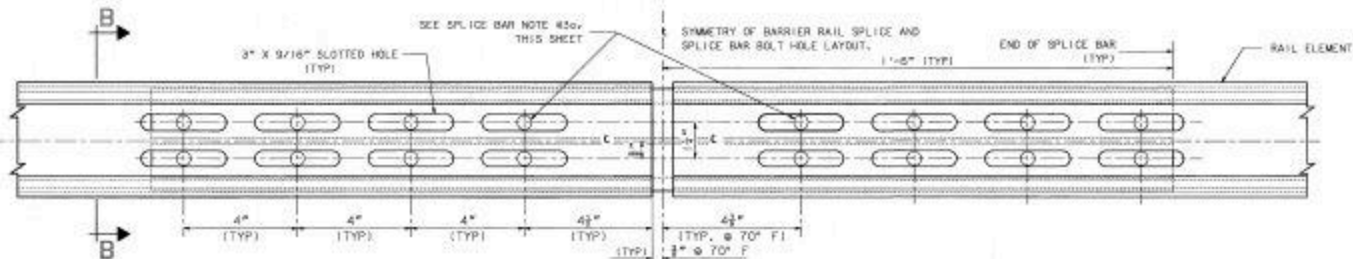
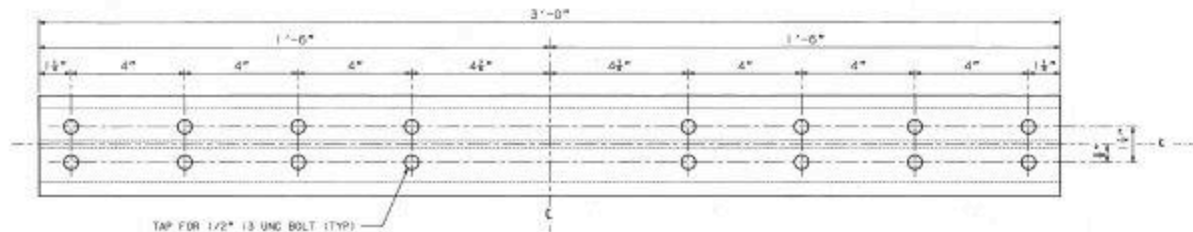


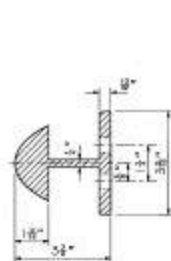
**RAIL SECTION B-B**  
HALF SIZE



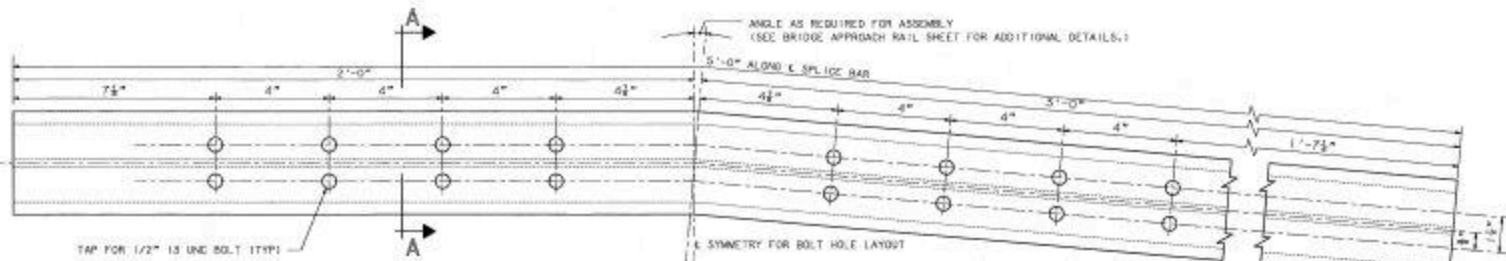
**STANDARD SPLICE ASSEMBLY DETAILS**  
BACK ELEVATION VIEW - HALF SIZE



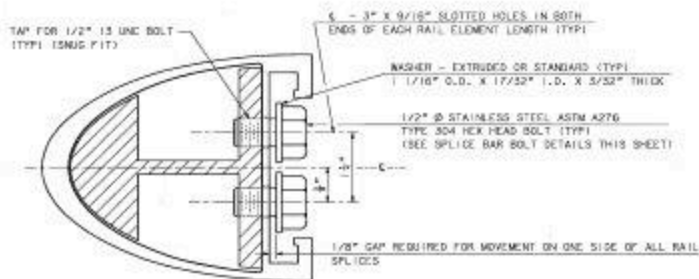
**SPLICE BAR FOR BRIDGE RAIL**  
BACK ELEVATION VIEW - HALF SIZE



**SECTION A-A**  
HALF SIZE



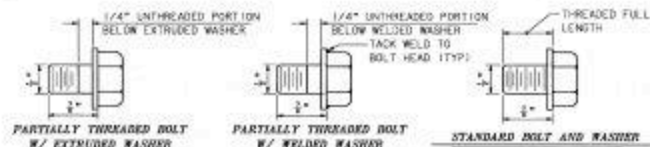
**SPLICE BAR FOR BRIDGE APPROACH RAIL**  
BACK ELEVATION VIEW - HALF SIZE



**BRIDGE RAIL & SPLICE BAR - ASSEMBLY DETAIL**  
SECTION VIEW - FULL SIZE

**SPLICE BAR NOTES**

- (1) FOR MATERIALS SPECIFICATIONS AND ADDITIONAL DETAILS, SEE THE BRIDGE RAIL AND BRIDGE APPROACH RAIL SHEETS (BRIDGE SHEETS 17, 18 AND 19 OF 23).
- (2) ALL BRIDGE RAILS AND BRIDGE APPROACH RAILS SHALL HAVE SLOTTED HOLES AT BOTH ENDS OF EACH RAIL ELEMENT.
- (3) THE SPLICE BAR SHALL BE ATTACHED TO THE RAIL ELEMENT AS FOLLOWS: THE STANDARD SPLICE FOR BOTH BRIDGE AND APPROACH RAILS SHALL BE FASTENED ON ONE SIDE USING STANDARD BOLTS & WASHERS TIGHTENED SECURELY. THE OTHER SIDE OF THE SPLICE BAR SHALL USE THE PARTIALLY THREADED BOLT WITH EITHER THE EXTRUDED WASHER OR THE WELDED WASHER, TIGHTENED SECURELY TO THE END OF THE THREADS, AND LEAVING A 1/8" GAP. THIS ALLOWS EXPANSION ON ONE SIDE OF THE JOINT.



**SPLICE BAR BOLT DETAILS**

FULL SIZE

STATE OF NEW HAMPSHIRE DEPARTMENT OF TRANSPORTATION * BUREAU OF BRIDGE DESIGN									
DRWING NO.	DATE	BY	CHKD.	DATE	BY	DATE	BY	DATE	BY
1001	1/2/88	JCA	1/2/88	1/2/88	JCA	1/2/88	JCA	1/2/88	JCA
BRIDGE RAIL SPLICE BAR DETAILS (ALUMINUM)									
BRIDGE SHEET 20 OF 25									
FILE NUMBER 5-9-6-2									
TOTAL SHEETS 67									