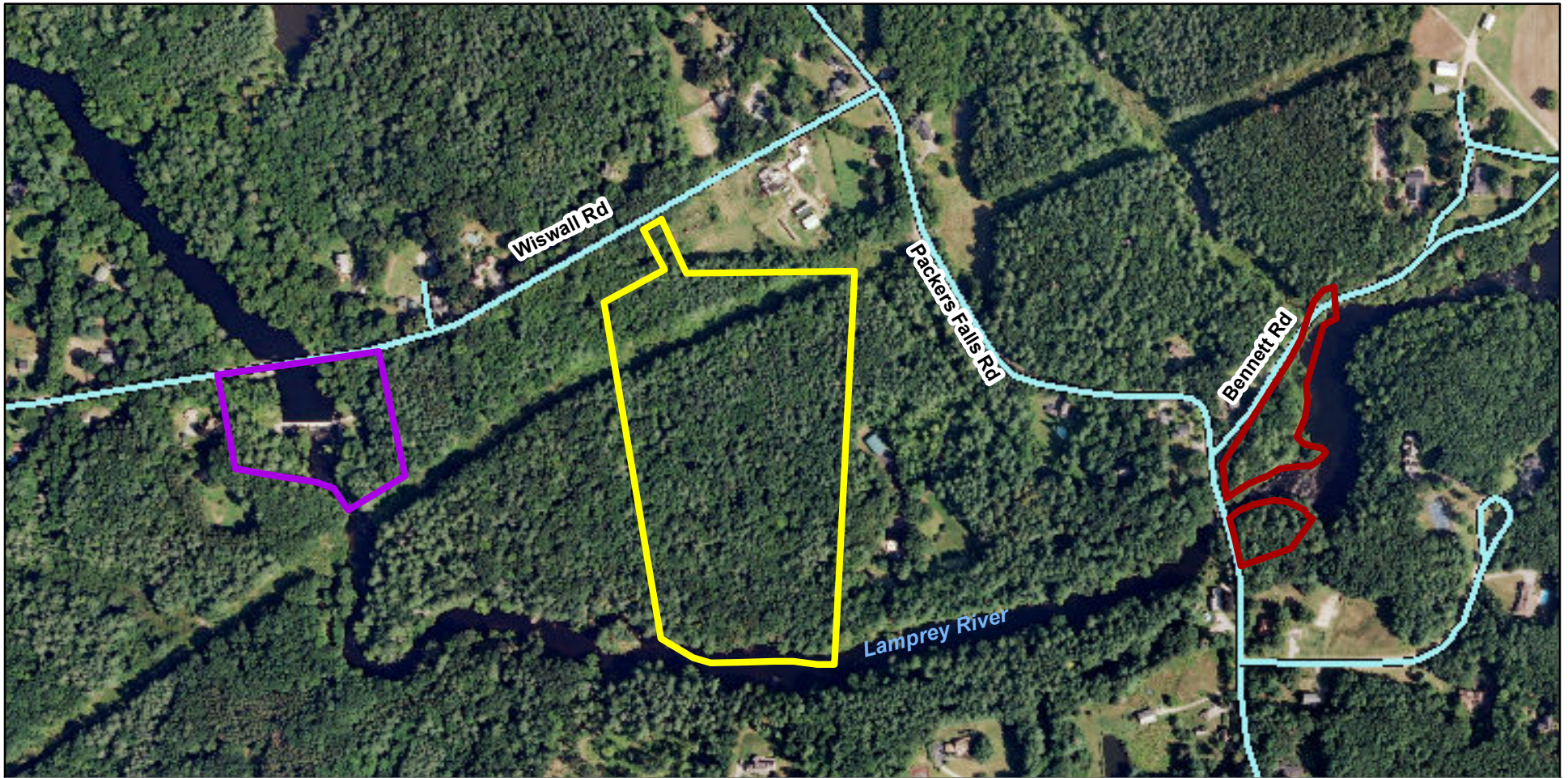






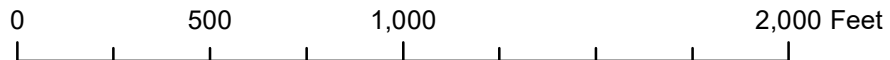
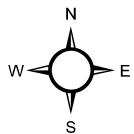
## Weeks Lot

<b>Acres/Location</b>	18 acres   17 Wiswall Road
<b>Tax Map #</b>	Map 17 Lot 11-0
<b>Directions</b>	From the Durham Town Hall follow Route 108 south approximately 1.6 miles. Turn left onto Bennett Road and follow to the end. Take a right onto Packers Falls Road 0.3 miles to a stop sign. Take a left onto Wiswall Road. The parking area for the Wiswall Dam/John Hatch Park is 0.4 miles on the left. Park here to access the Weeks Lot.
<b>Property Deeds</b>	1994: Deed BK 1721 PG 749
<b>Property Surveys</b>	Unrecorded boundary survey/sketch
<b>Easement or Deed Restriction</b>	<p>Before conveying the property to the Town of Durham, the Forest Society placed the following “Conservation Land Use Restrictions” on the property in perpetuity. The following is excerpted from the property deed:</p> <p>Purposes of Restrictions:</p> <ul style="list-style-type: none"> <li>• To maintain the property as open space for conservation</li> <li>• To protect soil productivity for forests, agriculture, and wildlife</li> <li>• To protect scenic quality</li> <li>• To protect surface and ground water</li> <li>• To preserve and protect the designated “River Front Corridor” as an undisturbed habitat and travel way for wildlife and the water quality of the Lamprey River.</li> </ul>
<b>Amenities</b>	Trail leads from the Wiswall dam along the Lamprey River; crosses private property
<b>Recreational Opportunities</b>	<ul style="list-style-type: none"> <li>• Hiking</li> <li>• Cross-country skiing and snowshoeing</li> <li>• Dog-walking (dogs on-leash/under control; pick up dog waste)</li> <li>• Fishing</li> <li>• Birdwatching/Nature observation</li> </ul>
<b>Use Restrictions</b>	<ul style="list-style-type: none"> <li>• Open dawn to dusk</li> <li>• No hunting or fireworks</li> <li>• No motorized wheeled vehicles (ATVs, trucks, dirt bikes)</li> <li>• No horseback riding</li> <li>• No campfires or camping without written permission; No camping or fires on Moat Island</li> <li>• Carry in, Carry out</li> <li>• Do not disturb plants, animals, historical or cultural features</li> </ul>



-  Wiswall Dam-John Hatch Park
-  Weeks Lot
-  Packers Falls Park
-  Roads

**Locus Map**  
**Wiswall Dam-John Hatch Park**  
**Weeks Lot, and**  
**Packers Falls Park**  
**Durham, NH**



Boundaries and features are approximate.  
 Conservation lands, roads, and background  
 (2017 1-ft high resolution) from NH GRANIT.  
 Map by Ibis Wildlife Consulting. March 2021