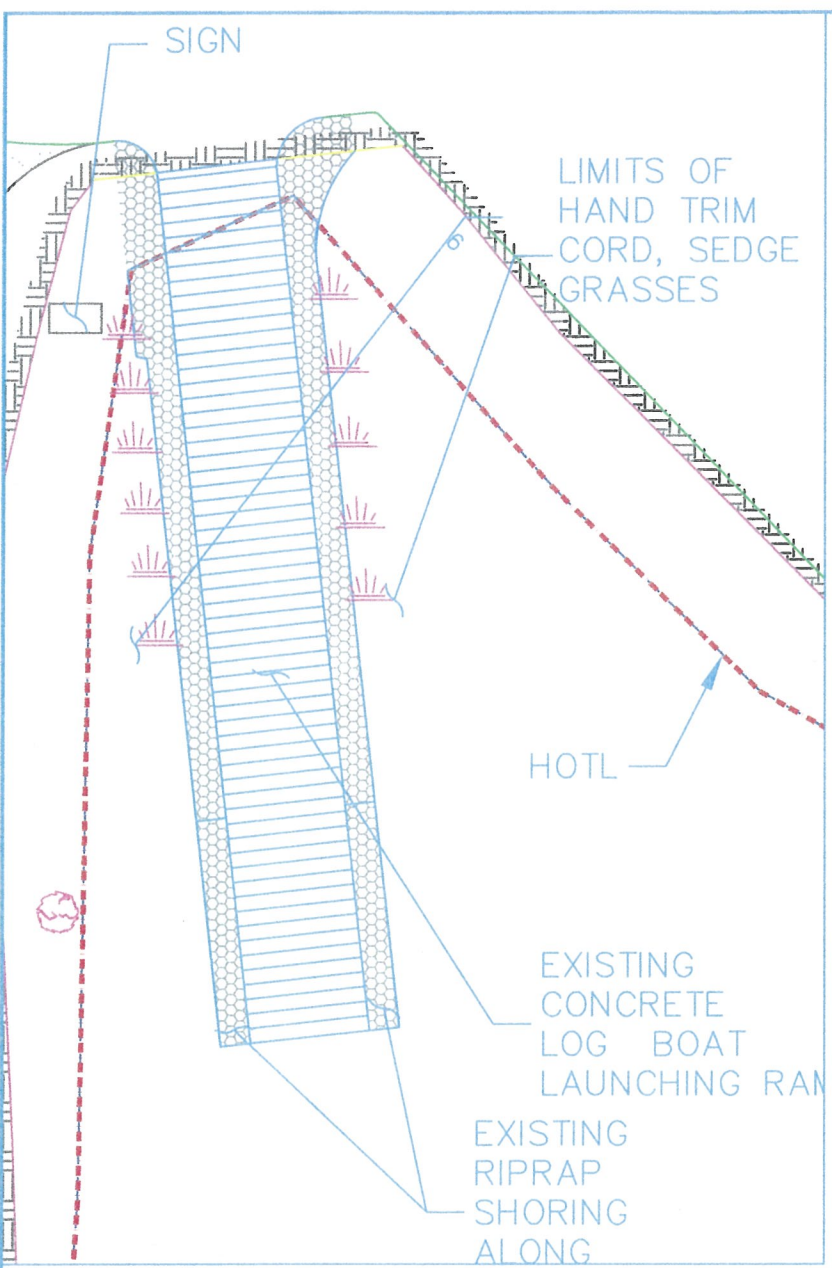


Drawing Name: P:\Engineering\Durham\Town Projects\Jackson Landing\Wetlands Permit Maintenance Plan.dwg
 Date: 19 Sep 2013 - 2:46pm

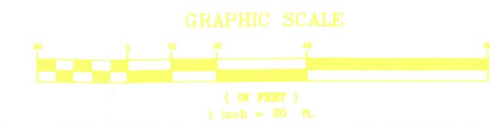
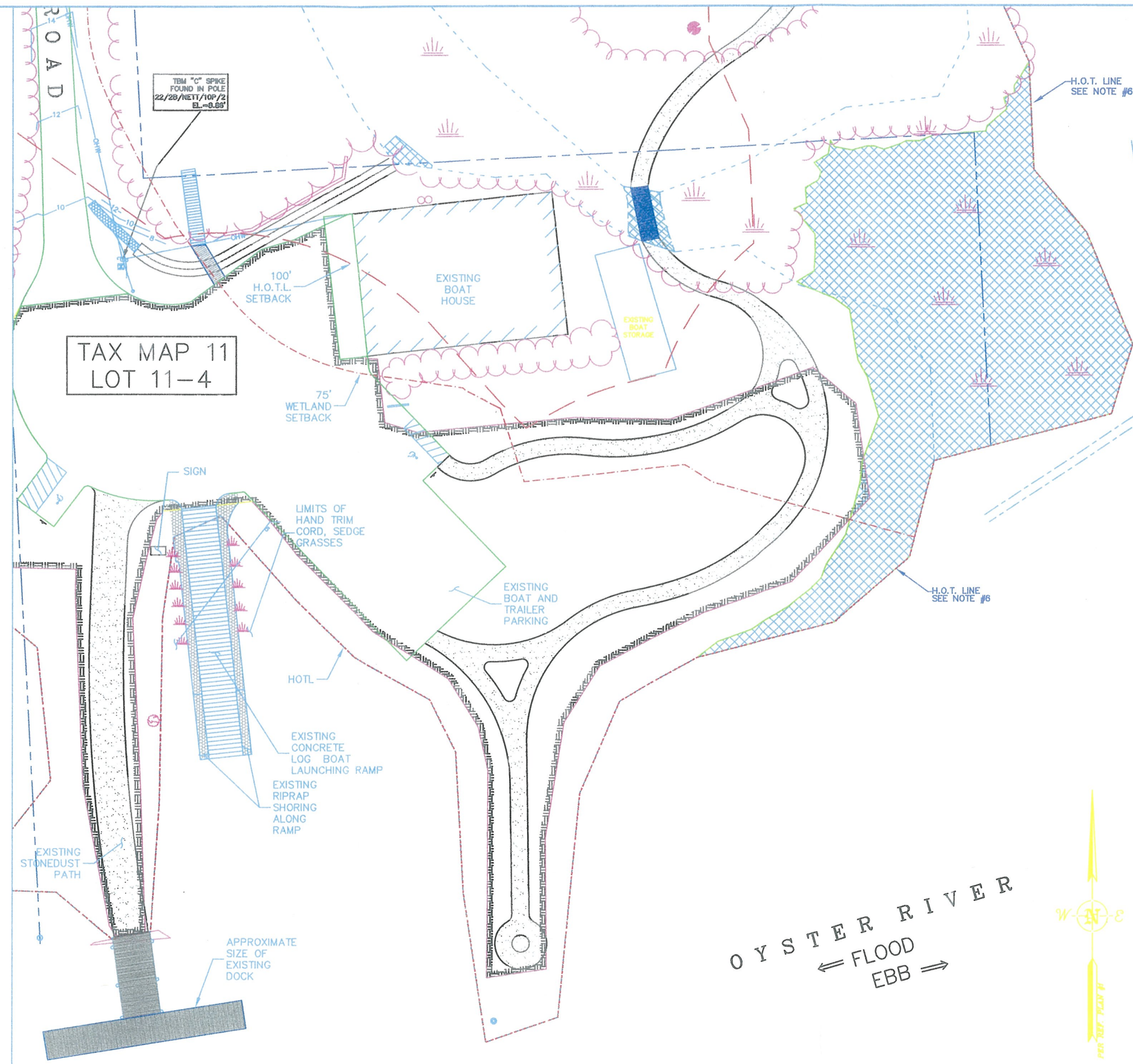


NOTES:

1. FIELD SURVEY PERFORMED BY D.P.O. & J.A.O. OF DOUGET SURVEY, INC. ON 01/09 USING A LEICA 705 TCM TOTAL STATION WITH A RANGERS TDS DATA COLLECTOR AND A SOKKA 520 AUTO LEVEL. TRAVERSE ADJUSTMENT BASED ON LEAST SQUARE ANALYSIS.
2. VERTICAL DATUM IS BASED ON NAVD 83.
3. JURISDICTIONAL WETLANDS DELINEATED BY N.H. SOILS CONSULTANTS, INC. DURING JANUARY 2009 IN ACCORDANCE WITH 1997 CORPS OF ENGINEERS WETLANDS DELINEATIONS MANUAL, TECHNICAL REPORT Y-97-1. ADDITIONAL JURISDICTIONAL WETLANDS DELINEATED BY NWSIC, INC. ON 12/12/07 AND LOCATED BY DOUGET SURVEY, INC. IN DECEMBER 2007.

MAINTENANCE PLAN NOTES:

1. ALL MAINTENANCE ITEMS TO BE COMPLETED SEASONALLY (APRIL - NOVEMBER)
2. REMOVE DEBRIS (SEAWEED, DEAD CORD GRASSES, DRIFT WOOD, FLOTATION COMPONENTS)
3. SWEEP CONCRETE LOGS
4. REPLENISH DRAINAGE STONE FROM BETWEEN CONCRETE LOGS
5. REMOVE SILT DEPOSITS FROM CONCRETE LOGS
6. REPOSITION 4 - 6 INCH SURGE STONE (RIPRAP) ALONG LAUNCHING RAMP SIDES TO CREATE SMOOTH SURFACES
7. HAND CUTBACK AND REMOVE CORD AND SEDGE GRASSES FROM SIDES OF BOAT RAMP
8. WASH OFF RAMP AS NEEDED
9. INSTALL SIGNAGE INCLUDING - END OF RAMP
 - TIDAL RIVER
 - RSA



DATE: 7/18/11		SEAL
SCALE: 1"=20'		
DESIGNED BY: MJS		WETLANDS PERMIT MAINTENANCE PLAN prepared for TOWN OF DURHAM OLD JACKSON LANDING ROAD TAX MAP 11 - LOTS 11-4 DURHAM, NH
DRAWN BY: DEB		
Modified by: Jon. C. and AT		
Town of Durham 7/18/11		
Wetlands Permit Maintenance Plan.dwg		NO.
REVISIONS		DATE
JOB: 06-081		1

MJS ENGINEERING, PC

1000 State Street, Suite 200
 Durham, NH 03824
 Phone: 603.843.1234
 Fax: 603.843.1235
 www.mjs-engineering.com