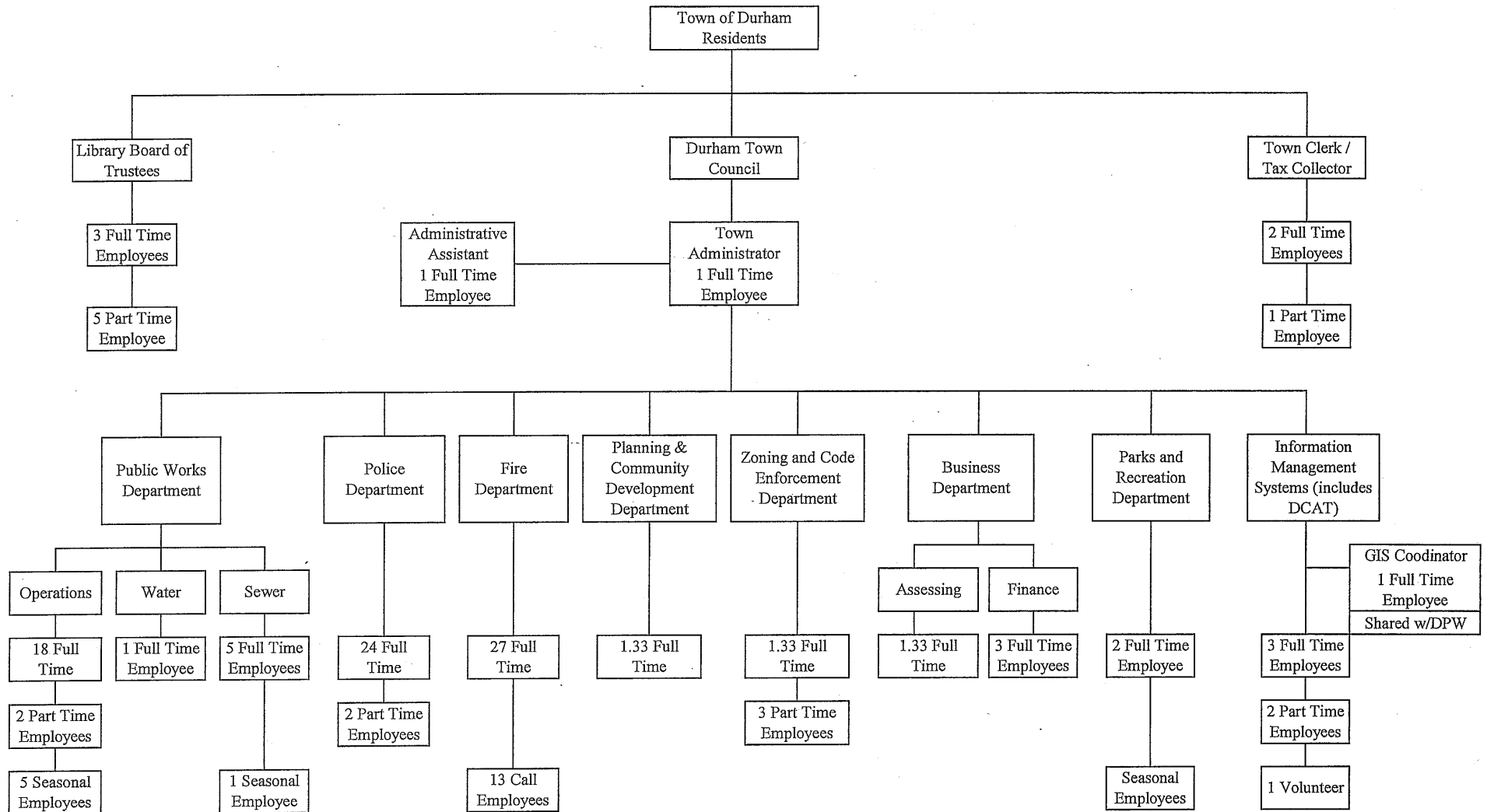


**TOWN OF DURHAM, NEW HAMPSHIRE
ORGANIZATIONAL CHART
2022**



**TOWN OF DURHAM, NH
DEPARTMENT POSITION LISTINGS**

POSITION TITLE	2012 # OF POSITIONS	2013 # OF POSITIONS	2014 # OF POSITIONS	2015 # OF POSITIONS	2016 # OF POSITIONS	2017 # OF POSITIONS	2018 # OF POSITIONS	2019 # OF POSITIONS	2020 # OF POSITIONS	2021 # OF POSITIONS	2022 PROPOSED
TOWN CLERK'S OFFICE											
TOWN CLERK/TAX COLLECTOR	1.00	1.00	1.00	1.00	1.00	1.00	1.00	1.00	1.00	1.00	1.00
DEPUTY TOWN CLERK/TAX COLLECTOR	1.00	1.00	1.00	1.00	1.00	1.00	1.00	1.00	1.00	1.00	1.00
SECRETARY (ASST. TOWN CLERK/TAX COLLECTOR)	0.60	0.60	0.60	0.60	0.60	0.60	0.60	0.60	0.60	0.60	0.60
TOWN ADMINISTRATOR'S OFFICE											
TOWN ADMINISTRATOR	1.00	1.00	1.00	1.00	1.00	1.00	1.00	1.00	1.00	1.00	1.00
ECONOMIC DEVELOPMENT DIRECTOR	0.00	0.00	0.60	0.60	0.60	0.60	0.60	0.60	0.60	0.60	0.00
ADMINISTRATIVE ASSISTANT	1.00	1.00	1.00	1.00	1.00	1.00	1.00	1.00	1.00	1.00	1.00
BUSINESS DEPARTMENT											
BUSINESS MANAGER	1.00	1.00	1.00	1.00	1.00	1.00	1.00	1.00	1.00	1.00	1.00
FINANCIAL ANALYST	1.00	1.00	1.00	1.00	1.00	1.00	1.00	1.00	1.00	1.00	1.00
ADMINISTRATIVE ASSISTANT	1.00	1.00	1.00	1.00	1.00	1.00	1.00	1.00	1.00	1.00	1.00
ASSESSOR	0.00	1.00	1.00	1.00	1.00	1.00	1.00	1.00	1.00	1.00	1.00
INFORMATION TECHNOLOGY											
COMPUTER INFO TECHNOLOGY MANAGER	1.00	1.00	1.00	1.00	1.00	1.00	1.00	1.00	1.00	1.00	1.00
IT ASSISTANT	0.00	0.00	0.00	0.00	0.00	0.00	0.00	0.00	0.00	0.00	1.00
DCAT COORDINATOR	0.50	1.00	1.00	1.00	1.00	1.00	1.00	1.00	1.00	1.00	1.00
GIS COORDINATOR	0.00	0.00	0.00	0.00	0.00	0.00	0.00	0.00	1.00	1.00	1.00
PLANNING DEPARTMENT											
PLANNING DIRECTOR	1.00	1.00	1.00	1.00	1.00	1.00	1.00	1.00	1.00	1.00	1.00
ADMINISTRATIVE ASSISTANT (shared w/Building & Assessing)	1.00	1.00	1.00	1.00	1.00	1.00	1.00	1.00	1.00	1.00	1.00
BUILDING INSPECTOR/CODE ENFORCEMENT											
BUILDING INSPECTOR/CODE ENFORCEMENT OFFICER	1.00	1.00	1.00	1.00	1.00	1.00	1.00	1.00	1.00	1.00	1.00
ASST. ZONING/CODE ENFORCEMENT OFFICER	0.00	0.00	1.00	1.00	0.00	0.00	0.00	0.00	0.00	0.00	0.00
INSPECTORS	0.00	0.40	0.40	0.40	0.40	0.40	0.75	0.75	0.75	0.75	0.75
RECREATION DEPARTMENT											
RECREATION DIRECTOR	0.75	1.00	1.00	1.00	1.00	1.00	1.00	1.00	1.00	1.00	1.00
RECREATION ASSISTANT	0.00	0.00	0.00	0.00	0.00	0.00	0.50	0.50	0.50	0.50	1.00
TOTAL TOWN OFFICE PERSONNEL	12.85	15.00	16.60	16.60	15.60	15.60	16.45	16.45	17.45	17.45	18.35
POLICE DEPARTMENT											
CHIEF OF POLICE	1.00	1.00	1.00	1.00	1.00	1.00	1.00	1.00	1.00	1.00	1.00
DEPUTY CHIEF OF POLICE	1.00	1.00	1.00	1.00	1.00	1.00	1.00	1.00	1.00	1.00	1.00
CAPTAIN	1.00	1.00	1.00	1.00	1.00	1.00	1.00	1.00	1.00	1.00	1.00
SERGEANT	5.00	5.00	5.00	5.00	5.00	5.00	5.00	5.00	5.00	5.00	5.00
PATROL	10.00	11.00	12.00	12.00	12.00	12.00	13.00	13.00	13.00	13.00	13.00
ADMINISTRATIVE ASSISTANT	2.00	2.00	2.00	2.00	2.00	2.00	2.00	2.00	2.00	2.00	2.00
PARKING ENFORCEMENT OFFICER/EVIDENCE TECHNICIAN	1.00	1.00	1.50	1.50	1.50	1.50	1.50	1.50	1.50	1.50	1.50
PARKING ENFORCEMENT SECRETARY	0.50	0.50	0.50	0.50	0.50	0.50	0.50	0.50	0.50	0.50	0.50
TOTAL POLICE DEPARTMENT PERSONNEL	21.50	22.50	24.00	24.00	24.00	24.00	25.00	25.00	25.00	25.00	25.00

**TOWN OF DURHAM, NH
DEPARTMENT POSITION LISTINGS**

POSITION TITLE	2012 # OF POSITIONS	2013 # OF POSITIONS	2014 # OF POSITIONS	2015 # OF POSITIONS	2016 # OF POSITIONS	2017 # OF POSITIONS	2018 # OF POSITIONS	2019 # OF POSITIONS	2020 # OF POSITIONS	2021 # OF POSITIONS	2022 PROPOSED
FIRE DEPARTMENT											
FIRE CHIEF	1.00	1.00	1.00	1.00	1.00	1.00	1.00	1.00	1.00	1.00	1.00
ASSISTANT FIRE CHIEF	1.00	1.00	1.00	1.00	1.00	1.00	1.00	1.00	1.00	1.00	1.00
DEPUTY FIRE CHIEF	1.00	1.00	1.00	1.00	1.00	1.00	1.00	1.00	0.00	0.00	0.00
FIRE MARSHAL	0.00	0.00	0.00	0.00	0.00	0.00	0.00	0.00	1.00	1.00	1.00
DEPUTY FIRE MARSHAL	0.00	0.00	0.00	0.00	0.00	0.00	0.00	0.00	0.00	0.00	1.00
ADMINISTRATIVE ASSISTANT	1.00	1.80	1.80	1.80	1.80	1.80	1.80	1.80	1.80	2.00	2.00
CAPTAIN	4.00	4.00	4.00	4.00	4.00	4.00	4.00	4.00	4.00	4.00	4.00
FIREFIGHTER	16.00	16.00	16.00	16.00	16.00	16.00	16.00	16.00	16.00	16.00	16.00
FIRE INSPECTOR	1.00	2.00	2.00	2.00	2.00	2.00	2.00	2.00	2.00	2.00	1.00
TOTAL FIRE DEPARTMENT PERSONNEL	25.00	26.80	26.80	26.80	26.80	26.80	26.80	26.80	26.80	27.00	27.00
PUBLIC WORKS DEPARTMENT											
PUBLIC WORKS DIRECTOR	1.00	1.00	1.00	1.00	1.00	1.00	1.00	1.00	1.00	1.00	1.00
ENGINEER	2.00	2.00	2.00	2.00	1.00	1.00	1.00	1.00	1.00	2.00	2.00
ASST. TO THE PW DIRECTOR	1.00	1.00	1.00	1.00	1.00	1.00	1.00	1.00	1.00	1.00	1.00
OFFICE ASSISTANT	0.00	0.00	0.50	0.50	0.50	0.50	1.00	1.00	1.00	1.00	1.00
ASST. DIRECTOR FOR OPERATIONS	1.00	1.00	1.00	1.00	1.00	1.00	1.00	1.00	1.00	1.00	1.00
OPERATIONS MANAGER (formerly Highway Foreman)	1.00	1.00	1.00	1.00	1.00	1.00	1.00	1.00	1.00	1.00	1.00
HIGHWAY MAINTENANCE WORKER IV	1.00	1.00	1.00	1.00	1.00	1.00	1.00	2.00	2.00	3.00	3.00
HIGHWAY MAINTENANCE WORKER III	1.00	1.00	1.00	1.00	1.00	1.00	1.00	1.00	1.00	0.00	0.00
TRADESMAN (mechanic)	1.00	1.00	1.00	1.00	1.00	1.00	1.00	1.00	1.00	1.00	1.00
ASST. TRADESMAN (asst. mechanic)	0.40	0.40	0.40	0.40	0.40	0.40	0.40	0.40	0.40	0.40	0.40
BUILDINGS & GROUNDS FOREMAN	1.00	1.00	1.00	1.00	1.00	1.00	1.00	1.00	1.00	1.00	1.00
BUILDINGS & GROUNDS MAINTENANCE WORKER III	1.00	1.00	1.00	1.00	1.00	1.00	1.00	1.00	1.00	1.00	1.00
TRAFFIC CONTROL MAINTENANCE WORKER IV	1.00	1.00	1.00	1.00	1.00	1.00	1.00	1.00	1.00	1.00	1.00
SANITATION MAINTENANCE WORKER IV	3.00	3.00	3.00	3.00	3.00	3.00	3.00	4.00	4.00	4.00	4.00
SANITATION MAINTENANCE WORKER III	1.00	1.00	1.00	1.00	1.00	1.00	1.00	0.00	0.00	0.00	0.00
SANITATION MAINTENANCE WORKER	0.50	0.50	0.50	0.50	0.50	0.50	0.50	0.50	0.50	0.50	0.50
WATER DIVISION											
WATER MAINTENANCE WORKER V	0.00	0.00	0.00	0.00	0.00	0.00	0.00	0.00	1.00	1.00	1.00
WATER TRADESMAN	1.00	1.00	1.00	1.00	1.00	1.00	1.00	1.00	0.00	0.00	0.00
WASTEWATER DIVISION											
SUPT. OF WASTEWATER	1.00	1.00	1.00	1.00	1.00	1.00	1.00	1.00	1.00	1.00	1.00
WASTEWATER LAB TECHNICIAN	1.00	1.00	1.00	1.00	1.00	1.00	1.00	1.00	1.00	1.00	1.00
WASTEWATER MAINTENANCE WORKER V	1.00	1.00	1.00	1.00	1.00	1.00	1.00	1.00	1.00	1.00	1.00
WASTEWATER MAINTENANCE WORKER IV	1.00	1.00	1.00	1.00	0.00	0.00	0.00	0.00	0.00	0.00	0.00
WASTEWATER TRADESMAN	1.00	1.00	1.00	1.00	2.00	2.00	2.00	2.00	2.00	2.00	2.00
TOTAL PUBLIC WORKS DEPARTMENT PERSONNEL	22.90	22.90	23.40	23.40	22.40	22.40	22.90	23.90	23.90	24.90	24.90
LIBRARY											
DIRECTOR	1.00	1.00	1.00	1.00	1.00	1.00	1.00	1.00	1.00	1.00	1.00
ASSISTANT DIRECTOR	0.63	0.83	1.00	1.00	1.00	1.00	1.00	1.00	1.00	1.00	1.00
CHILDREN'S AND YOUNG ADULT LIBRARIAN	0.63	0.83	1.00	1.00	1.00	1.00	1.00	1.00	1.00	1.00	1.00
LIBRARY ASSISTANTS	1.48	2.25	2.25	2.55	2.55	2.85	2.85	2.85	2.85	2.85	2.85
TOTAL LIBRARY PERSONNEL	3.73	4.90	5.25	5.55	5.55	5.85	5.85	5.85	5.85	5.85	5.85

**TOWN OF DURHAM, NH
DEPARTMENT POSITION LISTINGS**

POSITION TITLE	2012 # OF POSITIONS	2013 # OF POSITIONS	2014 # OF POSITIONS	2015 # OF POSITIONS	2016 # OF POSITIONS	2017 # OF POSITIONS	2018 # OF POSITIONS	2019 # OF POSITIONS	2020 # OF POSITIONS	2021 # OF POSITIONS	2022 PROPOSED
CHURCHILL RINK											
RINK MANAGER	0.00	0.00	0.00	0.00	0.00	0.00	0.00	0.00	1.00	1.00	1.00
TOTAL CHURCHILL RINK PERSONNEL	0.00	0.00	0.00	0.00	0.00	0.00	0.00	0.00	1.00	1.00	1.00
TOTAL NUMBER OF PERSONNEL	85.98	92.10	96.05	96.35	94.35	94.65	97.00	98.00	100.00	101.20	102.10
	(1.75)	6.12	3.95	0.30	(2.00)	0.30	2.35	1.00	2.00	1.20	0.90
	Recreation +0.25	Recreation +0.25	Bldg Insp +1.0	Library +0.30	Bldg Insp (-1.0)	Library +0.30	Bldg Insp +0.35	DPW +1.0	GIS +1.0	Fire +0.20	Econ Dvlp -0.60
	Police (-1.00)	Police +1.00	Police +1.50		Engineer (-1.0)		Recreation +0.5		Rink +1.0	Engineer +1.0	IT +1.0
		Fire +1.80	DPW +0.50				DPW +0.5				Recreation +0.5
		DCAT +0.50	Econ Dvl +0.60				Police +1.0				
		Assessor +1.0	Library +0.35								
		Bldg Insp +0.40									
		Library +1.17									

IN ADDITION THE TOWN OF DURHAM HAS THE FOLLOWING SEASONAL/TEMPORARY/WORK STUDY POSITIONS:

PLANNING DEPARTMENT - Work Study Office Assistant when available
 POLICE DEPARTMENT - Work Study Office Assistant when available
 FIRE DEPARTMENT - Work Study Office Assistant when available
 FIRE DEPARTMENT - 13 Call Firefighters
 PUBLIC WORKS DEPARTMENT - 2-5 Seasonal Laborers
 RECREATION DEPARTMENT - Seasonal Camp Counselors and UNH Interns when available
 CHURCHILL RINK - Seasonal Employees
 LIBRARY - Work Study Students and Substitute Librarians