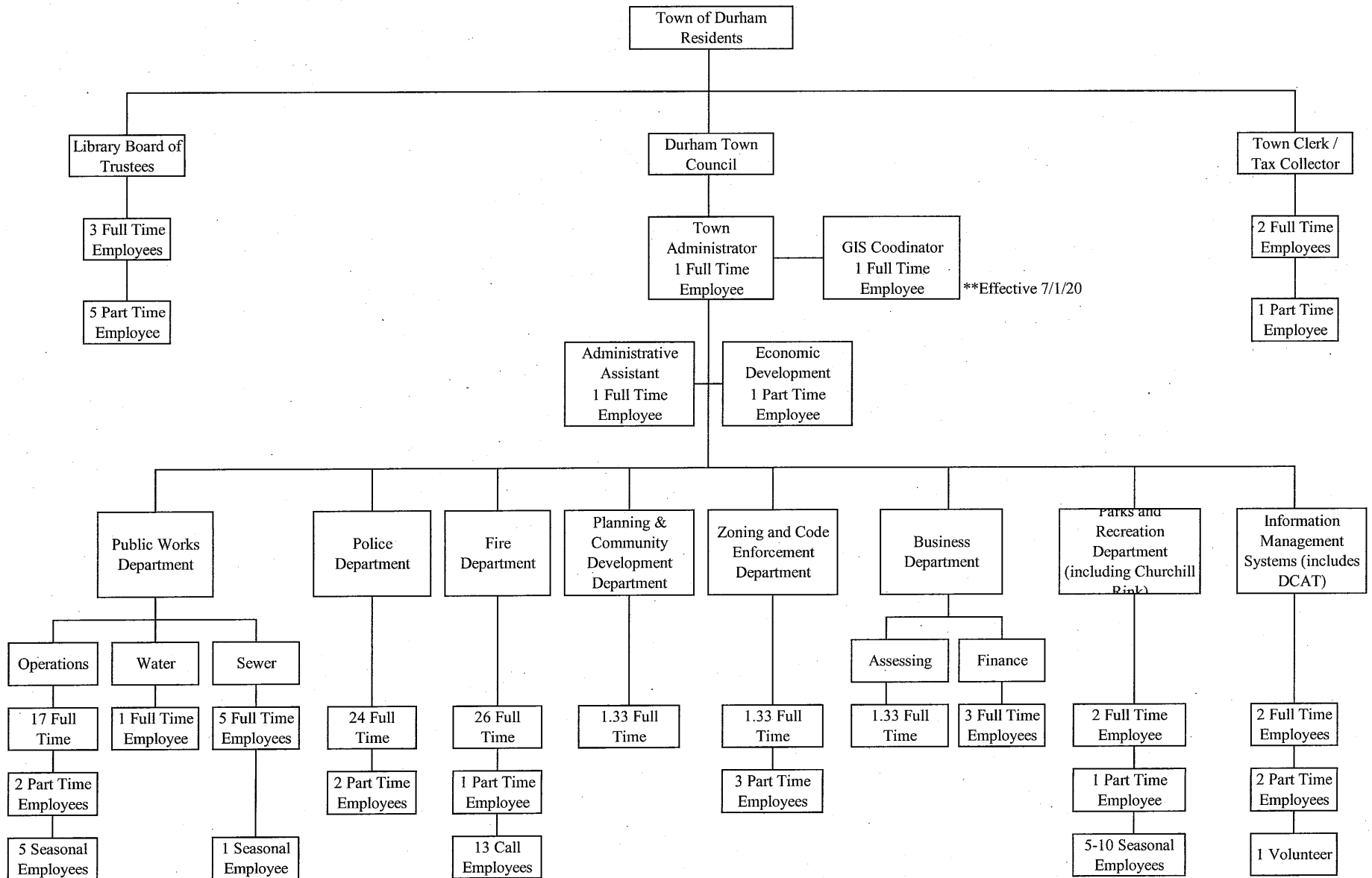


**TOWN OF DURHAM, NEW HAMPSHIRE  
ORGANIZATIONAL CHART  
2020**



**TOWN OF DURHAM, NH**  
**DEPARTMENT POSITION LISTINGS**

<i>POSITION TITLE</i>	<i>2011 # OF POSITIONS</i>	<i>2012 # OF POSITIONS</i>	<i>2013 # OF POSITIONS</i>	<i>2014 # OF POSITIONS</i>	<i>2015 # OF POSITIONS</i>	<i>2016 # OF POSITIONS</i>	<i>2017 # OF POSITIONS</i>	<i>2018 # OF POSITIONS</i>	<i>2019 # OF POSITIONS</i>	<i>2020 # OF POSITIONS</i>
<b>TOWN CLERK'S OFFICE</b>										
TOWN CLERK/TAX COLLECTOR	1.00	1.00	1.00	1.00	1.00	1.00	1.00	1.00	1.00	1.00
DEPUTY TOWN CLERK/TAX COLLECTOR	1.00	1.00	1.00	1.00	1.00	1.00	1.00	1.00	1.00	1.00
SECRETARY (ASST. TOWN CLERK/TAX COLLECTOR)	0.60	0.60	0.60	0.60	0.60	0.60	0.60	0.60	0.60	0.60
<b>TOWN ADMINISTRATOR'S OFFICE</b>										
TOWN ADMINISTRATOR	1.00	1.00	1.00	1.00	1.00	1.00	1.00	1.00	1.00	1.00
ECONOMIC DEVELOPMENT DIRECTOR	0.00	0.00	0.00	0.60	0.60	0.60	0.60	0.60	0.60	0.60
GIS COORDINATOR	0.00	0.00	0.00	0.00	0.00	0.00	0.00	0.00	0.00	1.00
ADMINISTRATIVE ASSISTANT	1.00	1.00	1.00	1.00	1.00	1.00	1.00	1.00	1.00	1.00
<b>BUSINESS DEPARTMENT</b>										
BUSINESS MANAGER	1.00	1.00	1.00	1.00	1.00	1.00	1.00	1.00	1.00	1.00
FINANCIAL ANALYST	1.00	1.00	1.00	1.00	1.00	1.00	1.00	1.00	1.00	1.00
ADMINISTRATIVE ASSISTANT	1.00	1.00	1.00	1.00	1.00	1.00	1.00	1.00	1.00	1.00
ASSESSOR	0.00	0.00	1.00	1.00	1.00	1.00	1.00	1.00	1.00	1.00
<b>INFORMATION TECHNOLOGY</b>										
COMPUTER INFO TECHNOLOGY MANAGER	1.00	1.00	1.00	1.00	1.00	1.00	1.00	1.00	1.00	1.00
DCAT COORDINATOR	0.50	0.50	1.00	1.00	1.00	1.00	1.00	1.00	1.00	1.00
<b>PLANNING DEPARTMENT</b>										
PLANNING DIRECTOR	1.00	1.00	1.00	1.00	1.00	1.00	1.00	1.00	1.00	1.00
ADMINISTRATIVE ASSISTANT (shared w/Building & Assessing)	1.00	1.00	1.00	1.00	1.00	1.00	1.00	1.00	1.00	1.00
<b>BUILDING INSPECTOR/CODE ENFORCEMENT</b>										
BUILDING INSPECTOR/CODE ENFORCEMENT OFFICER	1.00	1.00	1.00	1.00	1.00	1.00	1.00	1.00	1.00	1.00
ASST. ZONING/CODE ENFORCEMENT OFFICER	0.00	0.00	0.00	1.00	1.00	0.00	0.00	0.00	0.00	0.00
INSPECTORS	0.00	0.00	0.40	0.40	0.40	0.40	0.40	0.75	0.75	0.75
<b>RECREATION DEPARTMENT</b>										
RECREATION DIRECTOR	0.50	0.75	1.00	1.00	1.00	1.00	1.00	1.00	1.00	1.00
RECREATION ASSISTANT	0.00	0.00	0.00	0.00	0.00	0.00	0.00	0.50	0.50	0.50
<b>TOTAL TOWN OFFICE PERSONNEL</b>	<b>12.60</b>	<b>12.85</b>	<b>15.00</b>	<b>16.60</b>	<b>16.60</b>	<b>15.60</b>	<b>15.60</b>	<b>16.45</b>	<b>16.45</b>	<b>17.45</b>
<b>POLICE DEPARTMENT</b>										
CHIEF OF POLICE	1.00	1.00	1.00	1.00	1.00	1.00	1.00	1.00	1.00	1.00
DEPUTY CHIEF OF POLICE	1.00	1.00	1.00	1.00	1.00	1.00	1.00	1.00	1.00	1.00
LIEUTENANT	0.00	0.00	0.00	0.00	0.00	0.00	0.00	0.00	0.00	0.00
CAPTAIN	1.00	1.00	1.00	1.00	1.00	1.00	1.00	1.00	1.00	1.00
SERGEANT	5.00	5.00	5.00	5.00	5.00	5.00	5.00	5.00	5.00	5.00
PATROL	11.00	10.00	11.00	12.00	12.00	12.00	12.00	13.00	13.00	13.00
ADMINISTRATIVE ASSISTANT	2.00	2.00	2.00	2.00	2.00	2.00	2.00	2.00	2.00	2.00
PARKING ENFORCEMENT OFFICER/EVIDENCE TECHNICIAN	1.00	1.00	1.00	1.50	1.50	1.50	1.50	1.50	1.50	1.50
PARKING ENFORCEMENT SECRETARY	0.50	0.50	0.50	0.50	0.50	0.50	0.50	0.50	0.50	0.50
<b>TOTAL POLICE DEPARTMENT PERSONNEL</b>	<b>22.50</b>	<b>21.50</b>	<b>22.50</b>	<b>24.00</b>	<b>24.00</b>	<b>24.00</b>	<b>24.00</b>	<b>25.00</b>	<b>25.00</b>	<b>25.00</b>

**TOWN OF DURHAM, NH  
DEPARTMENT POSITION LISTINGS**

POSITION TITLE	2011 # OF POSITIONS	2012 # OF POSITIONS	2013 # OF POSITIONS	2014 # OF POSITIONS	2015 # OF POSITIONS	2016 # OF POSITIONS	2017 # OF POSITIONS	2018 # OF POSITIONS	2019 # OF POSITIONS	2020 # OF POSITIONS
<b>FIRE DEPARTMENT</b>										
FIRE CHIEF	1.00	1.00	1.00	1.00	1.00	1.00	1.00	1.00	1.00	1.00
ASSISTANT FIRE CHIEF	1.00	1.00	1.00	1.00	1.00	1.00	1.00	1.00	1.00	1.00
DEPUTY FIRE CHIEF	1.00	1.00	1.00	1.00	1.00	1.00	1.00	1.00	1.00	1.00
DIVISION CHIEF OF OPERATIONS	0.00	0.00	0.00	0.00	0.00	0.00	0.00	0.00	0.00	0.00
DIVISION CHIEF OF PREVENTION AND SAFETY	0.00	0.00	0.00	0.00	0.00	0.00	0.00	0.00	0.00	0.00
ADMINISTRATIVE ASSISTANT	1.00	1.00	1.80	1.80	1.80	1.80	1.80	1.80	1.80	1.80
CAPTAIN	4.00	4.00	4.00	4.00	4.00	4.00	4.00	4.00	4.00	4.00
FIREFIGHTER	16.00	16.00	16.00	16.00	16.00	16.00	16.00	16.00	16.00	16.00
FIRE INSPECTOR	1.00	1.00	2.00	2.00	2.00	2.00	2.00	2.00	2.00	2.00
<b>TOTAL FIRE DEPARTMENT PERSONNEL</b>	<b>25.00</b>	<b>25.00</b>	<b>26.80</b>	<b>26.80</b>	<b>26.80</b>	<b>26.80</b>	<b>26.80</b>	<b>26.80</b>	<b>26.80</b>	<b>26.80</b>
<b>PUBLIC WORKS DEPARTMENT</b>										
PUBLIC WORKS DIRECTOR	1.00	1.00	1.00	1.00	1.00	1.00	1.00	1.00	1.00	1.00
ENGINEER	2.00	2.00	2.00	2.00	2.00	1.00	1.00	1.00	1.00	1.00
ASST. TO THE PW DIRECTOR	1.00	1.00	1.00	1.00	1.00	1.00	1.00	1.00	1.00	1.00
OFFICE ASSISTANT	0.00	0.00	0.00	0.50	0.50	0.50	0.50	1.00	1.00	1.00
ASST. DIRECTOR OF OPERATIONS	1.00	1.00	1.00	1.00	1.00	1.00	1.00	1.00	1.00	1.00
HIGHWAY FOREMAN	1.00	1.00	1.00	1.00	1.00	1.00	1.00	1.00	1.00	1.00
HIGHWAY TRADESMAN	0.00	0.00	0.00	0.00	0.00	0.00	0.00	1.00	0.00	0.00
HIGHWAY MAINTENANCE WORKER IV	1.00	1.00	1.00	1.00	1.00	1.00	1.00	0.00	2.00	2.00
HIGHWAY MAINTENANCE WORKER III	1.00	1.00	1.00	1.00	1.00	1.00	1.00	1.00	1.00	1.00
TRADESMAN (mechanic)	1.00	1.00	1.00	1.00	1.00	1.00	1.00	1.00	1.00	1.00
ASST. TRADESMAN (asst. mechanic)	0.40	0.40	0.40	0.40	0.40	0.40	0.40	0.40	0.40	0.40
BUILDINGS & GROUNDS FOREMAN	1.00	1.00	1.00	1.00	1.00	1.00	1.00	1.00	1.00	1.00
BUILDINGS & GROUNDS MAINTENANCE WORKER III	1.00	1.00	1.00	1.00	1.00	1.00	1.00	1.00	1.00	1.00
TRAFFIC CONTROL MAINTENANCE WORKER IV	1.00	1.00	1.00	1.00	1.00	1.00	1.00	1.00	1.00	1.00
SANITATION MAINTENANCE WORKER IV	3.00	3.00	3.00	3.00	3.00	3.00	3.00	3.00	3.00	3.00
SANITATION MAINTENANCE WORKER III	1.00	1.00	1.00	1.00	1.00	1.00	1.00	1.00	1.00	1.00
SANITATION MAINTENANCE WORKER	0.50	0.50	0.50	0.50	0.50	0.50	0.50	0.50	0.50	0.50
<b>WATER DIVISION</b>										
WATER TRADESMAN	1.00	1.00	1.00	1.00	1.00	1.00	1.00	1.00	1.00	1.00
WATER MAINTENANCE WORKER IV	0.00	0.00	0.00	0.00	0.00	0.00	0.00	0.00	0.00	0.00
<b>WASTEWATER DIVISION</b>										
SUPT. OF WASTEWATER	1.00	1.00	1.00	1.00	1.00	1.00	1.00	1.00	1.00	1.00
WASTEWATER LAB TECHNICIAN	1.00	1.00	1.00	1.00	1.00	1.00	1.00	1.00	1.00	1.00
WASTEWATER MAINTENANCE WORKER V	1.00	1.00	1.00	1.00	1.00	1.00	1.00	1.00	1.00	1.00
WASTEWATER MAINTENANCE WORKER IV	1.00	1.00	1.00	1.00	1.00	0.00	0.00	0.00	0.00	0.00
WASTEWATER TRADESMAN	1.00	1.00	1.00	1.00	1.00	2.00	2.00	2.00	2.00	2.00
<b>TOTAL PUBLIC WORKS DEPARTMENT PERSONNEL</b>	<b>22.90</b>	<b>22.90</b>	<b>22.90</b>	<b>23.40</b>	<b>23.40</b>	<b>22.40</b>	<b>22.40</b>	<b>22.90</b>	<b>23.90</b>	<b>23.90</b>
<b>LIBRARY</b>										
DIRECTOR	1.00	1.00	1.00	1.00	1.00	1.00	1.00	1.00	1.00	1.00
ASSISTANT DIRECTOR	0.63	0.63	0.83	1.00	1.00	1.00	1.00	1.00	1.00	1.00
CHILDREN'S AND YOUNG ADULT LIBRARIAN	0.63	0.63	0.83	1.00	1.00	1.00	1.00	1.00	1.00	1.00
LIBRARY ASSISTANTS	1.48	1.48	2.25	2.25	2.55	2.55	2.85	2.85	2.85	2.85
<b>TOTAL LIBRARY PERSONNEL</b>	<b>3.73</b>	<b>3.73</b>	<b>4.90</b>	<b>5.25</b>	<b>5.55</b>	<b>5.55</b>	<b>5.85</b>	<b>5.85</b>	<b>5.85</b>	<b>5.85</b>

**TOWN OF DURHAM, NH  
DEPARTMENT POSITION LISTINGS**

POSITION TITLE	2011 # OF POSITIONS	2012 # OF POSITIONS	2013 # OF POSITIONS	2014 # OF POSITIONS	2015 # OF POSITIONS	2016 # OF POSITIONS	2017 # OF POSITIONS	2018 # OF POSITIONS	2019 # OF POSITIONS	2020 # OF POSITIONS
<b>CHURCHILL RINK</b>										
RINK MANAGER	0.00	0.00	0.00	0.00	0.00	0.00	0.00	0.00	0.00	1.00
<b>TOTAL CHURCHILL RINK PERSONNEL</b>	<b>0.00</b>	<b>0.00</b>	<b>0.00</b>	<b>0.00</b>	<b>0.00</b>	<b>0.00</b>	<b>0.00</b>	<b>0.00</b>	<b>0.00</b>	<b>1.00</b>
<b>TOTAL NUMBER OF PERSONNEL</b>	<b>86.73</b>	<b>85.98</b>	<b>92.10</b>	<b>96.05</b>	<b>96.35</b>	<b>94.35</b>	<b>94.65</b>	<b>97.00</b>	<b>98.00</b>	<b>100.00</b>
	0.00	(0.75)	6.12	3.95	0.30	(2.00)	0.30	2.35	1.00	2.00
		Recreation +0.25 Police (-1.00)	Recreation +0.25 Police +1.00 Fire +1.80 DCAT +0.50 Assessor +1.0 Bldg Insp +0.40 Library +1.17	Bldg Insp +1.0 Police +1.50 DPW +0.50 Econ Dvl +0.60 Library +0.35	Library +0.30	Bldg Insp (-1.0) Engineer (-1.0)	Library +0.30	Bldg Insp +0.35 Recreation +0.5 DPW +0.5 Police +1.0	DPW +1.0	GIS +1.0 Rink +1.0

IN ADDITION THE TOWN OF DURHAM HAS THE FOLLOWING SEASONAL/TEMPORARY/WORK STUDY POSITIONS:

PLANNING DEPARTMENT - Work Study Office Assistant when available  
 POLICE DEPARTMENT - Work Study Office Assistant when available  
 FIRE DEPARTMENT - Work Study Office Assistant when available  
 FIRE DEPARTMENT - 13 Call Firefighters  
 PUBLIC WORKS DEPARTMENT - 2-5 Seasonal Laborers  
 RECREATION DEPARTMENT - Seasonal Camp Counselors and UNH Interns when available  
 CHURCHILL RINK - Seasonal Employees  
 LIBRARY - Work Study Students and Substitute Librarians