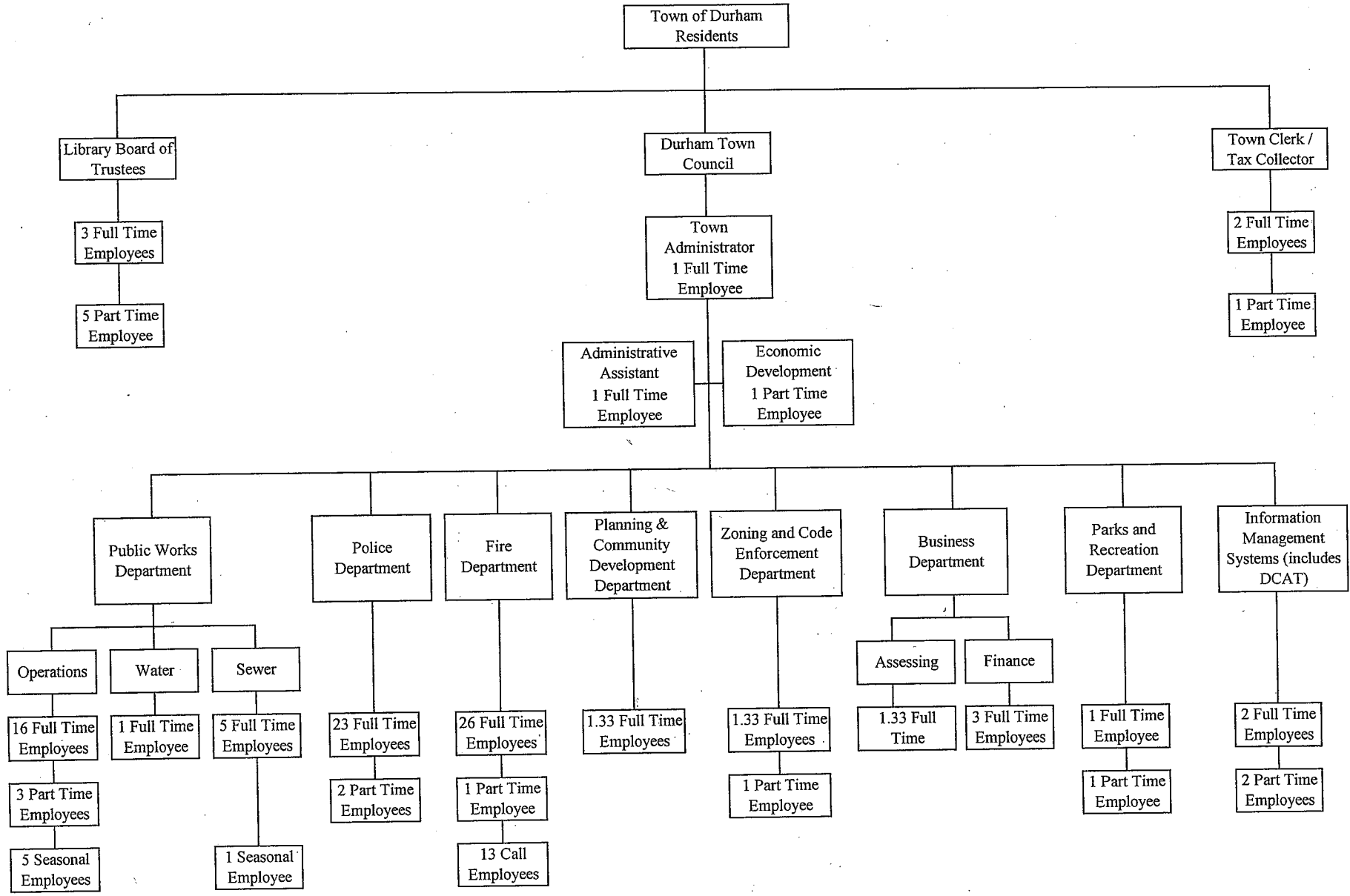


**TOWN OF DURHAM, NEW HAMPSHIRE
ORGANIZATIONAL CHART
2016**



TOWN OF DURHAM, NH 2005-2016 POSITION LISTING

POSITION TITLE	2005 # OF POSITIONS	2006 # OF POSITIONS	2007 # OF POSITIONS	2008 # OF POSITIONS	2009 # OF POSITIONS	2010 # OF POSITIONS	2011 # OF POSITIONS	2012 # OF POSITIONS	2013 # OF POSITIONS	2014 # OF POSITIONS	2015 # OF POSITIONS	2016 # OF POSITIONS
TOWN CLERK'S OFFICE												
TOWN CLERK/TAX COLLECTOR	1.00	1.00	1.00	1.00	1.00	1.00	1.00	1.00	1.00	1.00	1.00	1.00
DEPUTY TOWN CLERK/TAX COLLECTOR	1.00	1.00	1.00	1.00	1.00	1.00	1.00	1.00	1.00	1.00	1.00	1.00
SECRETARY (ASST. TOWN CLERK/TAX COLLECTOR)	0.60	0.60	0.60	0.60	0.60	0.60	0.60	0.60	0.60	0.60	0.60	0.60
TOWN ADMINISTRATOR'S OFFICE												
TOWN ADMINISTRATOR	1.00	1.00	1.00	1.00	1.00	1.00	1.00	1.00	1.00	1.00	1.00	1.00
ADMINISTRATIVE ASSISTANT	1.00	1.00	1.00	1.00	1.00	1.00	1.00	1.00	1.00	1.00	1.00	1.00
SECRETARY/MINUTE TAKER	0.00	0.00	0.00	0.00	0.00	0.00	0.00	0.00	0.00	0.00	0.00	0.00
BUSINESS DEPARTMENT												
BUSINESS MANAGER	1.00	1.00	1.00	1.00	1.00	1.00	1.00	1.00	1.00	1.00	1.00	1.00
STAFF ACCOUNTANT (FINANCIAL ANALYST)	1.00	1.00	1.00	1.00	1.00	1.00	1.00	1.00	1.00	1.00	1.00	1.00
ADMINISTRATIVE ASSISTANT (ACCOUNTING ASSISTANT)	1.00	1.00	1.00	1.00	1.00	1.00	1.00	1.00	1.00	1.00	1.00	1.00
ASSESSOR	1.00	1.00	1.00	1.00	1.00	0.00	0.00	0.00	1.00	1.00	1.00	1.00
INFORMATION TECHNOLOGY												
COMPUTER INFO TECHNOLOGY MANAGER	0.25	1.00	1.00	1.00	1.00	1.00	1.00	1.00	1.00	1.00	1.00	1.00
DCAT COORDINATOR	0.50	0.50	0.50	0.50	0.50	0.50	0.50	0.50	1.00	1.00	1.00	1.00
PLANNING DEPARTMENT												
PLANNING DIRECTOR	1.00	1.00	1.00	1.00	1.00	1.00	1.00	1.00	1.00	1.00	1.00	1.00
COMMUNITY DEVELOPMENT												
ECONOMIC DEVELOPMENT DIRECTOR	0.00	0.00	0.00	0.00	0.00	0.00	0.50	0.00	0.00	0.60	0.60	0.60
ADMINISTRATIVE ASSISTANT (SECRETARY)	1.00	1.00	1.00	1.00	1.00	1.00	1.00	1.00	1.00	1.00	1.00	1.00
BUILDING INSPECTOR/CODE ENFORCEMENT												
BUILDING INSPECTOR/CODE ENFORCEMENT OFFICER	1.00	1.00	1.00	1.00	1.00	1.00	1.00	1.00	1.40	2.40	2.40	1.40
RECREATION DEPARTMENT												
RECREATION DIRECTOR	0.00	0.00	0.00	0.00	0.00	0.50	0.50	0.75	1.00	1.40	1.40	1.40
TOTAL TOWN OFFICE PERSONNEL	12.35	13.10	13.10	13.10	13.10	12.60	13.10	12.85	15.00	17.00	17.00	16.00
POLICE DEPARTMENT												
CHIEF OF POLICE	1.00	1.00	1.00	1.00	1.00	1.00	1.00	1.00	1.00	1.00	1.00	1.00
DEPUTY CHIEF OF POLICE	1.00	1.00	1.00	1.00	1.00	1.00	1.00	1.00	1.00	1.00	1.00	1.00
LIEUTENANT	1.00	1.00	1.00	1.00	1.00	1.00	0.00	0.00	0.00	0.00	0.00	0.00
CAPTAIN	0.00	0.00	0.00	0.00	0.00	0.00	1.00	1.00	1.00	1.00	1.00	1.00
SERGEANT	5.00	5.00	5.00	5.00	5.00	5.00	5.00	5.00	5.00	5.00	5.00	5.00
PATROL	11.00	11.00	11.00	11.00	10.00	11.00	11.00	10.00	11.00	12.00	12.00	12.00
ADMINISTRATIVE ASSISTANT	2.00	2.00	2.00	2.00	2.00	2.00	2.00	2.00	2.00	2.00	2.00	2.00
PARKING ENFORCEMENT OFFICER/EVIDENCE TECHNICIAN	1.00	1.00	1.00	1.00	1.00	1.00	1.00	1.00	1.00	1.50	1.50	1.50
PARKING ENFORCEMENT SECRETARY	0.50	0.50	0.50	0.50	0.50	0.50	0.50	0.50	0.50	0.50	0.50	0.50
TOTAL POLICE DEPARTMENT PERSONNEL	22.50	22.50	22.50	22.50	21.50	22.50	22.50	21.50	22.50	24.00	24.00	24.00

TOWN OF DURHAM, NH 2005-2016 POSITION LISTING

<i>POSITION TITLE</i>	<i>2005 # OF POSITIONS</i>	<i>2006 # OF POSITIONS</i>	<i>2007 # OF POSITIONS</i>	<i>2008 # OF POSITIONS</i>	<i>2009 # OF POSITIONS</i>	<i>2010 # OF POSITIONS</i>	<i>2011 # OF POSITIONS</i>	<i>2012 # OF POSITIONS</i>	<i>2013 # OF POSITIONS</i>	<i>2014 # OF POSITIONS</i>	<i>2015 # OF POSITIONS</i>	<i>2016 # OF POSITIONS</i>
FIRE DEPARTMENT												
FIRE CHIEF	1.00	1.00	1.00	1.00	1.00	1.00	1.00	1.00	1.00	1.00	1.00	1.00
ASSISTANT FIRE CHIEF	1.00	1.00	0.00	0.00	0.00	1.00	1.00	1.00	1.00	1.00	1.00	1.00
DEPUTY FIRE CHIEF	0.00	0.00	0.00	0.00	0.00	1.00	1.00	1.00	1.00	1.00	1.00	1.00
DIVISION CHIEF OF OPERATIONS	0.00	0.00	1.00	1.00	1.00	0.00	0.00	0.00	0.00	0.00	0.00	0.00
DIVISION CHIEF OF PREVENTION AND SAFETY	0.00	0.00	1.00	1.00	1.00	0.00	0.00	0.00	0.00	0.00	0.00	0.00
ADMINISTRATIVE ASSISTANT	1.00	1.00	1.00	1.00	1.00	1.00	1.00	1.00	1.80	1.80	1.80	1.80
CAPTAIN	5.00	4.00	4.00	4.00	4.00	4.00	4.00	4.00	4.00	4.00	4.00	4.00
FIREFIGHTER	16.00	16.00	16.00	16.00	16.00	16.00	16.00	16.00	16.00	16.00	16.00	16.00
FIRE INSPECTOR	1.00	1.00	1.00	1.00	1.00	1.00	1.00	1.00	2.00	2.00	2.00	2.00
FIRE MARSHAL	1.00	1.00	0.00	0.00	0.00	0.00	0.00	0.00	0.00	0.00	0.00	0.00
TOTAL FIRE DEPARTMENT PERSONNEL	26.00	25.00	25.00	25.00	25.00	25.00	25.00	25.00	26.80	26.80	26.80	26.80
PUBLIC WORKS DEPARTMENT												
PUBLIC WORKS DIRECTOR	1.00	1.00	1.00	1.00	1.00	1.00	1.00	1.00	1.00	1.00	1.00	1.00
ENGINEER	1.00	1.00	1.00	1.00	1.00	2.00	2.00	2.00	2.00	2.00	2.00	1.00
ASST. TO THE PW DIRECTOR (OFFICE MANAGER)	1.00	1.00	1.00	1.00	1.00	1.00	1.00	1.00	1.00	1.00	1.00	1.00
OFFICE ASSISTANT	0.00	0.00	0.00	0.00	0.00	0.00	0.00	0.00	0.00	0.50	0.50	0.50
ASST. DIRECTOR OF OPERATIONS	1.00	1.00	1.00	1.00	1.00	1.00	1.00	1.00	1.00	1.00	1.00	1.00
HIGHWAY FOREMAN	1.00	1.00	1.00	1.00	1.00	1.00	1.00	1.00	1.00	1.00	1.00	1.00
HIGHWAY MAINTENANCE WORKER IV	1.00	1.00	1.00	1.00	1.00	1.00	1.00	1.00	1.00	1.00	1.00	1.00
HIGHWAY MAINTENANCE WORKER III	1.00	1.00	1.00	1.00	1.00	1.00	1.00	1.00	1.00	1.00	1.00	1.00
HIGHWAY MAINTENANCE WORKER II	0.00	0.00	0.00	0.00	0.00	0.00	0.00	0.00	0.00	0.00	0.00	0.00
TRADESMAN	1.00	1.00	1.00	1.00	1.00	1.00	1.00	1.00	1.00	1.00	1.00	1.00
ASST. TRADESMAN	0.40	0.40	0.40	0.40	0.40	0.40	0.40	0.40	0.40	0.40	0.40	0.40
BUILDINGS & GROUNDS FOREMAN	1.00	1.00	1.00	1.00	1.00	1.00	1.00	1.00	1.00	1.00	1.00	1.00
BUILDINGS & GROUNDS MAINTENANCE WORKER IV	1.00	1.00	1.00	1.00	1.00	1.00	1.00	1.00	1.00	1.00	1.00	1.00
BUILDINGS & GROUNDS MAINTENANCE WORKER III	1.00	1.00	1.00	1.00	1.00	1.00	1.00	1.00	1.00	1.00	1.00	1.00
SANITATION MAINTENANCE WORKER IV	2.00	2.00	3.00	3.00	3.00	3.00	3.00	3.00	3.00	3.00	3.00	3.00
SANITATION MAINTENANCE WORKER III	1.00	1.00	1.00	1.00	1.00	1.00	1.00	1.00	1.00	1.00	1.00	1.00
SANITATION MAINTENANCE WORKER II	1.00	1.00	0.00	0.00	0.00	0.00	0.00	0.00	0.00	0.00	0.00	0.00
SANITATION MAINTENANCE WORKER	0.50	0.50	0.50	0.50	0.50	0.50	0.50	0.50	0.50	0.50	0.50	0.50
WATER DIVISION												
WATER TRADESMAN	1.00	1.00	1.00	1.00	1.00	1.00	1.00	1.00	1.00	1.00	1.00	1.00
WATER MAINTENANCE WORKER IV	0.00	0.00	0.00	0.00	0.00	0.00	0.00	0.00	0.00	0.00	0.00	0.00
WASTEWATER DIVISION												
SUPT. OF WASTEWATER	1.00	1.00	1.00	1.00	1.00	1.00	1.00	1.00	1.00	1.00	1.00	1.00
WASTEWATER LAB TECHNICIAN	1.00	1.00	1.00	1.00	1.00	1.00	1.00	1.00	1.00	1.00	1.00	1.00
WASTEWATER MAINTENANCE WORKER V	1.00	1.00	1.00	1.00	1.00	1.00	1.00	1.00	1.00	1.00	1.00	1.00
WASTEWATER MAINTENANCE WORKER IV	1.00	1.00	1.00	1.00	1.00	1.00	1.00	1.00	1.00	1.00	1.00	1.00
WASTEWATER TRADESMAN (MAINTENANCE WORKER III)	1.00	1.00	1.00	1.00	1.00	1.00	1.00	1.00	1.00	1.00	1.00	1.00
WASTEWATER MAINTENANCE WORKER II	0.00	0.00	0.00	0.00	0.00	0.00	0.00	0.00	0.00	0.00	0.00	0.00
TOTAL PUBLIC WORKS DEPARTMENT PERSONNEL	21.90	21.90	21.90	21.90	21.90	22.90	22.90	22.90	22.90	23.40	23.40	22.40

TOWN OF DURHAM, NH 2005-2016 POSITION LISTING

POSITION TITLE	2005 # OF POSITIONS	2006 # OF POSITIONS	2007 # OF POSITIONS	2008 # OF POSITIONS	2009 # OF POSITIONS	2010 # OF POSITIONS	2011 # OF POSITIONS	2012 # OF POSITIONS	2013 # OF POSITIONS	2014 # OF POSITIONS	2015 # OF POSITIONS	2016 # OF POSITIONS
LIBRARY												
DIRECTOR	1.00	1.00	1.00	1.00	1.00	1.00	1.00	1.00	1.00	1.00	1.00	1.00
ASSISTANT DIRECTOR	0.00	0.38	0.38	0.38	0.50	0.63	0.63	0.63	0.83	0.88	0.88	0.88
CHILDREN'S AND YOUNG ADULT LIBRARIAN	0.50	0.50	0.50	0.50	0.50	0.63	0.63	0.83	0.83	0.88	0.88	0.88
LIBRARY ASSISTANTS	1.00	0.75	0.75	0.95	1.48	1.48	1.48	1.48	2.25	2.55	2.55	2.55
TOTAL LIBRARY PERSONNEL	2.50	2.63	2.63	2.83	3.48	3.73	3.73	3.93	4.90	5.30	5.30	5.30
TOTAL NUMBER OF TOWN POSITIONS	85.25	85.13	85.13	85.33	84.98	86.73	87.23	86.18	92.10	96.50	96.50	94.50

	(0.12)	0.00	0.20	(0.35)	1.75	0.50	(1.05)	5.93	4.40		(2.00)
	MIS +0.75		Library +0.20	Police (-1.00)	Assessor (-1.00)	Economic +0.50	Economic (-0.50)	P&R +0.25	P&R +0.40		Bldg Insp (-1.0)
	Fire (-1.00)			Library +0.65	Recreation +0.50		Recreation +.25	Police +1.00	Bldg Insp +1.0		Engineer (-1.0)
	Library +.13				Engineer +1.00		Police (-1.00)	Fire +1.80	Police +1.50		
					Police +1.00		Library +0.20	DCAT +0.50	DPW +0.50		
					Library +0.25			Assessor +1.0	Econ Dvl +0.60		
								Bldg Insp +0.40	Library +0.40		
								Library +0.97			

TITLES LISTED IN () ARE PREVIOUS TITLES

IN ADDITION THE TOWN OF DURHAM HAS THE FOLLOWING SEASONAL/TEMPORARY/WORK STUDY POSITIONS

- PLANNING DEPARTMENT - OFFICE ASSISTANT (WORK STUDY WHEN AVAILABLE)
- POLICE DEPARTMENT - OFFICE ASSISTANT (WORK STUDY WHEN AVAILABLE)
- FIRE DEPARTMENT - OFFICE ASSISTANT (WORK STUDY WHEN AVAILABLE)
- FIRE DEPARTMENT - 13 CALL FIREFIGHTERS
- PUBLIC WORKS DEPARTMENT - 4-6 SEASONAL LABORERS
- LIBRARY DEPARTMENT - WORK STUDY